

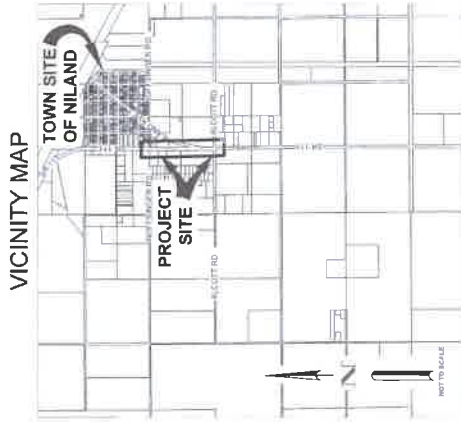
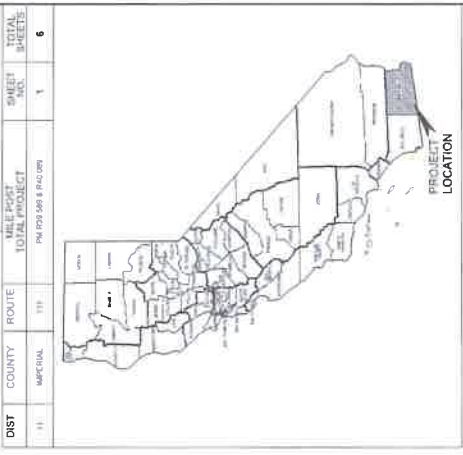
SHEET INDEX

- TITLE SHEET
- HIGHWAY 111 - SANITARY SEWER PIPELINE AND MANHOLE IMPROVEMENT PLAN - STA 364+10 TO STA 375+62
- HIGHWAY 111 AND ALCOY ROAD SANITARY SEWER PIPELINE PLAN AND PROFILE - STA 364+10 TO STA 349+35
- HIGHWAY 111 AND MORFISSENGER ROAD SANITARY SEWER PIPELINE PLAN AND PROFILE - STA 372+18 TO STA 374+50
- SANITARY SEWER SECTIONS AND DETAILS
- HIGHWAY 111 TRAFFIC CONTROL PLAN

STATE OF CALIFORNIA DEPARTMENT OF TRANSPORTATION PROJECT PLANS FOR CONSTRUCTION ON STATE ROUTE

IN IMPERIAL COUNTY ON SR 111 COUNTY OF IMPERIAL - NILAND WASTE WATER TREATMENT PLANT AND COLLECTION SYSTEM IMPROVEMENTS

| DIST | COUNTY | ROUTE | ROUTE | MILE POST | SHEET | DATE |
|------|----------|-------|-------|------------------------|-------|------|
| 11 | IMPERIAL | 111 | 111 | FM 059 589 E 814 C 079 | 1 | 6 |



ABBREVIATIONS

| | |
|-------|---------------------------|
| AC | ASPHALT CONCRETE |
| BC | BUILDING |
| CD | CLEARCUT |
| CB | CLASS BASE |
| DB | DIAMETER |
| DD | DOUBLE CLEANOUT |
| DW | DRIVEWAY |
| A | ANGLE |
| E | ELEVATION |
| EL | ELEVATION |
| E.C | END OF CURVE RADIUS |
| FF | FINISH FLOOR ELEVATION |
| FP | FINISH POINT |
| L | LENGTH |
| BR | BROADWAY |
| L | LENGTH |
| MAX | MAXIMUM |
| MIN | MINIMUM |
| NSC | NON-CIRCULAR |
| NS | NOT TO SCALE |
| N.T.S | NOT TO SCALE |
| O.C | ON CENTER |
| ONE | ONE |
| P.E | PERMANENT ELECTRICAL LINE |
| P.C.C | PORTLAND CEMENT CONCRETE |
| P.C | PORTLAND CEMENT CONCRETE |
| P.P | POWER POLE |
| P.V.C | POLY VINYL CHLORIDE |
| R | RADIUS |
| R.C.P | REINFORCED CONCRETE PIPE |
| RE | RESIDENT ENGINEER |
| R.W | RIGHT OF WAY |
| S | SEWER |
| S.B.M | STANDARD BENCH MARK |
| T.C | TEMPORARY EMBANKMENT |
| T.P | TOP OF PAVEMENT |
| W | WEST / WATER |

CONSTRUCTION SYMBOLS

| ITEM | DESCRIPTION | SYMBOL |
|------|------------------------|----------|
| 1 | EXISTING A.C. PAVEMENT | [Symbol] |
| 2 | NEW TRUCKING/PAVEMENT | [Symbol] |
| 3 | EXISTING MANHOLE | [Symbol] |
| 4 | NEW MANHOLE | [Symbol] |
| 5 | NEW MANHOLE | [Symbol] |
| 6 | NEW MANHOLE | [Symbol] |
| 7 | NEW MANHOLE | [Symbol] |
| 8 | NEW MANHOLE | [Symbol] |
| 9 | NEW MANHOLE | [Symbol] |
| 10 | NEW MANHOLE | [Symbol] |
| 11 | NEW MANHOLE | [Symbol] |
| 12 | NEW MANHOLE | [Symbol] |
| 13 | NEW MANHOLE | [Symbol] |
| 14 | NEW MANHOLE | [Symbol] |
| 15 | NEW MANHOLE | [Symbol] |
| 16 | NEW MANHOLE | [Symbol] |
| 17 | NEW MANHOLE | [Symbol] |
| 18 | NEW MANHOLE | [Symbol] |
| 19 | NEW MANHOLE | [Symbol] |
| 20 | NEW MANHOLE | [Symbol] |
| 21 | NEW MANHOLE | [Symbol] |
| 22 | NEW MANHOLE | [Symbol] |
| 23 | NEW MANHOLE | [Symbol] |
| 24 | NEW MANHOLE | [Symbol] |
| 25 | NEW MANHOLE | [Symbol] |
| 26 | NEW MANHOLE | [Symbol] |
| 27 | NEW MANHOLE | [Symbol] |
| 28 | NEW MANHOLE | [Symbol] |
| 29 | NEW MANHOLE | [Symbol] |
| 30 | NEW MANHOLE | [Symbol] |
| 31 | NEW MANHOLE | [Symbol] |
| 32 | NEW MANHOLE | [Symbol] |
| 33 | NEW MANHOLE | [Symbol] |
| 34 | NEW MANHOLE | [Symbol] |
| 35 | NEW MANHOLE | [Symbol] |
| 36 | NEW MANHOLE | [Symbol] |
| 37 | NEW MANHOLE | [Symbol] |
| 38 | NEW MANHOLE | [Symbol] |
| 39 | NEW MANHOLE | [Symbol] |
| 40 | NEW MANHOLE | [Symbol] |
| 41 | NEW MANHOLE | [Symbol] |
| 42 | NEW MANHOLE | [Symbol] |
| 43 | NEW MANHOLE | [Symbol] |
| 44 | NEW MANHOLE | [Symbol] |
| 45 | NEW MANHOLE | [Symbol] |
| 46 | NEW MANHOLE | [Symbol] |
| 47 | NEW MANHOLE | [Symbol] |
| 48 | NEW MANHOLE | [Symbol] |
| 49 | NEW MANHOLE | [Symbol] |
| 50 | NEW MANHOLE | [Symbol] |

BENCH MARK

UNDERGROUND SERVICE ALERT
Call: TOLL FREE 811

811
Call Before You Dig

TWO WORKING DAYS BEFORE DIGGING

APPROVED FOR THE COUNTY OF IMPERIAL

DATE: 09/25/2023

BY: [Signature]

FOR: [Signature]

SUPERVISOR OF PUBLIC WORKS

PLANS APPROVAL DATE: 09/25/2023

DATE: 09/25/2023

PROJECT: COUNTY OF IMPERIAL - NILAND WASTE WATER TREATMENT PLANT AND COLLECTION SYSTEM IMPROVEMENTS

IMPERIAL COUNTY PUBLIC WORKS

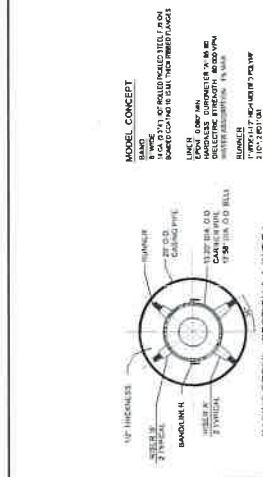
154 S 11TH ST
EL CENTRO, CA 92543

THE HOLD GROUP, INC.
151 NORTH IMPERIAL AVENUE
EL CENTRO, CA 92543

CONTRACT NO.

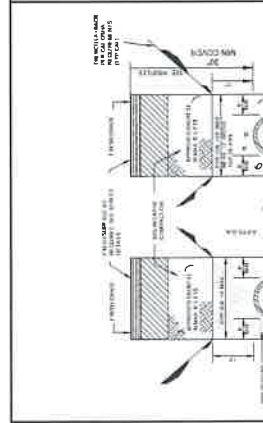
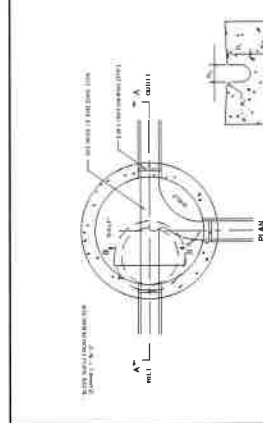
TITLE SHEET

| | |
|-------------------------------|----------------|
| PROJECT NUMBER: 11 | DATE: 05/11/11 |
| CONTRACT NUMBER: 111 | DATE: 05/11/11 |
| COUNTY: 111 | DATE: 05/11/11 |
| CITY: 111 | DATE: 05/11/11 |
| PROJECT ENGINEER: [Signature] | DATE: 05/11/11 |
| CHECKED BY: [Signature] | DATE: 05/11/11 |
| DESIGNED BY: [Signature] | DATE: 05/11/11 |
| DATE: 05/11/11 | DATE: 05/11/11 |

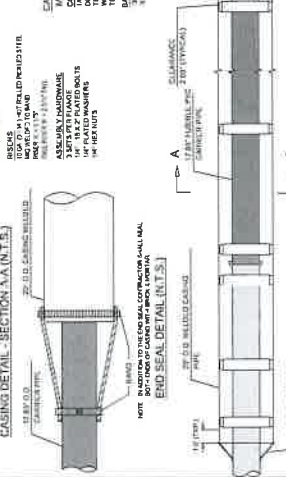
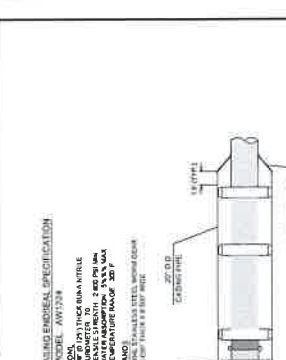


MODEL CONCEPT

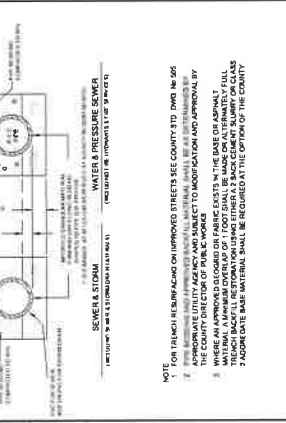
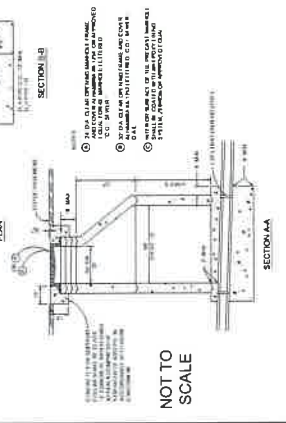
MANHOLE SHALL BE CONSTRUCTED WITH 1500 PSI CONCRETE. THE MANHOLE SHALL BE CONSTRUCTED WITH 1500 PSI CONCRETE. THE MANHOLE SHALL BE CONSTRUCTED WITH 1500 PSI CONCRETE.



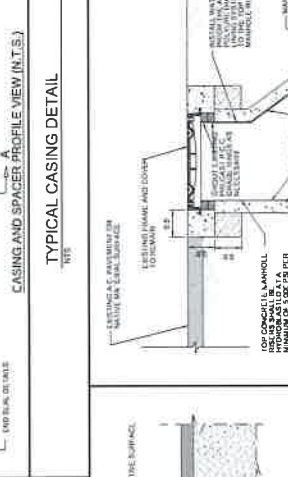
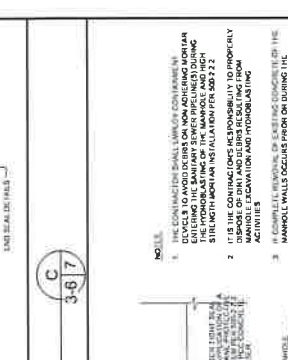
TRENCH DETAIL
NOT TO SCALE



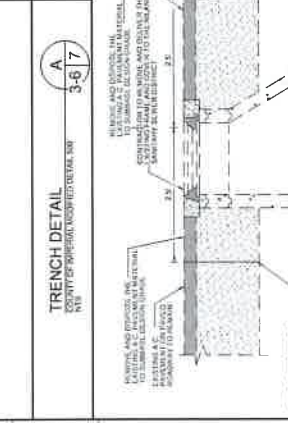
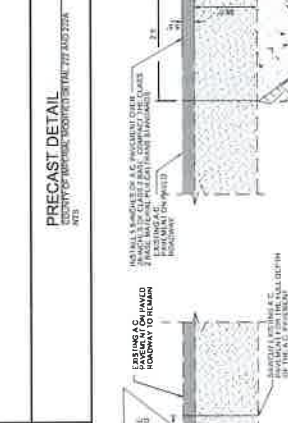
TYPICAL CASING DETAIL
NOT TO SCALE



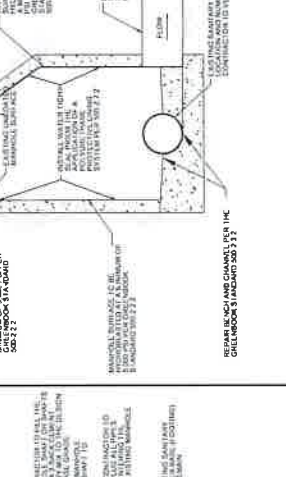
SANITARY SEWER MANHOLE ABANDONMENT ON CALTRANS A.C. PAVED AREAS DETAIL
SECTION



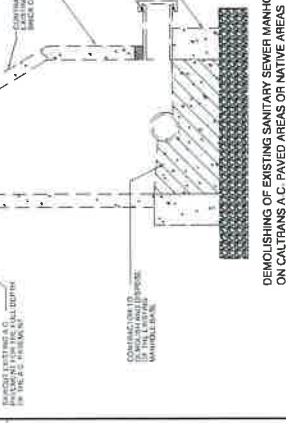
SANITARY SEWER MANHOLE ABANDONMENT ON CALTRANS A.C. PAVED AREAS DETAIL
SECTION



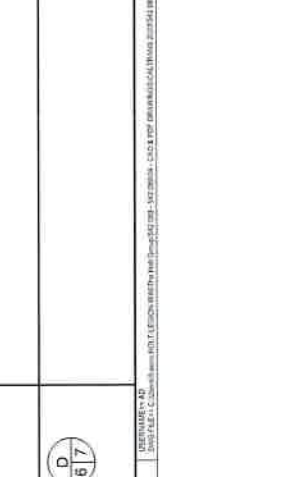
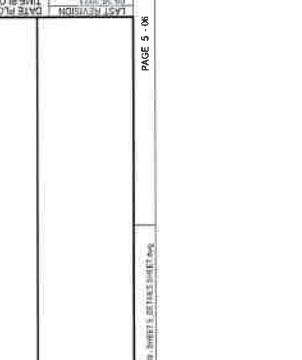
SANITARY SEWER MANHOLE ABANDONMENT ON CALTRANS A.C. PAVED AREAS DETAIL
SECTION



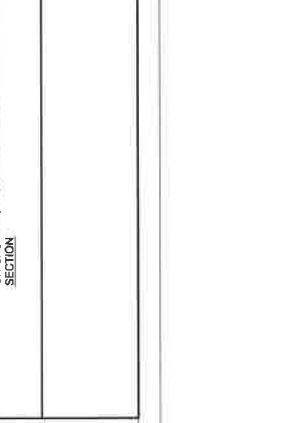
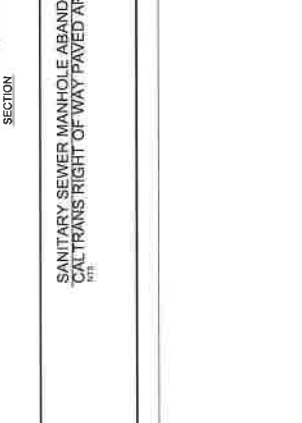
SANITARY SEWER MANHOLE ABANDONMENT ON CALTRANS A.C. PAVED AREAS DETAIL
SECTION



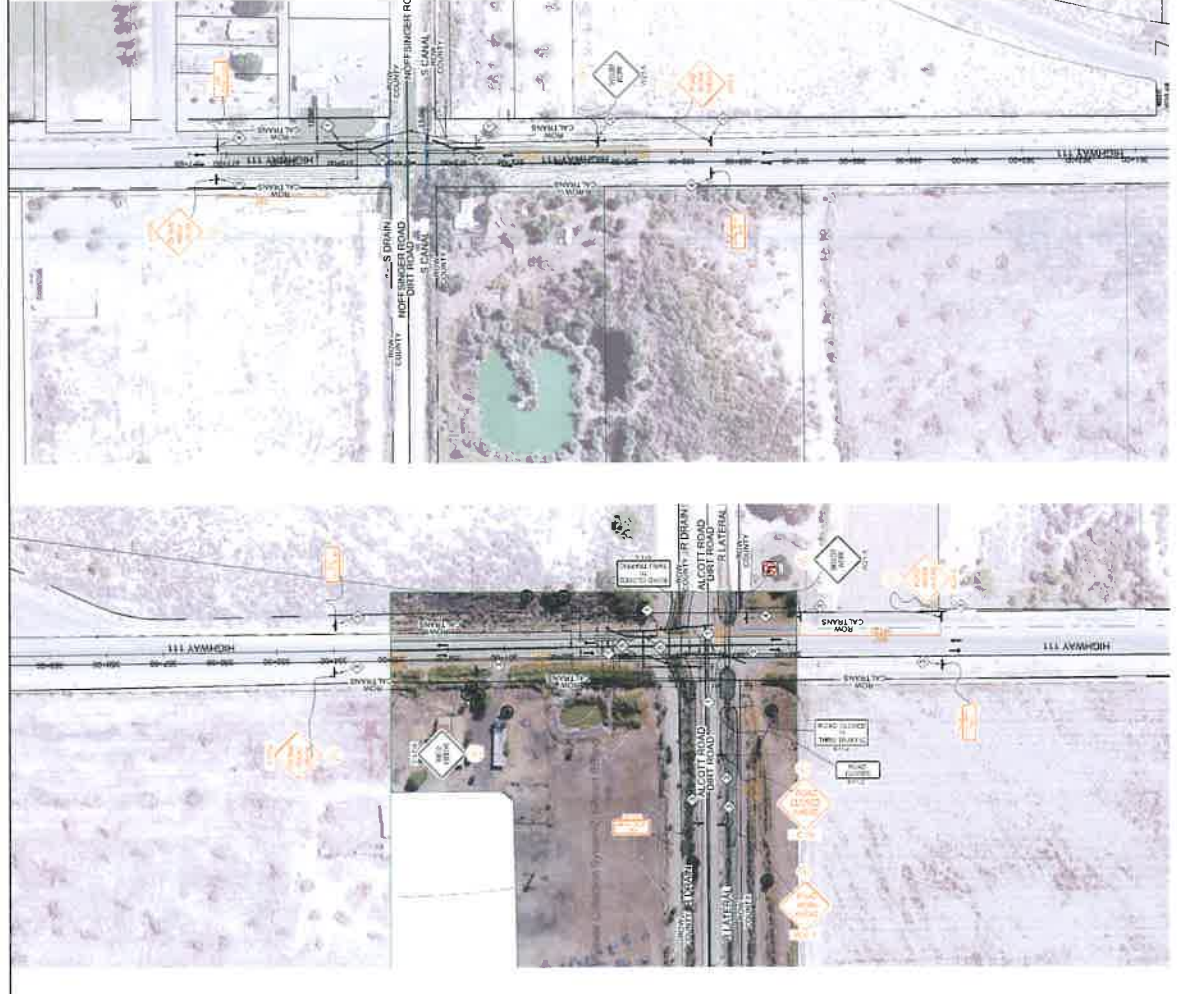
SANITARY SEWER MANHOLE ABANDONMENT ON CALTRANS A.C. PAVED AREAS DETAIL
SECTION



SANITARY SEWER MANHOLE ABANDONMENT ON CALTRANS A.C. PAVED AREAS DETAIL
SECTION



SANITARY SEWER MANHOLE ABANDONMENT ON CALTRANS A.C. PAVED AREAS DETAIL
SECTION



SR111 AN ALCOTT ROAD INTERSECTION

SR111 AN HOFFSINGER ROAD INTERSECTION

TRAFFIC CONTROL LEGEND

| ITEM NO. | DESCRIPTION | ITEM |
|----------|---------------------------------|------|
| 1 | CHANGELINE STRIPE | |
| 2 | DIRECTIONAL STRIPE | |
| 3 | TYPE II BARRIAGE | |
| 4 | WARNING REGULATORY SIGN | |
| 5 | WORK AREA | |
| 6 | RAIL | |
| 7 | RAIL AS ILLUSTRATED ON THE PLAN | |

NOTE: THE CONTRACTOR SHALL MAINTAIN THE INGRESS AND EGRESS OF THE RESIDENTIAL AND BUSINESS ACCESS AT ALL TIMES DURING THE CONSTRUCTION ACTIVITIES. THE CONTRACTOR SHALL PROVIDE TEMPORARY ACCESS RAMP(S) OR TRAVEL WAYS, IF NECESSARY.

TRAFFIC CONTROL NOTES

1. INSTALL TYPE II BARRIAGE
2. INSTALL REFLECTIVE TRAFFIC CONE DELIMITERS AT THE BEGINNING AND END OF THE WORK ZONE
3. INSTALL WARNING REGULATORY SIGN WITH WARNING LIGHT AS ILLUSTRATED ON THE PLAN
4. SET THE WARNING REGULATORY SIGN AS ILLUSTRATED ON THE PLAN
5. INSTALL A RAIL AS ILLUSTRATED ON THE PLAN

NOTE: THE CONTRACTOR SHALL MAINTAIN THE INGRESS AND EGRESS OF THE RESIDENTIAL AND BUSINESS ACCESS AT ALL TIMES DURING THE CONSTRUCTION ACTIVITIES. THE CONTRACTOR SHALL PROVIDE TEMPORARY ACCESS RAMP(S) OR TRAVEL WAYS, IF NECESSARY.



| | | | |
|--|--|-------------------------|--|
| PROJECT NUMBER: 11-232 | | DATE: 09-25-2023 | |
| OWNER: THE COUNTY OF CALIFORNIA | | PROJECT: SR111 | |
| DESIGNER: HOK | | SCALE: AS SHOWN | |
| PROJECT LOCATION: SR111, ALCOTT ROAD, S. DRAIN, HOFFSINGER ROAD, S. CANAL, S. COUNTY | | SHEET: 6 | |
| PROJECT LOCATION: SR111, ALCOTT ROAD, S. DRAIN, HOFFSINGER ROAD, S. CANAL, S. COUNTY | | DATE: 09-25-2023 | |
| PROJECT LOCATION: SR111, ALCOTT ROAD, S. DRAIN, HOFFSINGER ROAD, S. CANAL, S. COUNTY | | DRAWN BY: [Signature] | |
| PROJECT LOCATION: SR111, ALCOTT ROAD, S. DRAIN, HOFFSINGER ROAD, S. CANAL, S. COUNTY | | CHECKED BY: [Signature] | |
| PROJECT LOCATION: SR111, ALCOTT ROAD, S. DRAIN, HOFFSINGER ROAD, S. CANAL, S. COUNTY | | DATE: 09-25-2023 | |

GENERAL TRAFFIC CONTROL NOTES:

1. ALL WORK SHALL BE CONDUCTED IN ACCORDANCE WITH THE LATEST EDITION OF THE CALIFORNIA MUTUAL AID AND MUTED CALIFORNIA SUPPLEMENT.
2. THE CONTRACTOR SHALL MAINTAIN THE MINIMUM REQUIRED MINIMUM TRAFFIC CONTROL ZONE TO ALLOW THE PUBLIC TO SAFELY AND LEGALLY TRAVEL THROUGH THE WORK ZONE. THE CONTRACTOR SHALL MAINTAIN THE MINIMUM TRAFFIC CONTROL ZONE TO ALLOW THE PUBLIC TO SAFELY AND LEGALLY TRAVEL THROUGH THE WORK ZONE. THE CONTRACTOR SHALL MAINTAIN THE MINIMUM TRAFFIC CONTROL ZONE TO ALLOW THE PUBLIC TO SAFELY AND LEGALLY TRAVEL THROUGH THE WORK ZONE.
3. TRAFFIC CONTROL DEVICES SHOWN ON PLANS ARE LOCATED APPROXIMATELY AND SHALL BE PLACED IN ACCORDANCE WITH THE LATEST EDITION OF MUTED CALIFORNIA SUPPLEMENT AND MUTED CALIFORNIA SUPPLEMENT.
4. THROUGHOUT EACH WORK PERIOD, CONTRACTORS SHALL MAINTAIN TRAFFIC CONTROL DEVICES AND DEVIATIONS TO MAINTAIN SAFE IN ACCORDANCE WITH TRAFFIC CONTROL DEVICES AND DEVIATIONS TO MAINTAIN SAFE IN ACCORDANCE WITH TRAFFIC CONTROL DEVICES AND DEVIATIONS TO MAINTAIN SAFE IN ACCORDANCE WITH TRAFFIC CONTROL DEVICES AND DEVIATIONS TO MAINTAIN SAFE.
5. CONTRACTORS SHALL MAINTAIN A MINIMUM 12 FEET TRAFFIC LANE WIDTH AT ALL TIMES. THERE SHALL BE A MINIMUM 2 FEET BETWEEN THE EDGE OF CUT AND THE NEAREST TRAFFIC LANE.
6. ACCESS TO PRIVATE PROPERTY SHALL BE MAINTAINED AT ALL TIMES.
7. REFLECTIVE FLASHING LIGHTS AND OR OTHER TRAFFIC DEVICES (17) SHALL BE PLACED ON ALL DETOUR AND HOV 1 AND ROAD CLOSED AND HOV 2 SIGNS.
8. CONTRACTORS SHALL MAINTAIN TRAFFIC CONTROL DEVICES AND DEVIATIONS TO MAINTAIN SAFE IN ACCORDANCE WITH TRAFFIC CONTROL DEVICES AND DEVIATIONS TO MAINTAIN SAFE IN ACCORDANCE WITH TRAFFIC CONTROL DEVICES AND DEVIATIONS TO MAINTAIN SAFE.
9. REFER TO THE LATEST EDITION OF CALIFORNIA MUTED AID AND MUTED CALIFORNIA SUPPLEMENT FOR THE LATEST EDITION OF CALIFORNIA MUTED AID AND MUTED CALIFORNIA SUPPLEMENT.
10. CONTRACTORS SHALL INSPECT TRAFFIC CONTROL AT THE BEGINNING AND AT THE END OF EACH WORKING DAY TO ENSURE COMPLIANCE WITH THESE PLANS AND PROJECT SPECIFICATIONS.
11. ALL TRAFFIC CONTROL DEVICES AND DEVIATIONS TO MAINTAIN SAFE IN ACCORDANCE WITH TRAFFIC CONTROL DEVICES AND DEVIATIONS TO MAINTAIN SAFE IN ACCORDANCE WITH TRAFFIC CONTROL DEVICES AND DEVIATIONS TO MAINTAIN SAFE.
12. CONTRACTORS SHALL MAINTAIN TRAFFIC CONTROL DEVICES AND DEVIATIONS TO MAINTAIN SAFE IN ACCORDANCE WITH TRAFFIC CONTROL DEVICES AND DEVIATIONS TO MAINTAIN SAFE IN ACCORDANCE WITH TRAFFIC CONTROL DEVICES AND DEVIATIONS TO MAINTAIN SAFE.
13. ARROWS AND STRIPING IN CONSTRUCTION ZONE SHALL BE COVERED WITH TEMPORARY STRIPING BACKOUT TAPE. THE TAPE SHALL BE REMOVED AT THE END OF THE WORK. CONSTRUCTION ZONE STRIPING SHALL BE MAINTAINED THROUGHOUT THE PROJECT.
14. THE CONTRACTOR SHALL MAINTAIN TRAFFIC CONTROL DEVICES AND DEVIATIONS TO MAINTAIN SAFE IN ACCORDANCE WITH TRAFFIC CONTROL DEVICES AND DEVIATIONS TO MAINTAIN SAFE IN ACCORDANCE WITH TRAFFIC CONTROL DEVICES AND DEVIATIONS TO MAINTAIN SAFE.
15. THE CONTRACTOR SHALL MAINTAIN TRAFFIC CONTROL DEVICES AND DEVIATIONS TO MAINTAIN SAFE IN ACCORDANCE WITH TRAFFIC CONTROL DEVICES AND DEVIATIONS TO MAINTAIN SAFE IN ACCORDANCE WITH TRAFFIC CONTROL DEVICES AND DEVIATIONS TO MAINTAIN SAFE.
16. THE CONTRACTOR SHALL MAINTAIN TRAFFIC CONTROL DEVICES AND DEVIATIONS TO MAINTAIN SAFE IN ACCORDANCE WITH TRAFFIC CONTROL DEVICES AND DEVIATIONS TO MAINTAIN SAFE IN ACCORDANCE WITH TRAFFIC CONTROL DEVICES AND DEVIATIONS TO MAINTAIN SAFE.
17. THE CONTRACTOR SHALL MAINTAIN TRAFFIC CONTROL DEVICES AND DEVIATIONS TO MAINTAIN SAFE IN ACCORDANCE WITH TRAFFIC CONTROL DEVICES AND DEVIATIONS TO MAINTAIN SAFE IN ACCORDANCE WITH TRAFFIC CONTROL DEVICES AND DEVIATIONS TO MAINTAIN SAFE.
18. THE CONTRACTOR SHALL MAINTAIN TRAFFIC CONTROL DEVICES AND DEVIATIONS TO MAINTAIN SAFE IN ACCORDANCE WITH TRAFFIC CONTROL DEVICES AND DEVIATIONS TO MAINTAIN SAFE IN ACCORDANCE WITH TRAFFIC CONTROL DEVICES AND DEVIATIONS TO MAINTAIN SAFE.
19. ALL CONSTRUCTION WORK SHALL BE CONDUCTED IN ACCORDANCE WITH THE LATEST EDITION OF CALIFORNIA MUTED AID AND MUTED CALIFORNIA SUPPLEMENT.
20. WHENEVER THE WORK CAUSES OBSTRUCTION OF PAVEMENT OR TEMPORARY OBSTRUCTION OF PAVEMENT, THE CONTRACTOR SHALL MAINTAIN TRAFFIC CONTROL DEVICES AND DEVIATIONS TO MAINTAIN SAFE IN ACCORDANCE WITH TRAFFIC CONTROL DEVICES AND DEVIATIONS TO MAINTAIN SAFE IN ACCORDANCE WITH TRAFFIC CONTROL DEVICES AND DEVIATIONS TO MAINTAIN SAFE.
21. THE CONTRACTOR SHALL MAINTAIN TRAFFIC CONTROL DEVICES AND DEVIATIONS TO MAINTAIN SAFE IN ACCORDANCE WITH TRAFFIC CONTROL DEVICES AND DEVIATIONS TO MAINTAIN SAFE IN ACCORDANCE WITH TRAFFIC CONTROL DEVICES AND DEVIATIONS TO MAINTAIN SAFE.
22. THE CONTRACTOR SHALL MAINTAIN TRAFFIC CONTROL DEVICES AND DEVIATIONS TO MAINTAIN SAFE IN ACCORDANCE WITH TRAFFIC CONTROL DEVICES AND DEVIATIONS TO MAINTAIN SAFE IN ACCORDANCE WITH TRAFFIC CONTROL DEVICES AND DEVIATIONS TO MAINTAIN SAFE.

TRAFFIC CONTROL GENERAL NOTE:

THE CONTRACTOR SHALL MAINTAIN TRAFFIC CONTROL DEVICES AND DEVIATIONS TO MAINTAIN SAFE IN ACCORDANCE WITH TRAFFIC CONTROL DEVICES AND DEVIATIONS TO MAINTAIN SAFE IN ACCORDANCE WITH TRAFFIC CONTROL DEVICES AND DEVIATIONS TO MAINTAIN SAFE.