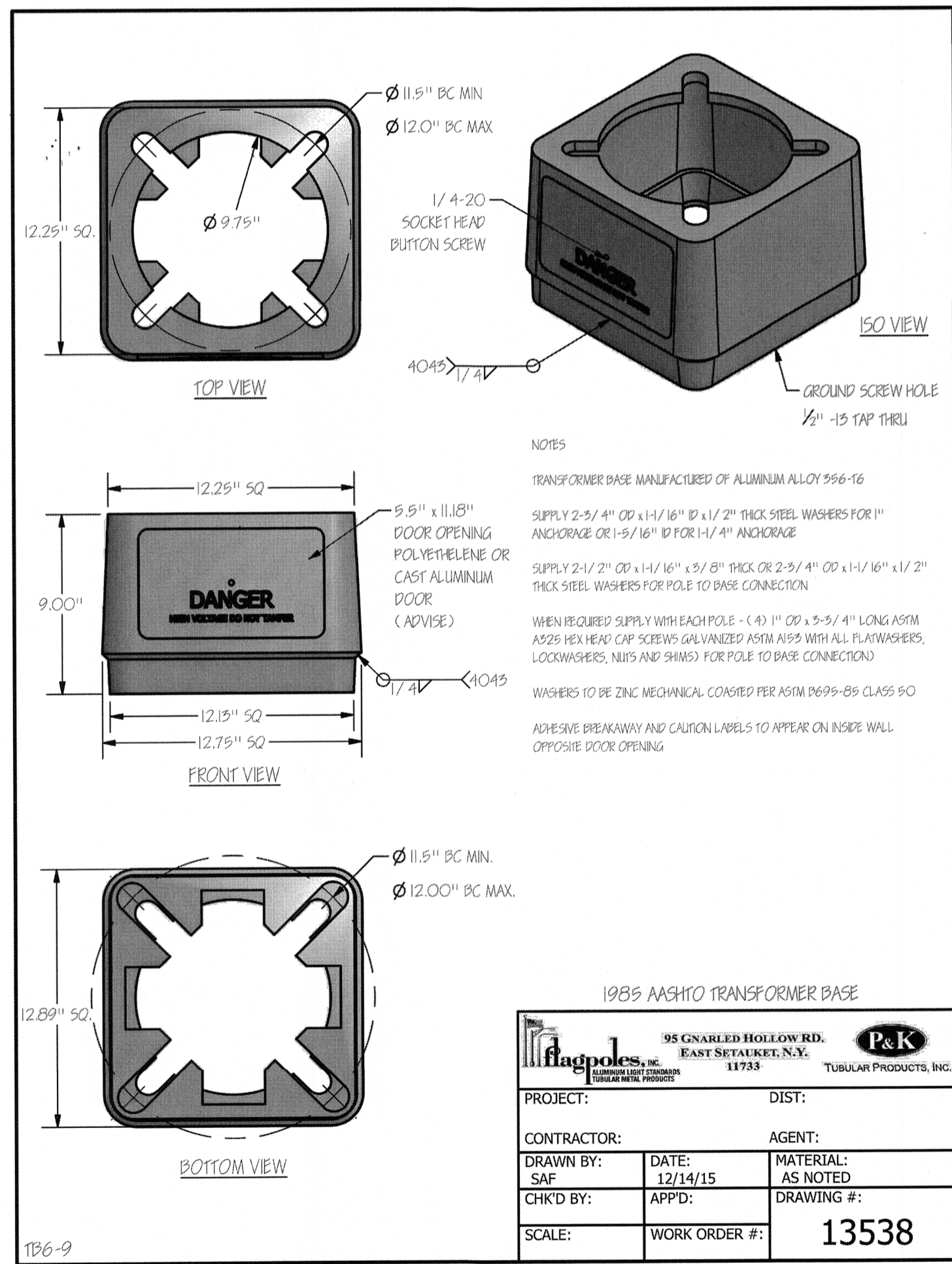
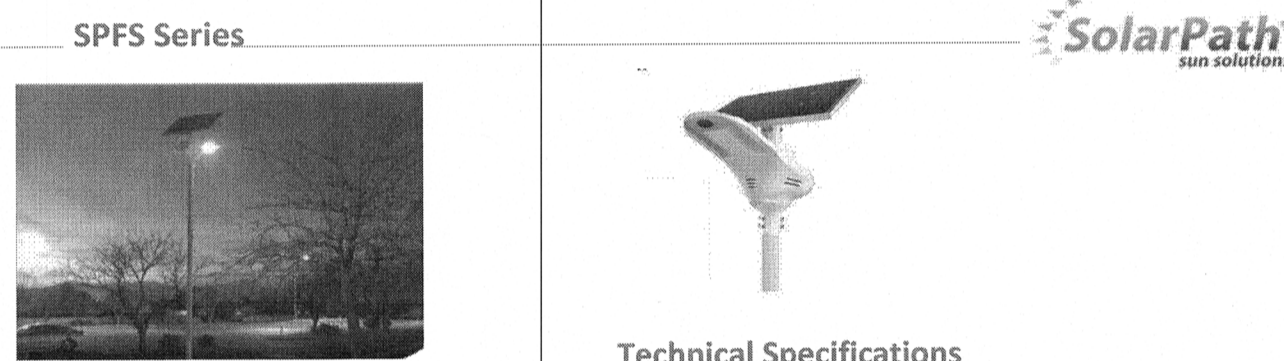


SOLAR LED PEDESTRIAN SCALE LIGHT POLE WITH BREAKAWAY BASE DETAIL
NOT TO SCALE



BREAKAWAY (TRANSFORMER) POLE BASE DETAIL
NOT TO SCALE



SPFS Series
SolarPath's well-built, modern high-end, compact all feature flagship product. All In One (integration) design solar light put all core parts and smart motion sensor in one kit, to be used for parks, streets, parking lot.

- Key features**
- Solar powered outdoor lighting
 - Lithium battery prolongs life and protects environment
 - Modular compact design, easy assembly and maintenance
 - IP66
 - Rust-proof, dustproof and waterproof

Uses and Applications Guide

Streets lighting	●
Parking lots	●
Farms	●
Boardwalks	●
Pathways	●
Public parks	●
Walking paths	●
Bus stations	●

Ordering Guide

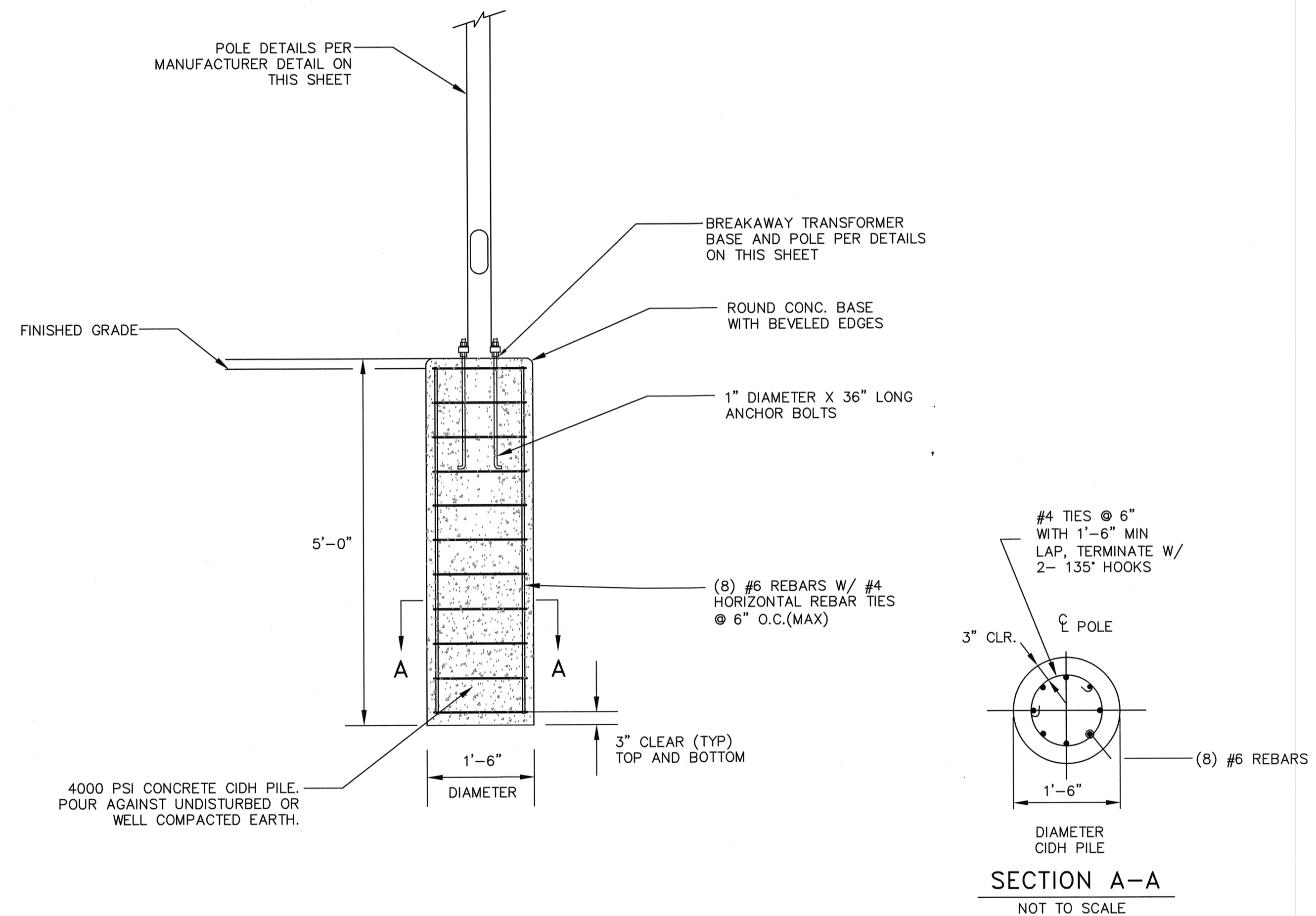
EXAMPLE: SPFS-50W-15W-2-35K-192WH-WH-01

Model	Solar Panel	Led Power	Distribution Type	Led Color Temp	Battery options	Body Color	Options
SPFS	25W	25W	2-1-Fig. #1	3000K	3500mAh	White	01 - motion sensor
	60W	25W		40K	3300mAh	White	
	70W	30W		60K	3450mAh	Black	
	80W	40W		60K	3570mAh	Black	
	100W	50W		60K	4230mAh	Black	
	120W	60W		60K	4770mAh	Black	
	150W	80W		60K	6180mAh	Black	
	200W	100W		60K	8240mAh	Black	

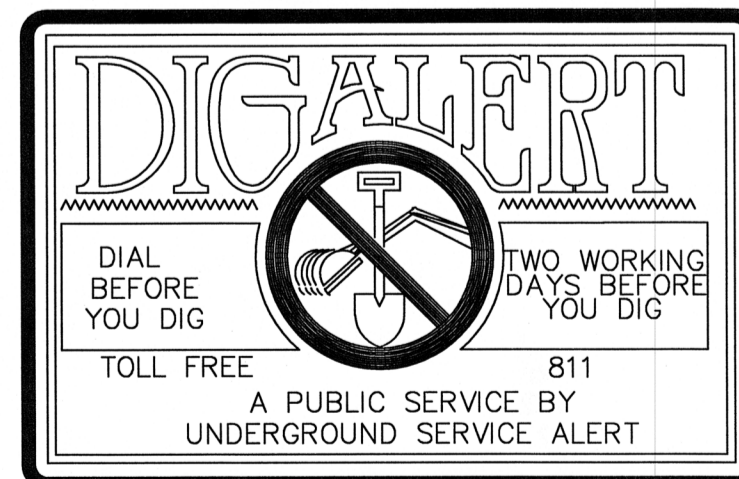
Technical Specifications

Type	High efficiency Monocrystalline Silicon
Power	Up to 200W
Adjustable Angle	150° (the horizontal direction, 270° on the vertical direction)
Solar Charge Controller	MPPT (Maximum Power Point Tracking), infrared solar charging controller
Battery	LiFePO4 (lithium-iron phosphate)
Capacity	Up to 891.2Ah
Light Source Power	Up to 100W
Lamp Rated Total Luminous Flux	Up to 18,000lm
Luminous Efficacy	1.80lm/w
CCT (Correlated Color Temperature)	3,500K-6,000K
Color Rendering Index (CRI)	>75 (2.80 optional)
LED Light Parameters	Sensor Type: Microwave Detection (By Radar)
Detector (Motion Sensor)	Detection distance: <55FT
Delay Time	10 seconds (optional)
Control Modes	1. Light control 2. Timing control 3. Microwave control 4. Timing + Microwave control
Operation profiles	1. 100%-2hr, 70%-2hr, 20%-6h dim. 2. 50%-1hr, 100%-4hr, 50%-3hr, 25%-4hr. 3. 100%-4hr, 50%-4hr. 4. Always 20% dim, motion sensor trigger jump to 100% for 2 minutes. 5. Always 20% dim, motion sensor trigger jump to 100% for 2 minutes.
Mounting Height Range	Up to 19FT
Installation Distance Range	Up to 131FT
Installation Recommendation	Pole Upper diameter: 2.36in - 2.99in
Lighting Material	Die-casting Aluminum
Expanded Application	Wireless Remote controller: GPS Integrated Management System Remote control and monitoring!
Product size	light body: Depend On LED power solar panel: Depend On Solar Panel wattage
Net weight	light body: Depend On LED power solar panel: Depend On Solar Panel Wattage

SOLAR LED PEDESTRIAN SCALE LIGHT DETAIL
NOT TO SCALE



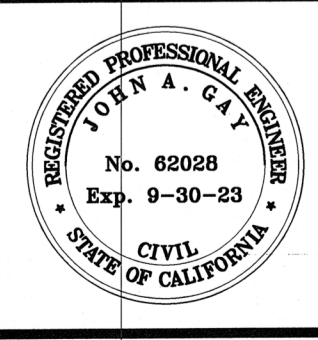
A LIGHT POLE FOUNDATION
NOT TO SCALE



REVISION	DATE	COMMENTS



PREPARED UNDER THE DIRECT SUPERVISION OF:
Nicholas J. Oleskiewicz
89464
R.C.E. No.
12/31/22
REG. EXP. DATE



COUNTY OF IMPERIAL PUBLIC WORKS DEPARTMENT
APPROVED FOR CONSTRUCTION BY:
John A. Gay
62028
R.C.E. No.
09/30/23
REG. EXP. DATE

PUBLIC WORKS DEPARTMENT
COUNTY OF IMPERIAL
EL CENTRO, CALIFORNIA

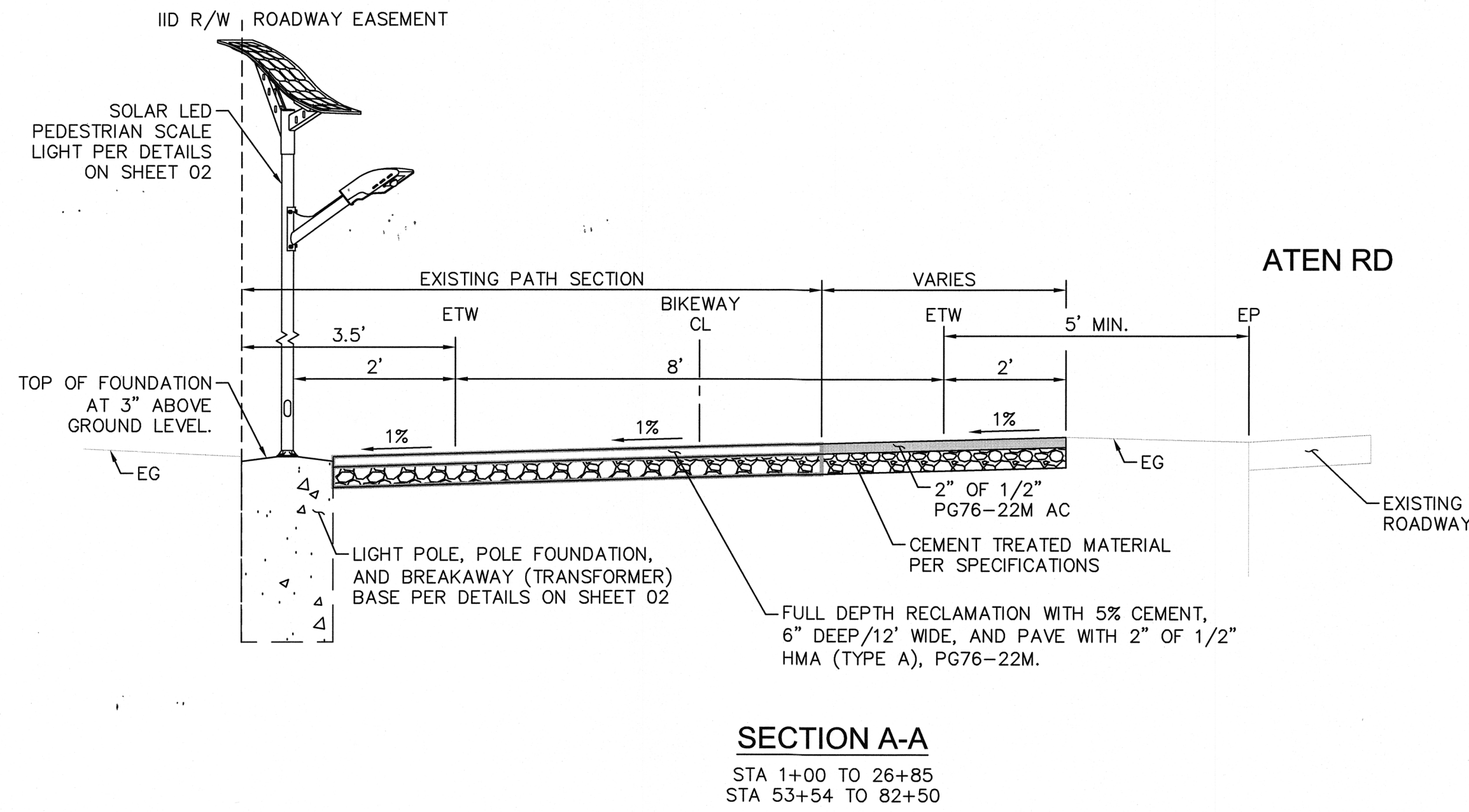
DATE: 04/28/2022
DRAWN: CR - KH
SCALE: N/A
CHECKED: RRS - KH

BICYCLE PATH IMPROVEMENTS ON ATEN ROAD FROM DOGWOOD ROAD TO IMPERIAL VALLEY COLLEGE ENTRANCE

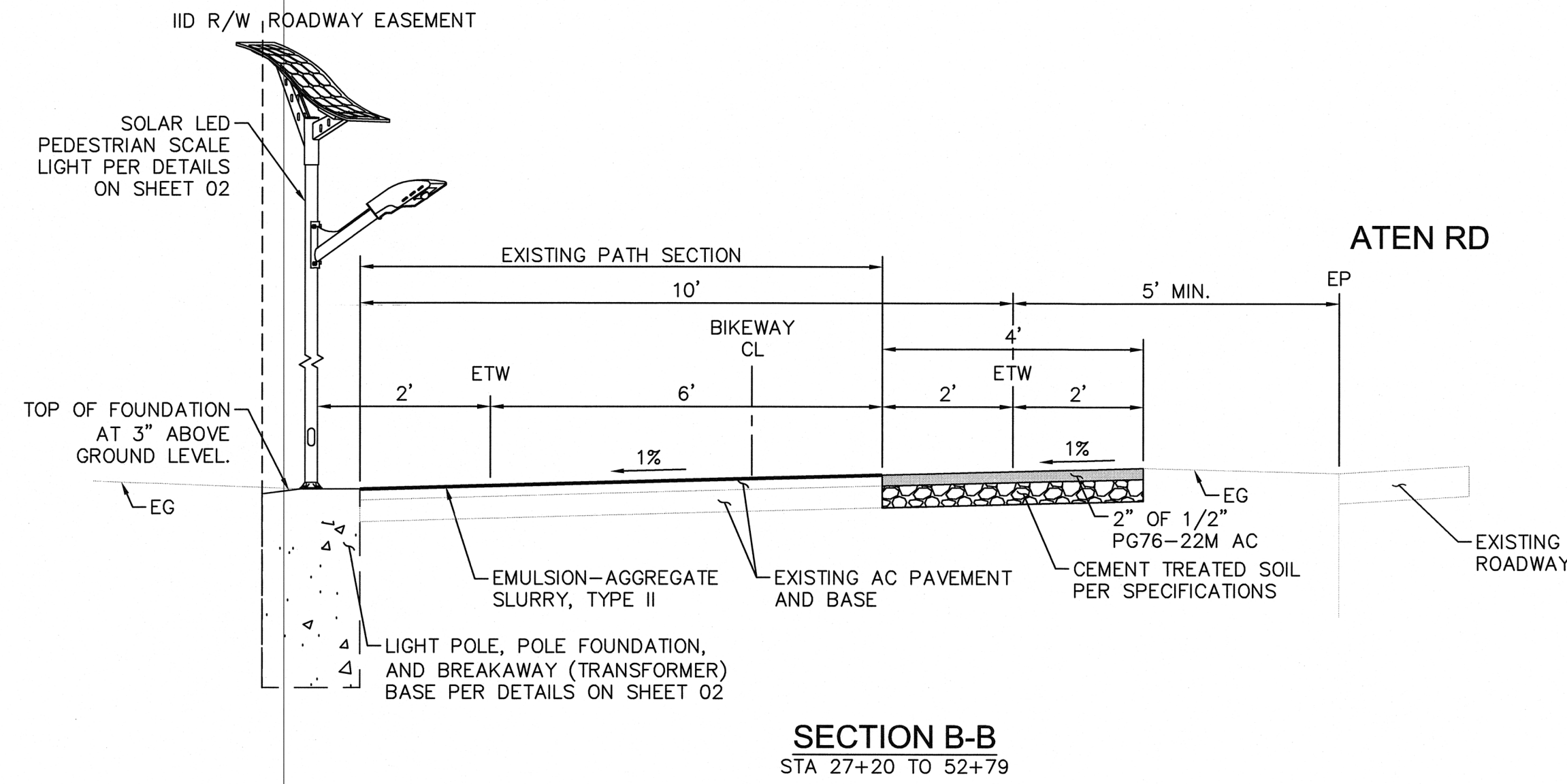
ATPL-5958(118) -- ATEN RD CLASS I BICYCLE PATH IN IMPERIAL COUNTY COUNTY PROJECT No. 6267

CONSTRUCTION DETAILS

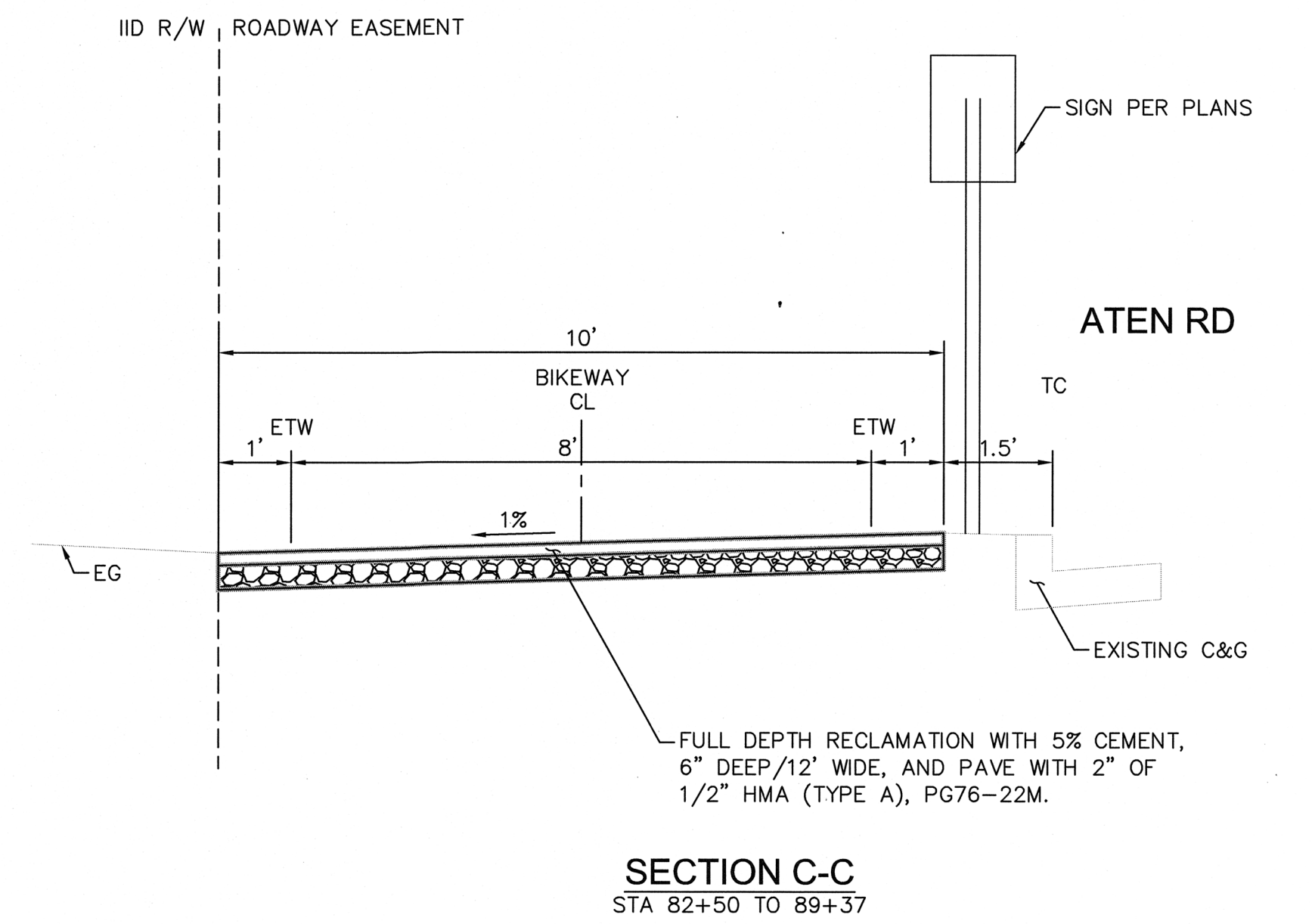
REFERENCE SHEET OF 02 OF 09



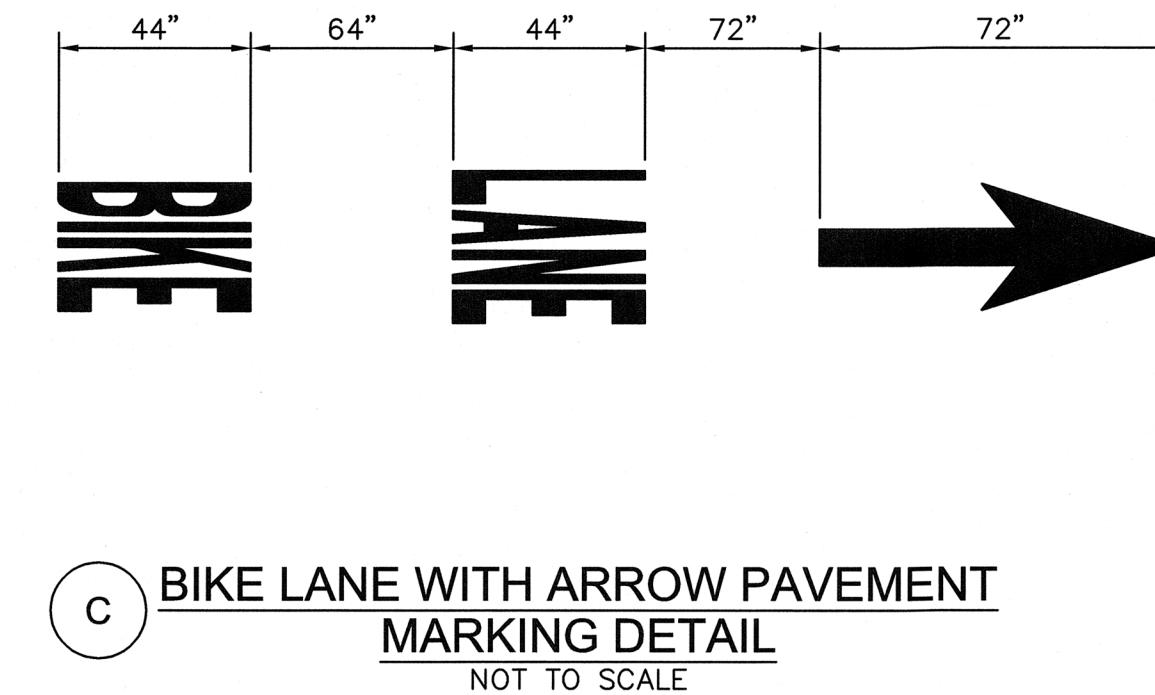
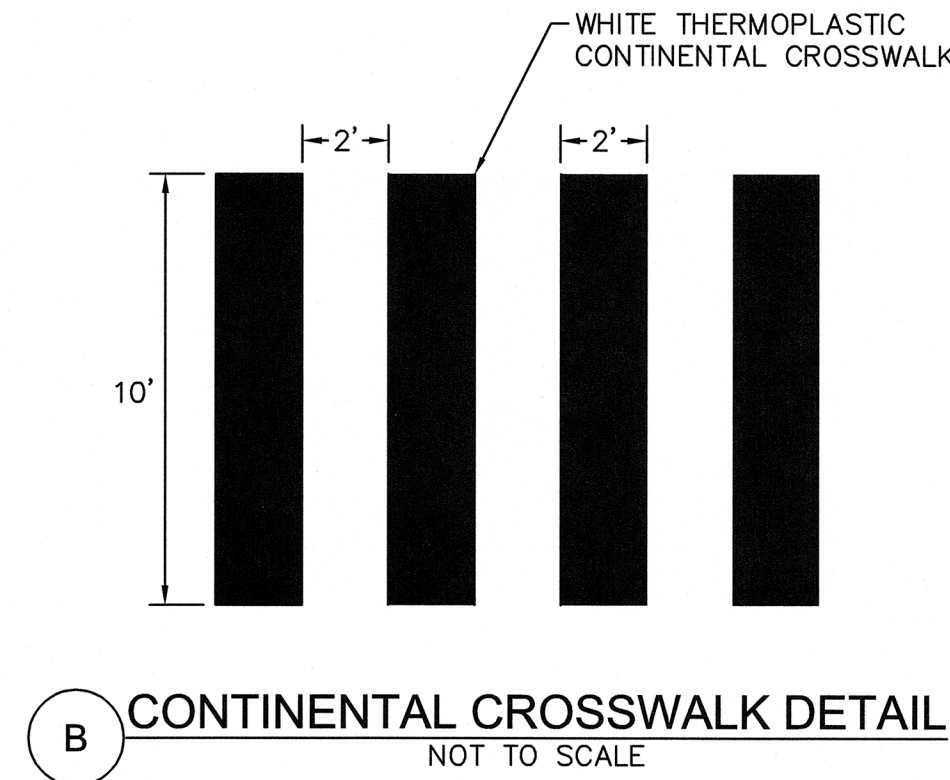
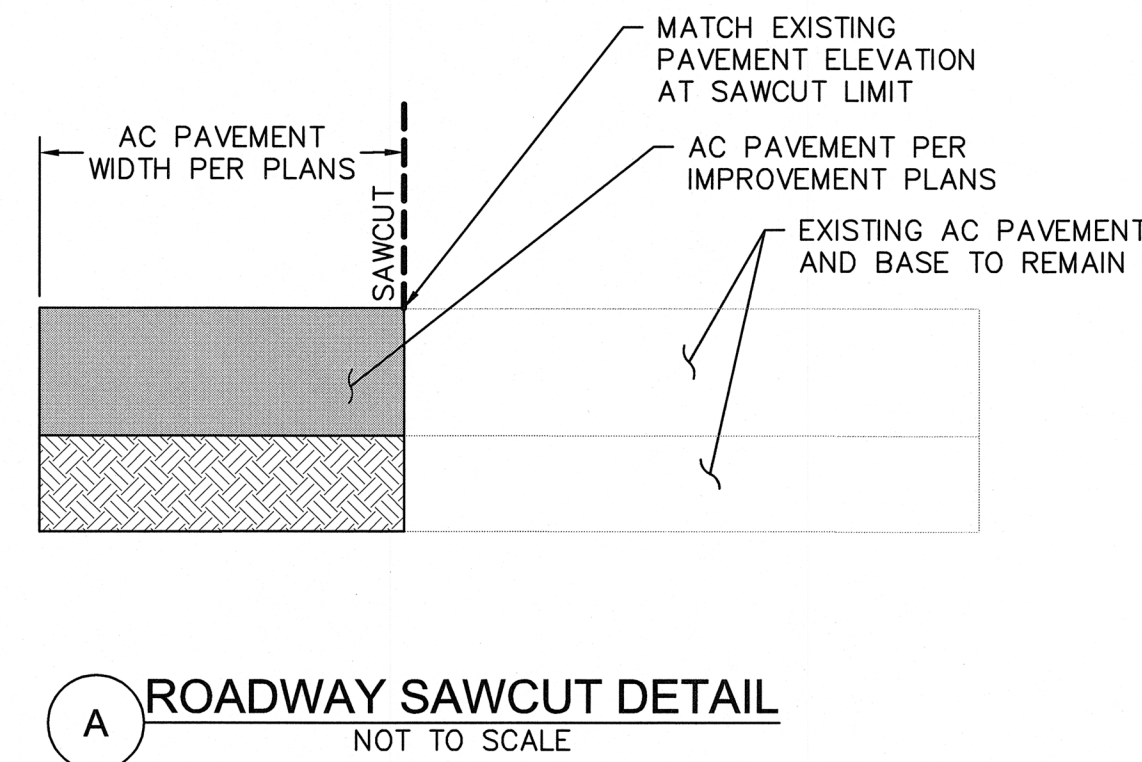
SECTION A-A
STA 1+00 TO 26+85
STA 53+54 TO 82+50



SECTION B-B
STA 27+20 TO 52+79



SECTION C-C
STA 82+50 TO 89+37

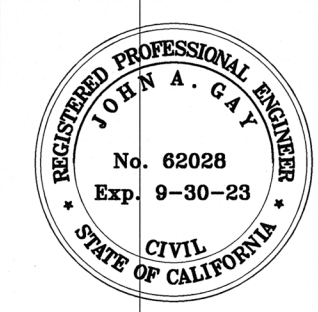


REVISION	DATE	COMMENTS



PREPARED UNDER THE DIRECT SUPERVISION OF:
Nicholas J. Oleskowitz
NICHOLAS J. OLESKOWICZ
9/19/2022
DATE

89464
R.C.E. No.
12/31/22
REG. EXP.



COUNTY OF IMPERIAL PUBLIC WORKS DEPARTMENT
APPROVED FOR CONSTRUCTION BY:
John A. Gay
JOHN A. GAY, P.E.
DIRECTOR OF PUBLIC WORKS
9/20/22
DATE

62028
R.C.E. No.
09/30/23
REG. EXP.



DATE: 04/28/2022
DRAWN: CR - KH
SCALE:
CHECKED: RRS - KH

BICYCLE PATH IMPROVEMENTS ON ATEN ROAD FROM DOGWOOD ROAD TO IMPERIAL VALLEY COLLEGE ENTRANCE

ATPL-5958(118) -- ATEN RD CLASS I BICYCLE PATH IN IMPERIAL COUNTY PROJECT No. 6267

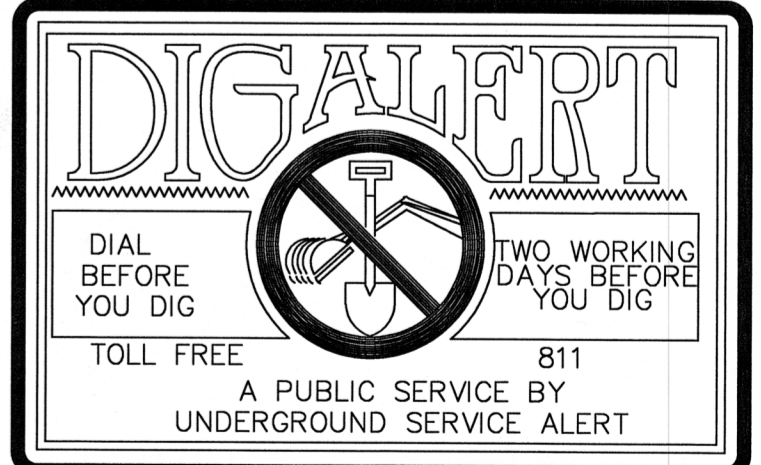
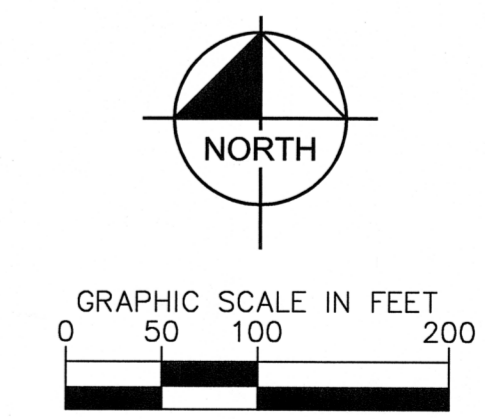
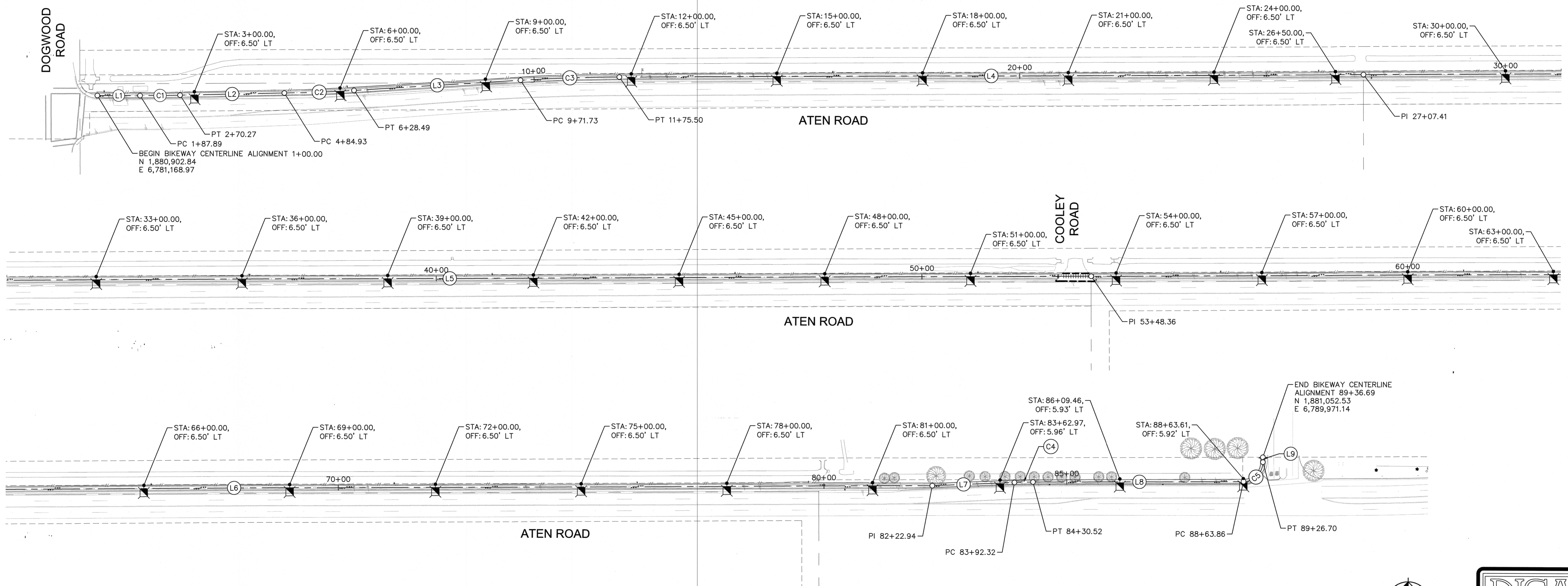
TYPICAL SECTIONS

REFERENCE

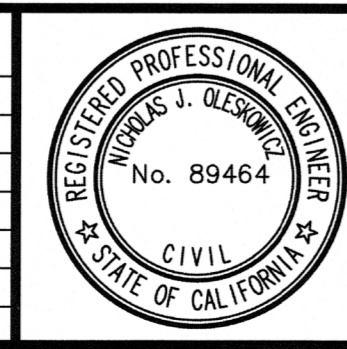
SHEET 03 OF 09

POLE SCHEDULE							
POLE #	POLE TYPE	LAMP QTY	LAMP SIZE/TYPE	VOLTAGE	MOUNTING	MAST ARM	DESCRIPTION
1 - 30	15 FT BREAKAWAY ALUMINUM POLE (ALUMINUM BRUSH FINISH)	30	SPFS HIGH-EFFICIENCY MONOCRYSTALLINE SILICON SP-SF-60W-20W-3-50K-18AH-WH-1-01	12 VDC	15'-0"	0'-4"	POLE FOUNDATION PER DETAILS ON SHEET 02

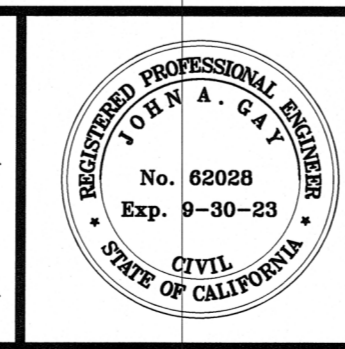
(XX)	LENGTH	BEARING	R	T
L1	87.89'	N90°00'00"E		
C1	82.38'	N89°19'32"E	3,500.00'	41.19'
L2	214.66'	N88°39'05"E		
C2	143.56'	N87°28'35"E	3,500.00'	71.79'
L3	343.24'	N86°18'05"E		
C3	203.76'	N87°58'09"E	3,500.00'	101.91'
L4	1,531.92'	N89°38'13"E		
L5	2,640.95'	N89°36'17"E		
L6	2,874.58'	N89°37'02"E		
L7	169.38'	N87°30'12"E		
C4	38.19'	N88°35'51"E	1,000.00'	19.10'
L8	433.35'	N89°41'30"E		
C5	62.84'	N44°41'15"E	40.00'	40.01'
L9	9.99'	N0°19'00"W		



REVISION	DATE	COMMENTS



PREPARED UNDER THE DIRECT SUPERVISION OF:
Nicholas J. Oleskovicz
 NICHOLAS J. OLESKOWICZ
 9/19/2022
 DATE



COUNTY OF IMPERIAL PUBLIC WORKS DEPARTMENT
 APPROVED FOR CONSTRUCTION BY:
John A. Gay
 JOHN A. GAY, P.E.
 DIRECTOR OF PUBLIC WORKS
 9/20/22
 DATE

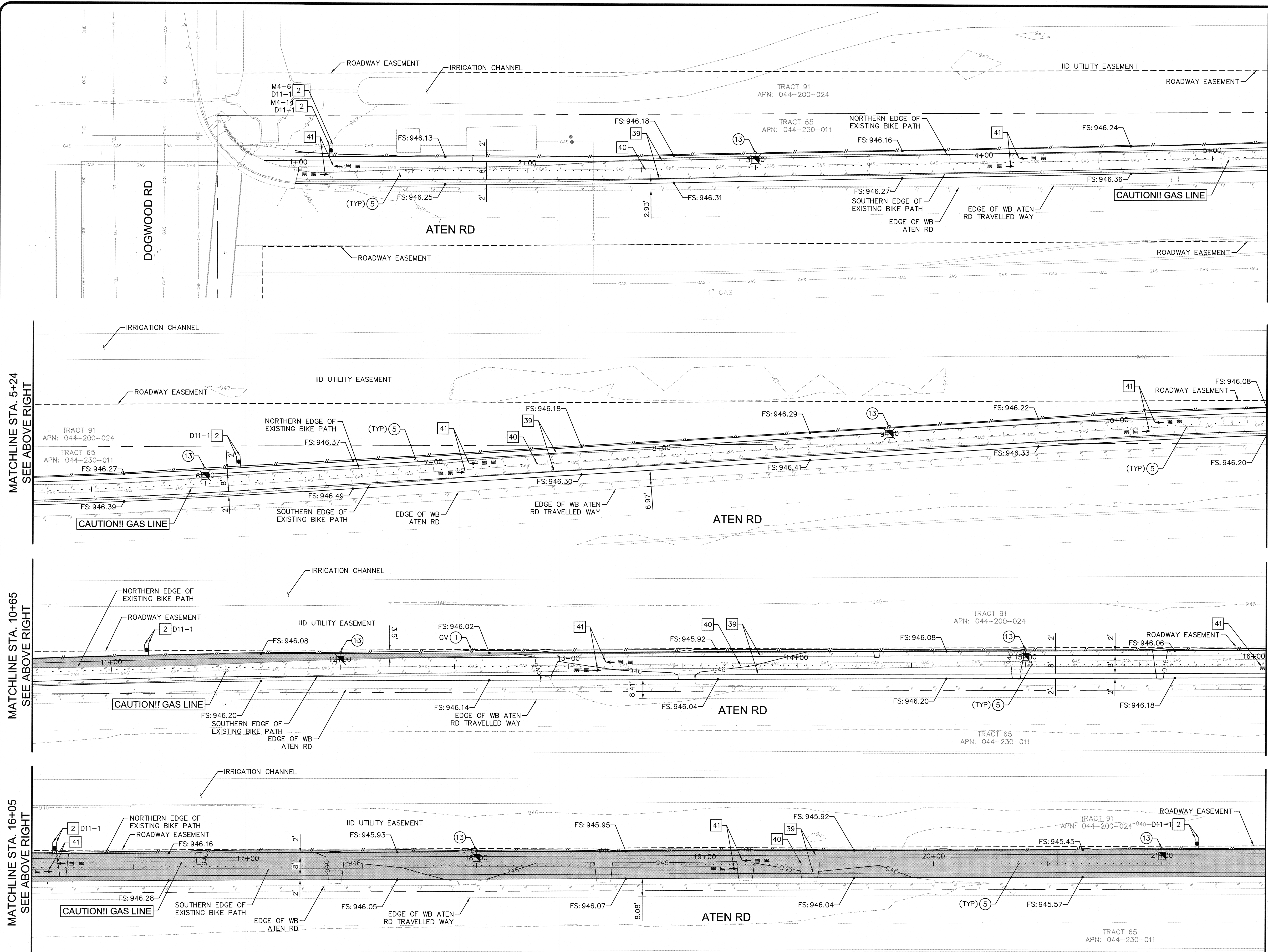
PUBLIC WORKS DEPARTMENT
COUNTY OF IMPERIAL
 EL CENTRO, CALIFORNIA

DATE: 04/28/2022
 DRAWN: CR - KH
 SCALE: N/A
 CHECKED: RRS - KH

BICYCLE PATH IMPROVEMENTS ON ATEN ROAD FROM DOGWOOD ROAD TO IMPERIAL VALLEY COLLEGE ENTRANCE
ATPL-5958(118) -- ATEN RD CLASS I BICYCLE PATH IN IMPERIAL COUNTY
COUNTY PROJECT No. 6267

HORIZONTAL CONTROL SHEET

REFERENCE	SHEET 04 OF 09
-----------	----------------



LEGEND

FULL-DEPTH RECLAMATION - 5% CEMENT (SEE CONSTRUCTION NOTE #5)

EMULSION-AGGREGATE SLURRY, TYPE II

CONCRETE PAVEMENT: 9.5" PCC OVER 6" AB

9" AC PAVEMENT OVER PREPARED SUBGRADE

TRACT LINE

EASEMENT LINE

SAWCUT LINE

DAYLIGHT LINE

SOLAR LED LUMINAIRE AND POLE ASSEMBLY

- ### CONSTRUCTION NOTES
- PROTECT IN PLACE.
 - FULL DEPTH RECLAMATION WITH 5% CEMENT, 6" DEEP/12" WIDE, AND PAVE WITH 2" OF 1/2" HMA (TYPE A), PG76-22M.
 - FURNISH AND INSTALL SOLAR LED BIKE PATH LIGHT AND FOUNDATION WITH BREAKAWAY BASE. POLE HEIGHT SHALL BE 15', NOT INCLUDING BREAKAWAY (TRANSFORMER) BASE, AND LUMINAIRE COLOR TEMPERATURE SHALL BE 4000K. SEE POLE SCHEDULE ON SHEET 04 AND DETAILS ON SHEET 02.

- ### SIGNING AND STRIPING NOTES
- FURNISH AND INSTALL NEW SIGN ON BREAKAWAY POST PER CALTRANS STANDARD PLAN RS2.
 - INSTALL BIKE LANE PATTERN (DETAIL 39) PER 2018 CALTRANS STANDARD PLAN RSP A20D.
 - INSTALL LANE LINE EXTENSION THROUGH INTERSECTION PATTERN (DETAIL 40) PER 2018 CALTRANS STANDARD PLAN RSP A20D.
 - INSTALL "BIKE LANE" MARKING AND ARROW PER MUTCD FIGURE 9C-3 C AND DETAIL C ON SHEET 03.

SIGN LEGEND

BIKE ROUTE
D11-1
24"x18"

END
M4-6
24"x12"

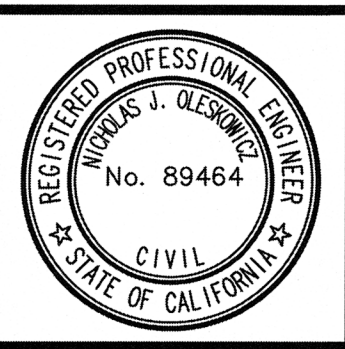
BEGIN
M4-14
24"x12"

NO PARKING ANY TIME
R26(CA)
12"x18"

NORTH

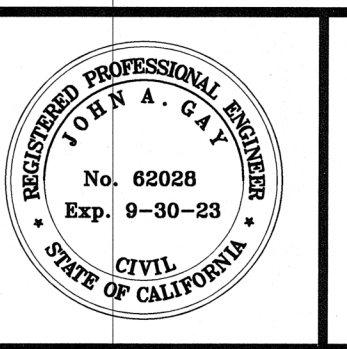
GRAPHIC SCALE IN FEET
0 10 20 40

REVISION	DATE	COMMENTS



PREPARED UNDER THE DIRECT SUPERVISION OF:
Nicholas J. Oleskovic
 NICHOLAS J. OLESKOWICZ
 9/19/2022
 DATE

89464
 R.C.E. No.
 12/31/22
 REG. EXP.



COUNTY OF IMPERIAL PUBLIC WORKS DEPARTMENT
 APPROVED FOR CONSTRUCTION BY:
John A. Gay
 JOHN A. GAY, P.E.
 DIRECTOR OF PUBLIC WORKS
 9/20/22
 DATE

62028
 R.C.E. No.
 09/30/23
 REG. EXP.

DATE: 04/28/2022
 DRAWN: CR - KH
 SCALE:
 CHECKED: RRS - KH

PUBLIC WORKS DEPARTMENT
COUNTY OF IMPERIAL
 EL CENTRO, CALIFORNIA

BICYCLE PATH IMPROVEMENTS ON ATEN ROAD FROM DOGWOOD ROAD TO IMPERIAL VALLEY COLLEGE ENTRANCE

ATPL-5958(118) -- ATEN RD CLASS I BICYCLE PATH IN IMPERIAL COUNTY
 COUNTY PROJECT No. 6267

IMPROVEMENT PLANS

REFERENCE	SHEET 05 OF 09
-----------	----------------

MATCHLINE STA. 21+45
SEE SHEET 05

MATCHLINE STA. 26+85
SEE ABOVE RIGHT

MATCHLINE STA. 32+25
SEE ABOVE RIGHT

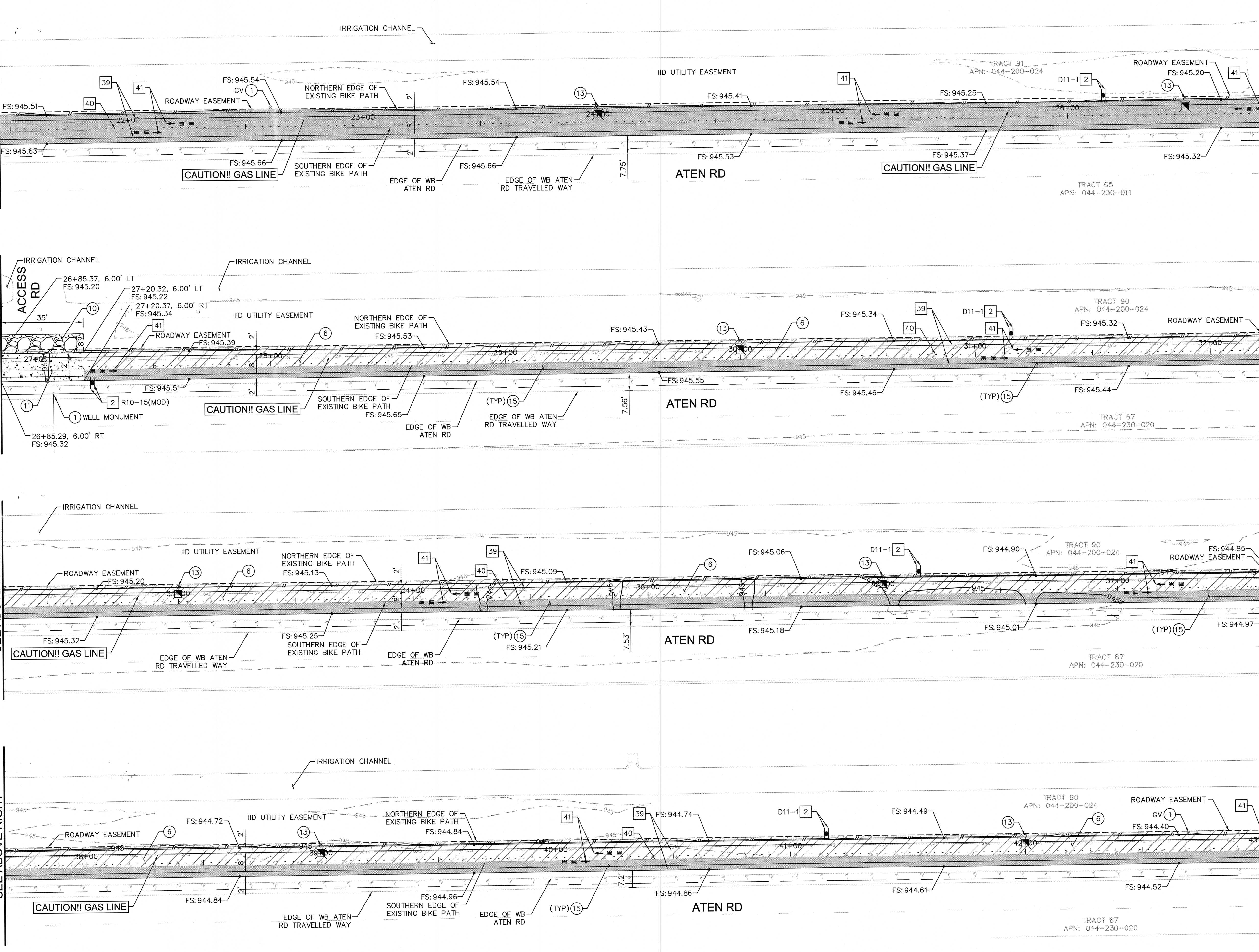
MATCHLINE STA. 37+65
SEE ABOVE RIGHT

MATCHLINE STA. 26+85
SEE BELOW LEFT

MATCHLINE STA. 32+25
SEE BELOW LEFT

MATCHLINE STA. 37+65
SEE BELOW LEFT

MATCHLINE STA. 43+05
SEE SHEET 07



LEGEND

- FULL-DEPTH RECLAMATION - 5% CEMENT (SEE CONSTRUCTION NOTE #5)
- EMULSION-AGGREGATE SLURRY, TYPE II
- CONCRETE PAVEMENT: 9.5" PCC OVER 6" AB
- 9" AC PAVEMENT OVER PREPARED SUBGRADE
- TRACT LINE
- EASEMENT LINE
- SAWCUT LINE
- DAYLIGHT LINE
- SOLAR LED LUMINAIRE AND POLE ASSEMBLY

CONSTRUCTION NOTES

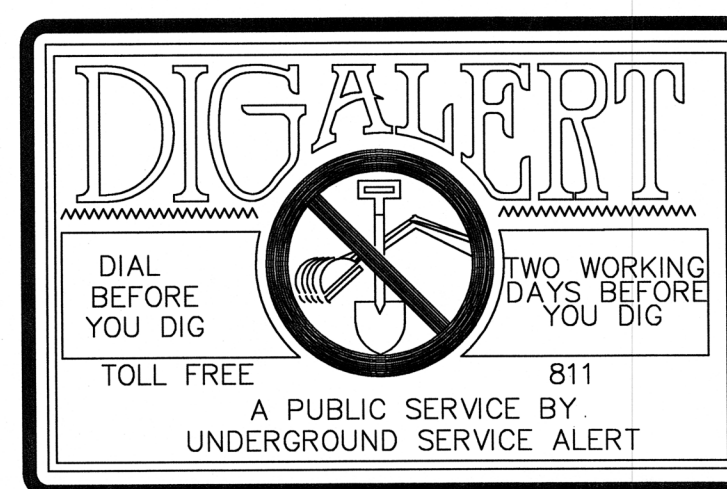
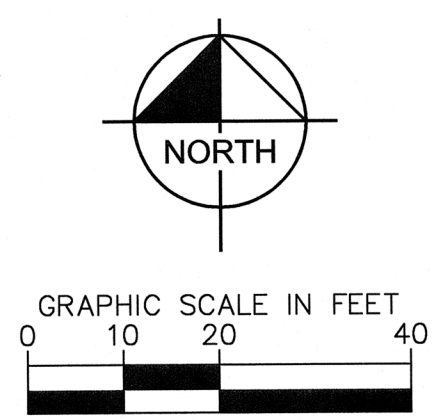
- 1 PROTECT IN PLACE.
- 6 EMULSION-AGGREGATE SLURRY, TYPE II
- 10 INSTALL 12" THICK MAT OF 2" CRUSHED GRAVEL SHOULDER BACKING OVER CLASS B2 NON-WOVEN GEOTEXTILE MATERIAL.
- 11 CONSTRUCT CONCRETE PAVEMENT SECTION: 9.5" PCC OVER 6" AB, PER CALTRANS HIGHWAY DESIGN MANUAL AND SPECIFICATIONS.
- 13 FURNISH AND INSTALL SOLAR LED BIKE PATH LIGHT AND FOUNDATION WITH BREAKAWAY BASE. POLE HEIGHT SHALL BE 15', NOT INCLUDING BREAKAWAY (TRANSFORMER) BASE, AND LUMINAIRE COLOR TEMPERATURE SHALL BE 4000K. SEE POLE SCHEDULE ON SHEET 04 AND DETAILS ON SHEET 02.
- 15 FULL DEPTH RECLAMATION WITH 5% CEMENT, 6" DEEP/WIDTH VARIES ADJACENT EXISTING PATH, AND PAVE WITH 2" OF 1/2" HMA (TYPE A), PG76-22M. FULL SECTION WIDTH INCLUDING EXISTING PATH IS 12'.

SIGNING AND STRIPING NOTES

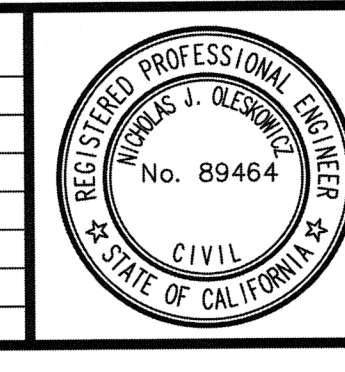
- 2 FURNISH AND INSTALL NEW SIGN ON BREAKAWAY POST PER CALTRANS STANDARD PLAN RS2.
- 39 INSTALL BIKE LANE PATTERN (DETAIL 39) PER 2018 CALTRANS STANDARD PLAN RSP A20D.
- 40 INSTALL LANE LINE EXTENSION THROUGH INTERSECTION PATTERN (DETAIL 40) PER 2018 CALTRANS STANDARD PLAN RSP A20D.
- 41 INSTALL "BIKE LANE" MARKING AND ARROW PER MUTCD FIGURE 9C-3 C AND DETAIL C ON SHEET 03.

SIGN LEGEND

- BIKE ROUTE
- TURNING VEHICLES
- D11-1 24"x18"
- R10-15(MOD) 30"x30"

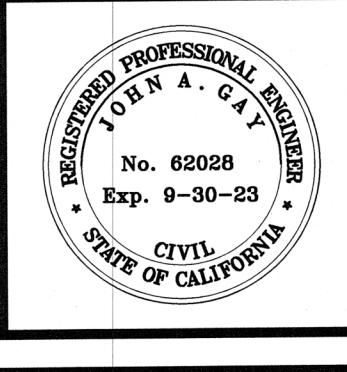


REVISION	DATE	COMMENTS



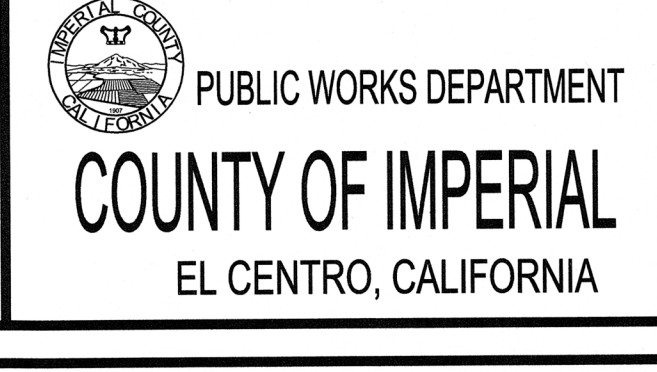
PREPARED UNDER THE DIRECT SUPERVISION OF:
Nicholas J. Oleskiewicz
 NICHOLAS J. OLESKIEWICZ
 9/19/2022
 DATE

89464
 R.C.E. No.
 12/31/22
 REG. EXP.



COUNTY OF IMPERIAL PUBLIC WORKS DEPARTMENT
 APPROVED FOR CONSTRUCTION BY:
John A. Gay
 JOHN A. GAY, P.E.
 DIRECTOR OF PUBLIC WORKS
 9/20/22
 DATE

62028
 R.C.E. No.
 09/30/23
 REG. EXP.



DATE: 04/28/2022
 DRAWN: CR - KH
 SCALE:
 CHECKED: RRS - KH

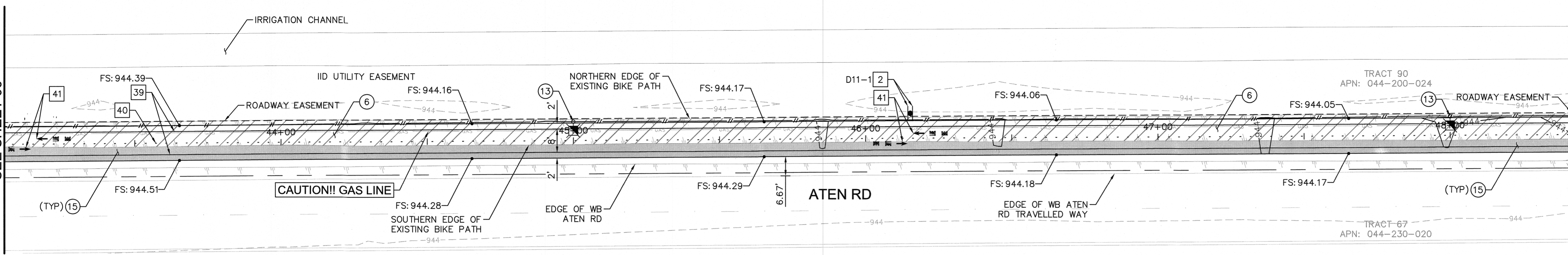
BICYCLE PATH IMPROVEMENTS ON ATEN RD FROM DOGWOOD ROAD TO IMPERIAL VALLEY COLLEGE ENTRANCE

ATPL-5958(118) -- ATEN RD CLASS I BICYCLE PATH IN IMPERIAL COUNTY COUNTY PROJECT No. 6267

IMPROVEMENT PLANS	
REFERENCE	SHEET 06 OF 09

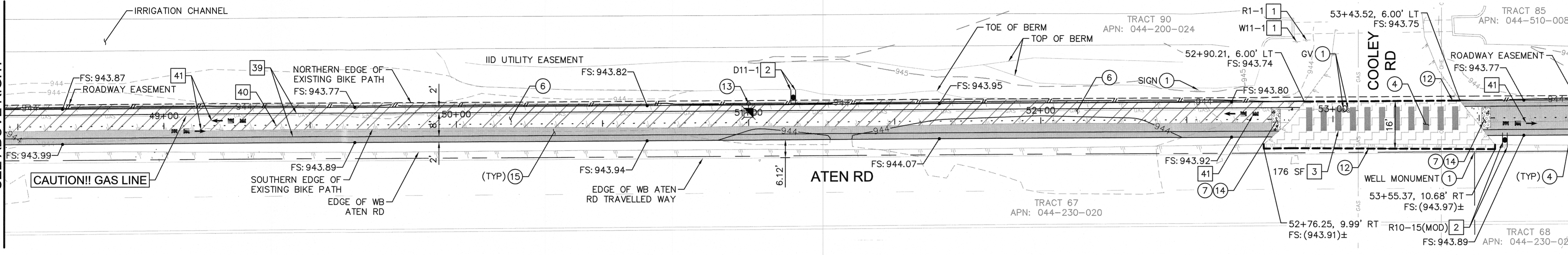
MATCHLINE STA. 43+05
SEE SHEET 06

MATCHLINE STA. 48+45
SEE BELOW LEFT



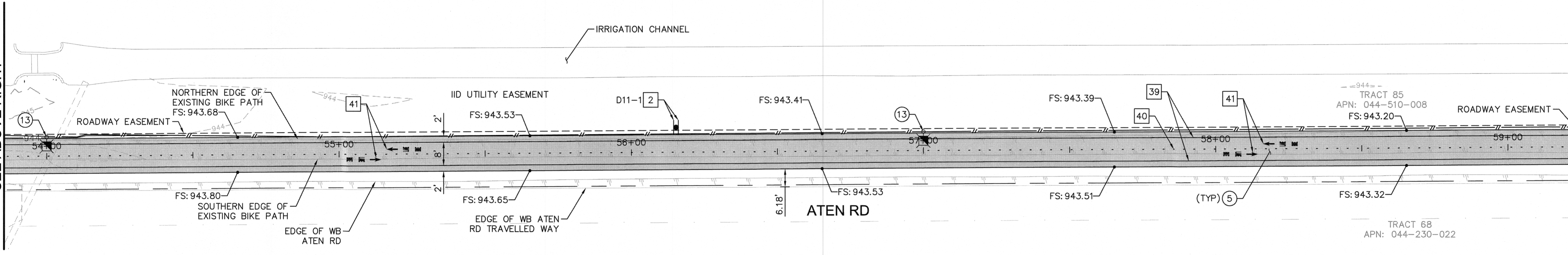
MATCHLINE STA. 48+45
SEE ABOVE RIGHT

MATCHLINE STA. 53+85
SEE BELOW LEFT



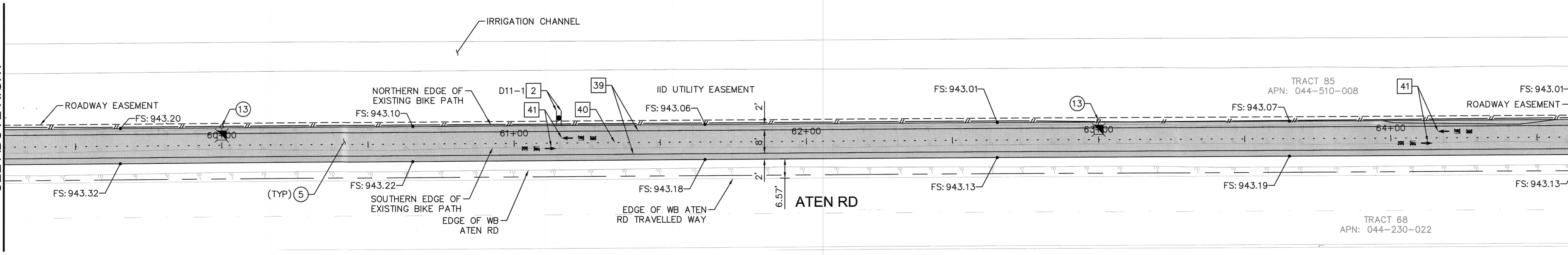
MATCHLINE STA. 53+85
SEE ABOVE RIGHT

MATCHLINE STA. 59+25
SEE BELOW LEFT



MATCHLINE STA. 59+25
SEE ABOVE RIGHT

MATCHLINE STA. 64+05
SEE SHEET 08



LEGEND

FULL-DEPTH RECLAMATION - 5% CEMENT
(SEE CONSTRUCTION NOTE #5)

EMULSION-AGGREGATE SLURRY, TYPE II

CONCRETE PAVEMENT: 9.5" PCC OVER 6" AB

9" AC PAVEMENT OVER PREPARED SUBGRADE

TRACT LINE

EASEMENT LINE

SAWCUT LINE

DAYLIGHT LINE

SOLAR LED LUMINAIRE AND POLE ASSEMBLY

- ### CONSTRUCTION NOTES
- PROTECT IN PLACE.
 - CONSTRUCT 9" AC OVER PREPARED SUBGRADE.
 - FULL DEPTH RECLAMATION WITH 5% CEMENT, 6" DEEP/12" WIDE, AND PAVE WITH 2" OF 1/2" HMA (TYPE A), PG76-22M.
 - EMULSION-AGGREGATE SLURRY, TYPE II
 - FURNISH AND INSTALL DETECTABLE WARNING SURFACE.
 - SAWCUT PER DETAIL A ON SHEET 03.
 - FURNISH AND INSTALL SOLAR LED BIKE PATH LIGHT AND FOUNDATION WITH BREAKAWAY BASE. POLE HEIGHT SHALL BE 15', NOT INCLUDING BREAKAWAY (TRANSFORMER) BASE, AND LUMINAIRE COLOR TEMPERATURE SHALL BE 4000K. SEE POLE SCHEDULE ON SHEET 04 AND DETAILS ON SHEET 02.
 - CONSTRUCT 4" PCC SIDEWALK PER COUNTY OF IMPERIAL STANDARD DWG NO. 420.
 - FULL DEPTH RECLAMATION WITH 5% CEMENT, 6" DEEP/WIDTH VARIES ADJACENT EXISTING PATH, AND PAVE WITH 2" OF 1/2" HMA (TYPE A), PG76-22M. FULL SECTION WIDTH INCLUDING EXISTING PATH IS 12'.

- ### SIGNING AND STRIPING NOTES
- PROTECT IN PLACE EXISTING SIGN.
 - FURNISH AND INSTALL NEW SIGN ON BREAKAWAY POST PER CALTRANS STANDARD PLAN RS2.
 - INSTALL WHITE CONTINENTAL CROSSWALK PER CALTRANS STANDARD PLAN A24F AND PER DETAIL B ON SHEET 03.
 - INSTALL BIKE LANE PATTERN (DETAIL 39) PER 2018 CALTRANS STANDARD PLAN RSP A20D.
 - INSTALL LANE LINE EXTENSION THROUGH INTERSECTION PATTERN (DETAIL 40) PER 2018 CALTRANS STANDARD PLAN RSP A20D.
 - INSTALL "BIKE LANE" MARKING AND ARROW PER MUTCD FIGURE 9C-3 C AND DETAIL C ON SHEET 03.

SIGN LEGEND

D11-1 24"x18"

R1-1 36"x36"

R10-15(MOD) 30"x30"

W11-1 36"x36"

BIKE ROUTE

STOP

TURNING VEHICLES TO

BIKE

NORTH

GRAPHIC SCALE IN FEET
0 10 20 40

DIG ALERT
DIAL BEFORE YOU DIG
TWO WORKING DAYS BEFORE YOU DIG
TOLL FREE 811
A PUBLIC SERVICE BY UNDERGROUND SERVICE ALERT

REVISION	DATE	COMMENTS

PREPARED UNDER THE DIRECT SUPERVISION OF:

Nicholas J. Oleskowitz
NICHOLAS J. OLESKOWICZ
9/19/2022
DATE

89464
R.C.E. No.
12/31/22
REG. EXP.

COUNTY OF IMPERIAL PUBLIC WORKS DEPARTMENT
APPROVED FOR CONSTRUCTION BY:

John A. Gay
JOHN A. GAY, P.E.
DIRECTOR OF PUBLIC WORKS
9/20/22
DATE

62028
R.C.E. No.
09/30/23
REG. EXP.

PUBLIC WORKS DEPARTMENT
COUNTY OF IMPERIAL
EL CENTRO, CALIFORNIA

DATE: 04/28/2022
DRAWN: CR - KH
SCALE:
CHECKED: RRS - KH

BICYCLE PATH IMPROVEMENTS ON ATEN ROAD FROM DOGWOOD ROAD TO IMPERIAL VALLEY COLLEGE ENTRANCE

ATPL-5958(118) -- ATEN RD CLASS I BICYCLE PATH IN IMPERIAL COUNTY COUNTY PROJECT No. 6267

IMPROVEMENT PLANS

REFERENCE

SHEET 07 OF 09

MATCHLINE STA. 64+65
SEE SHEET 07

MATCHLINE STA. 70+05
SEE ABOVE RIGHT

MATCHLINE STA. 75+45
SEE ABOVE RIGHT

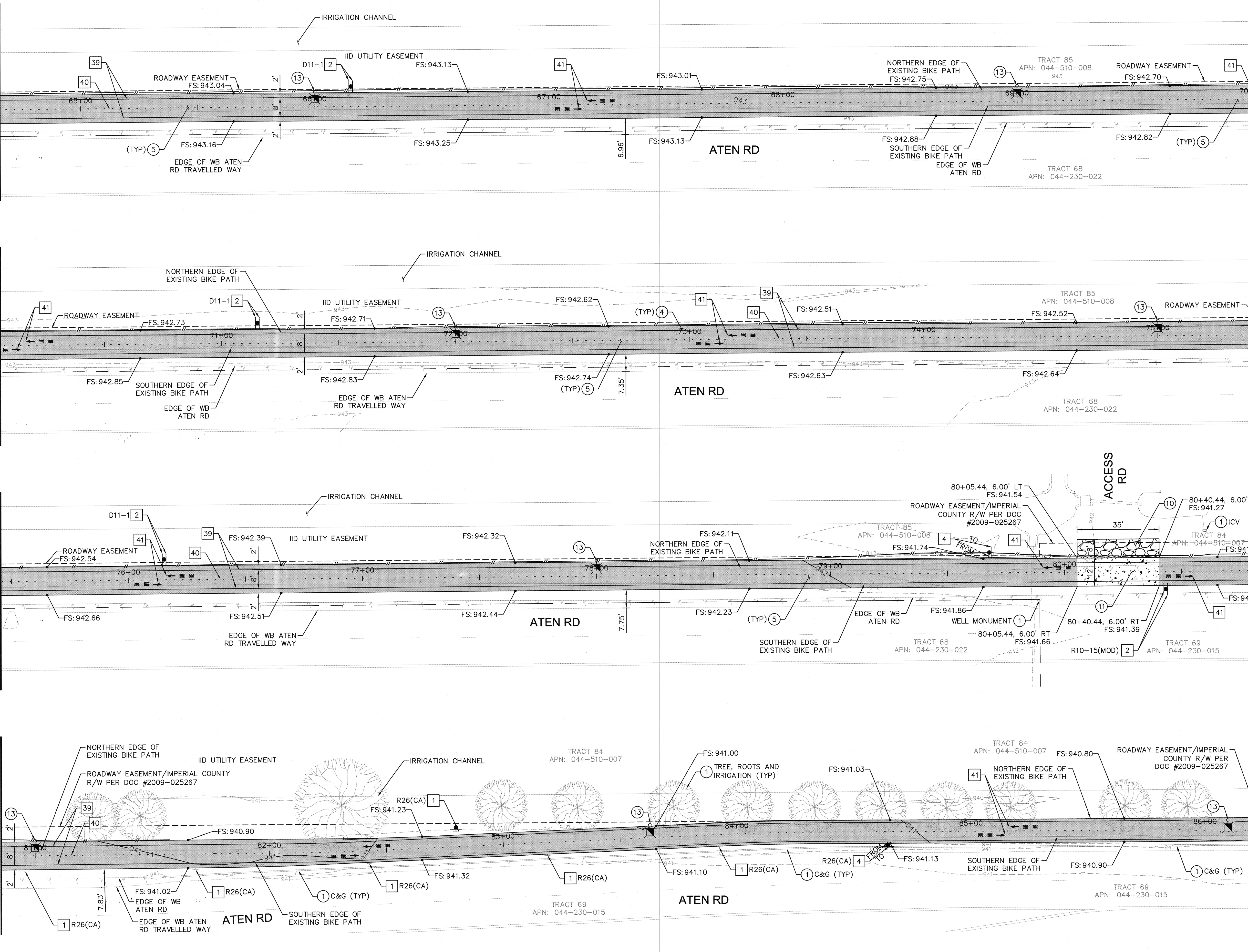
MATCHLINE STA. 80+85
SEE ABOVE RIGHT

MATCHLINE STA. 70+05
SEE BELOW LEFT

MATCHLINE STA. 75+45
SEE BELOW LEFT

MATCHLINE STA. 80+85
SEE BELOW LEFT

MATCHLINE STA. 86+25
SEE SHEET 09



LEGEND

- FULL-DEPTH RECLAMATION - 5% CEMENT (SEE CONSTRUCTION NOTE #5)
- EMULSION-AGGREGATE SLURRY, TYPE II
- CONCRETE PAVEMENT: 9.5" PCC OVER 6" AB
- 9" AC PAVEMENT OVER PREPARED SUBGRADE
- TRACT LINE
- EASEMENT LINE
- SAWCUT LINE
- DAYLIGHT LINE
- SOLAR LED LUMINAIRE AND POLE ASSEMBLY

CONSTRUCTION NOTES

- PROTECT IN PLACE.
- CONSTRUCT 9" AC OVER PREPARED SUBGRADE.
- FULL DEPTH RECLAMATION WITH 5% CEMENT, 6" DEEP/12' WIDE, AND PAVE WITH 2" OF 1/2" HMA (TYPE A), PG76-22M.
- INSTALL 12" THICK MAT OF 2" CRUSHED GRAVEL SHOULDER BACKING OVER CLASS B2 NON-WOVEN GEOTEXTILE MATERIAL.
- CONSTRUCT CONCRETE PAVEMENT SECTION: 9.5" PCC OVER 6" AB, PER CALTRANS HIGHWAY DESIGN MANUAL AND SPECIFICATIONS.
- FURNISH AND INSTALL SOLAR LED BIKE PATH LIGHT AND FOUNDATION WITH BREAKAWAY BASE. POLE HEIGHT SHALL BE 15', NOT INCLUDING BREAKAWAY (TRANSFORMER) BASE, AND LUMINAIRE COLOR TEMPERATURE SHALL BE 4000K. SEE POLE SCHEDULE ON SHEET 04 AND DETAILS ON SHEET 02.

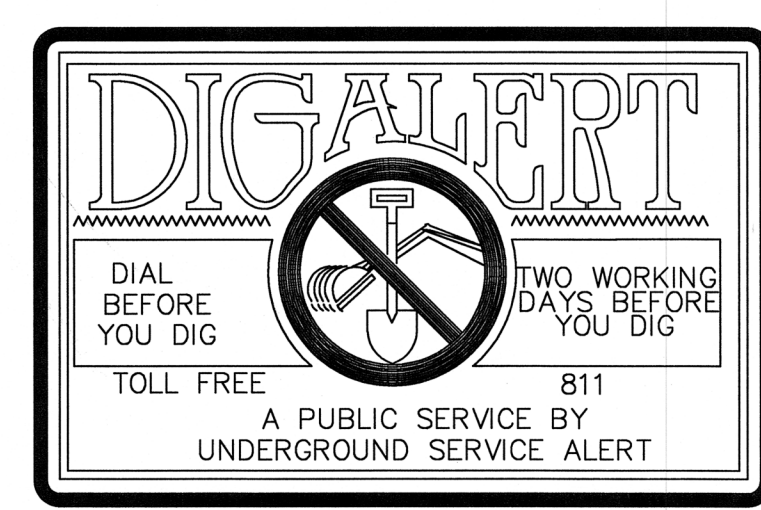
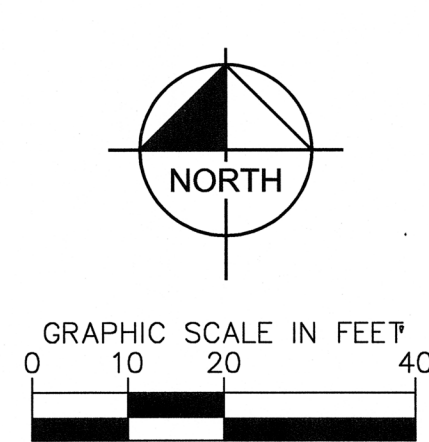
SIGNING AND STRIPING NOTES

- PROTECT IN PLACE EXISTING SIGN.
- FURNISH AND INSTALL NEW SIGN ON BREAKAWAY POST PER CALTRANS STANDARD PLAN RS2.
- RELOCATE EXISTING SIGN TO NEW BREAK AWAY POST PER PLAN.
- INSTALL BIKE LANE PATTERN (DETAIL 39) PER 2018 CALTRANS STANDARD PLAN RSP A20D.
- INSTALL LANE LINE EXTENSION THROUGH INTERSECTION PATTERN (DETAIL 40) PER 2018 CALTRANS STANDARD PLAN RSP A20D.
- INSTALL "BIKE LANE" MARKING AND ARROW PER MUTCD FIGURE 9C-3 C AND DETAIL C ON SHEET 03.

SIGN LEGEND

Sign Legend details:

- Bike Route:** D11-1 24"x18"
- END:** M4-6 24"x12"
- BEGIN:** M4-14 24"x12"
- STOP:** R1-1 36"x36"
- TURNING VEHICLES:** R10-15(MOD) 30"x30"
- NO PARKING ANY TIME:** R26(CA) 12"x18"
- Bike Symbol:** W11-1 36"x36"



REVISION	DATE	COMMENTS

PREPARED UNDER THE DIRECT SUPERVISION OF:

Nicholas J. Oleskowicz
NICHOLAS J. OLESKOWICZ
9/19/2022
DATE

89464
R.C.E. No.
12/31/22
REG. EXP.

COUNTY OF IMPERIAL PUBLIC WORKS DEPARTMENT
APPROVED FOR CONSTRUCTION BY:

John A. Gay
JOHN A. GAY, P.E.
DIRECTOR OF PUBLIC WORKS
9/20/22
DATE

62028
R.C.E. No.
09/30/23
REG. EXP.

PUBLIC WORKS DEPARTMENT
COUNTY OF IMPERIAL
EL CENTRO, CALIFORNIA

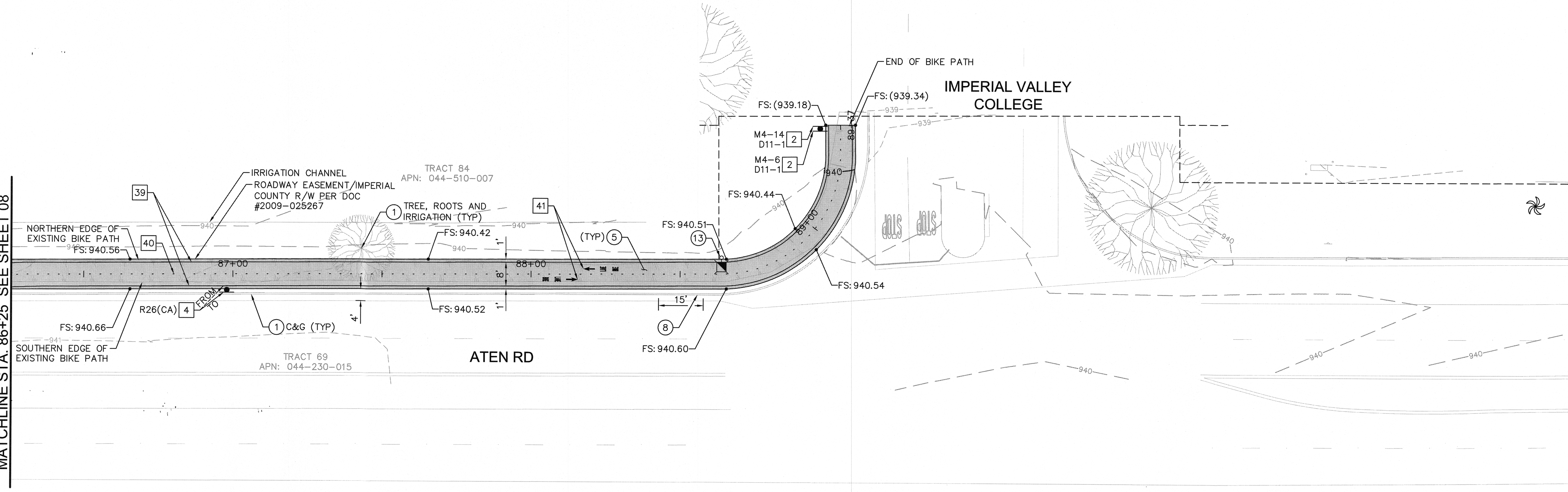
DATE: 04/28/2022
DRAWN: CR - KH
SCALE:
CHECKED: RRS - KH

BICYCLE PATH IMPROVEMENTS ON ATEN RD FROM DOGWOOD ROAD TO IMPERIAL VALLEY COLLEGE ENTRANCE

ATPL-5958(118) -- ATEN RD CLASS I BICYCLE PATH IN IMPERIAL COUNTY COUNTY PROJECT No. 6267

IMPROVEMENT PLANS	
REFERENCE	
SHEET 08	OF 09

MATCHLINE STA. 86+25 SEE SHEET 08



LEGEND

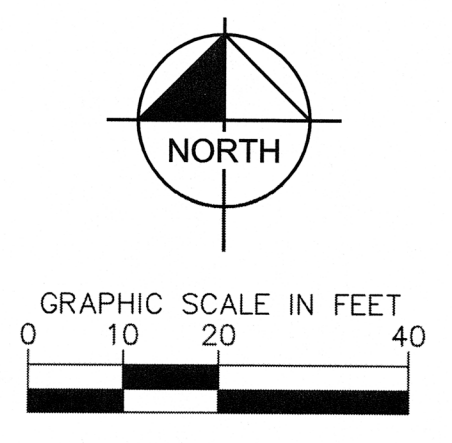
FULL-DEPTH RECLAMATION - 5% CEMENT (SEE CONSTRUCTION NOTE #5)	
EMULSION-AGGREGATE SLURRY, TYPE II	
CONCRETE PAVEMENT: 9.5" PCC OVER 6" AB	
9" AC PAVEMENT OVER PREPARED SUBGRADE	
TRACT LINE	
EASEMENT LINE	
SAWCUT LINE	
DAYLIGHT LINE	
SOLAR LED LUMINAIRE AND POLE ASSEMBLY	

- CONSTRUCTION NOTES**
- 1 PROTECT IN PLACE.
 - 5 FULL DEPTH RECLAMATION WITH 5% CEMENT, 6" DEEP/12" WIDE, AND PAVE WITH 2" OF 1/2" HMA (TYPE A), PG76-22M.
 - 8 REMOVE AND REPLACE 6" CURB AND GUTTER PER COUNTY OF IMPERIAL STANDARD DWG NO. 400.
 - 13 FURNISH AND INSTALL SOLAR LED BIKE PATH LIGHT AND FOUNDATION WITH BREAKAWAY BASE. POLE HEIGHT SHALL BE 15', NOT INCLUDING BREAKAWAY (TRANSFORMER) BASE, AND LUMINAIRE COLOR TEMPERATURE SHALL BE 4000K. SEE POLE SCHEDULE ON SHEET 04 AND DETAILS ON SHEET 02.

- SIGNING AND STRIPING NOTES**
- 2 FURNISH AND INSTALL NEW SIGN ON BREAKAWAY POST PER CALTRANS STANDARD PLAN RS2.
 - 4 RELOCATE EXISTING SIGN TO NEW BREAK AWAY POST PER PLAN.
 - 39 INSTALL BIKE LANE PATTERN (DETAIL 39) PER 2018 CALTRANS STANDARD PLAN RSP A20D.
 - 40 INSTALL LANE LINE EXTENSION THROUGH INTERSECTION PATTERN (DETAIL 40) PER 2018 CALTRANS STANDARD PLAN RSP A20D.
 - 41 INSTALL "BIKE LANE" MARKING AND ARROW PER MUTCD FIGURE 9C-3 C AND DETAIL C ON SHEET 03.

SIGN LEGEND

 D11-1 24"x18"	 M4-6 24"x12"	 M4-14 24"x12"	 R1-1 36"x36"	 R10-15(MOD) 30"x30"
 R26(CA) 12"x18"	 W11-1 36"x36"			



DIG ALERT

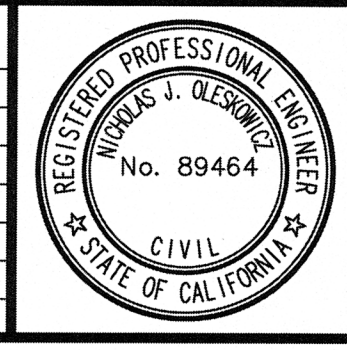
DIAL BEFORE YOU DIG

TWO WORKING DAYS BEFORE YOU DIG

TOLL FREE 811

A PUBLIC SERVICE BY UNDERGROUND SERVICE ALERT

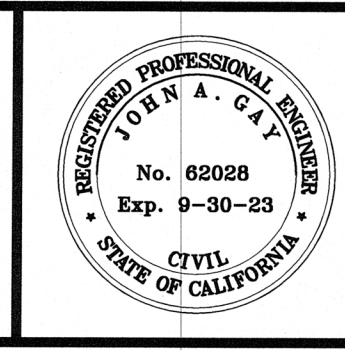
REVISION	DATE	COMMENTS



PREPARED UNDER THE DIRECT SUPERVISION OF:

Nicholas J. Oleskiewicz

NICHOLAS J. OLESKOWICZ
R.C.E. No. 89464
DATE 9/19/2022
REG. EXP. 12/31/22



COUNTY OF IMPERIAL PUBLIC WORKS DEPARTMENT
APPROVED FOR CONSTRUCTION BY:

John A. Gay

JOHN A. GAY, P.E.
DIRECTOR OF PUBLIC WORKS
DATE 9/20/22
R.C.E. No. 62028
REG. EXP. 09/30/23

PUBLIC WORKS DEPARTMENT
COUNTY OF IMPERIAL
EL CENTRO, CALIFORNIA

DATE 04/28/2022
DRAWN CR - KH
SCALE
CHECKED RRS - KH

BICYCLE PATH IMPROVEMENTS ON ATEN ROAD FROM DOGWOOD ROAD TO IMPERIAL VALLEY COLLEGE ENTRANCE

ATPL-5958(118) -- ATEN RD CLASS I BICYCLE PATH IN IMPERIAL COUNTY
COUNTY PROJECT No. 6267

IMPROVEMENT PLANS

REFERENCE	SHEET 09 OF 09
-----------	----------------