

3 ft x 5ft BURIED VAULT
16+82
SPLICE
16.6 FT WEST OF C/L
PLACED MARKER POST

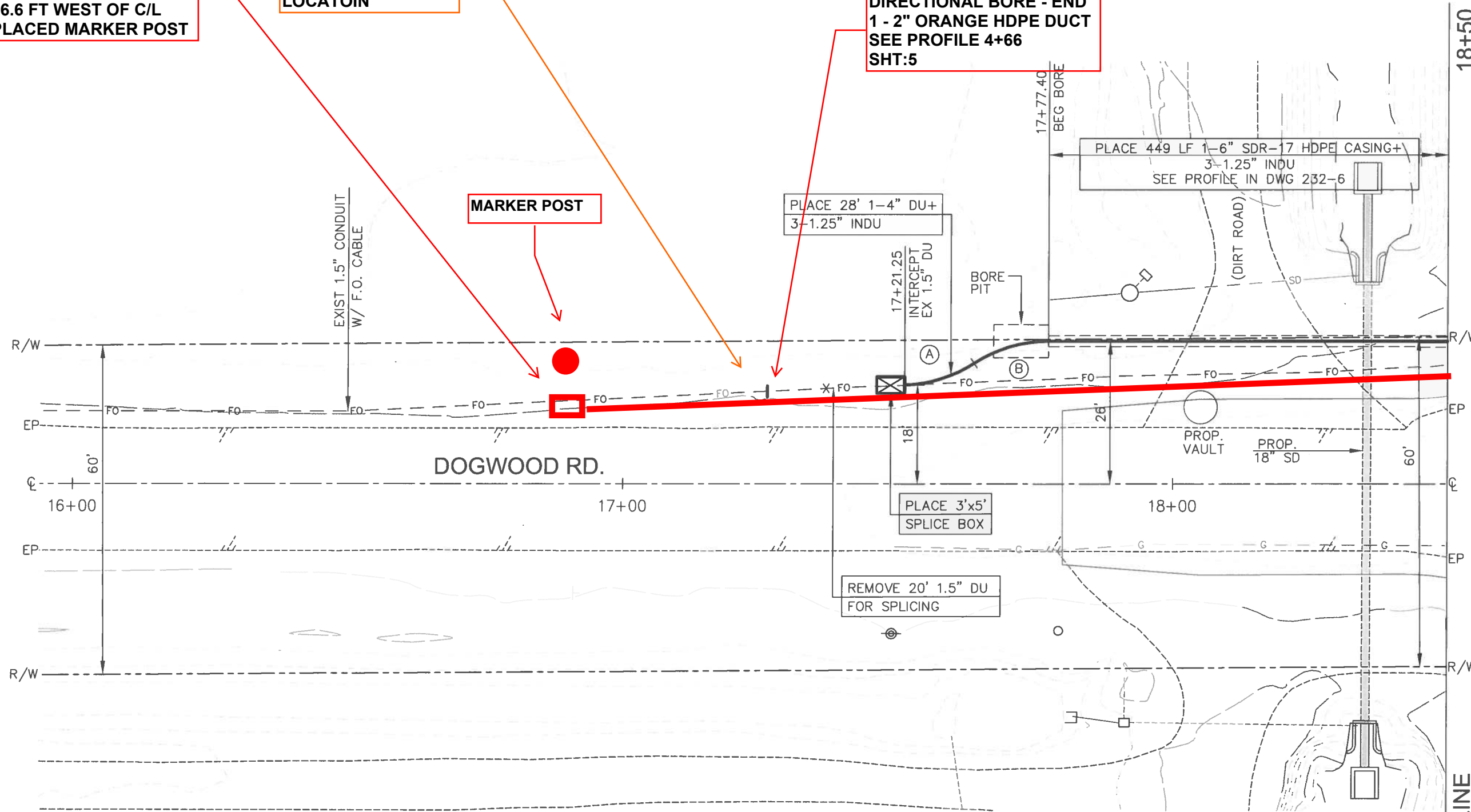
TRENCH 50 FT FROM
BORE TO SPLICE
LOCATOIN

DIRECTIONAL BORE - END
1 - 2" ORANGE HDPE DUCT
SEE PROFILE 4+66
SHT:5

MARKER POST

PLACE 28' 1-4" DU+
3-1.25" INDU

PLACE 449 LF 1-6" SDR-17 HDPE CASING+
3-1.25" INDU
SEE PROFILE IN DWG 232-6



CURVE	RADIUS	DELTA	LENGTH
(A)	25'	30°41'18"	13.39'
(B)	25'	32°51'37"	14.34'

REVISIONS:

NOTES:

**BORE PROFILE
SHT 5**

SEE DWG 232-4

MATCHLINE



PREPARED FOR RECORD
APPROVED FOR TANYA HERNANDEZ
OUTSIDE PLANT ENGINEER DATE
FORKERT ENGINEERING &
SURVEYING, INC.
22311 BROOKHURST ST., SUITE 203
HUNTINGTON BEACH, CA 92646
PHONE: (714) 963-6783

PROPRIETARY
USE PURSUANT TO COMPANY INSTRUCTIONS
SPECIFICATION WR 34945
PROJECT NUMBER

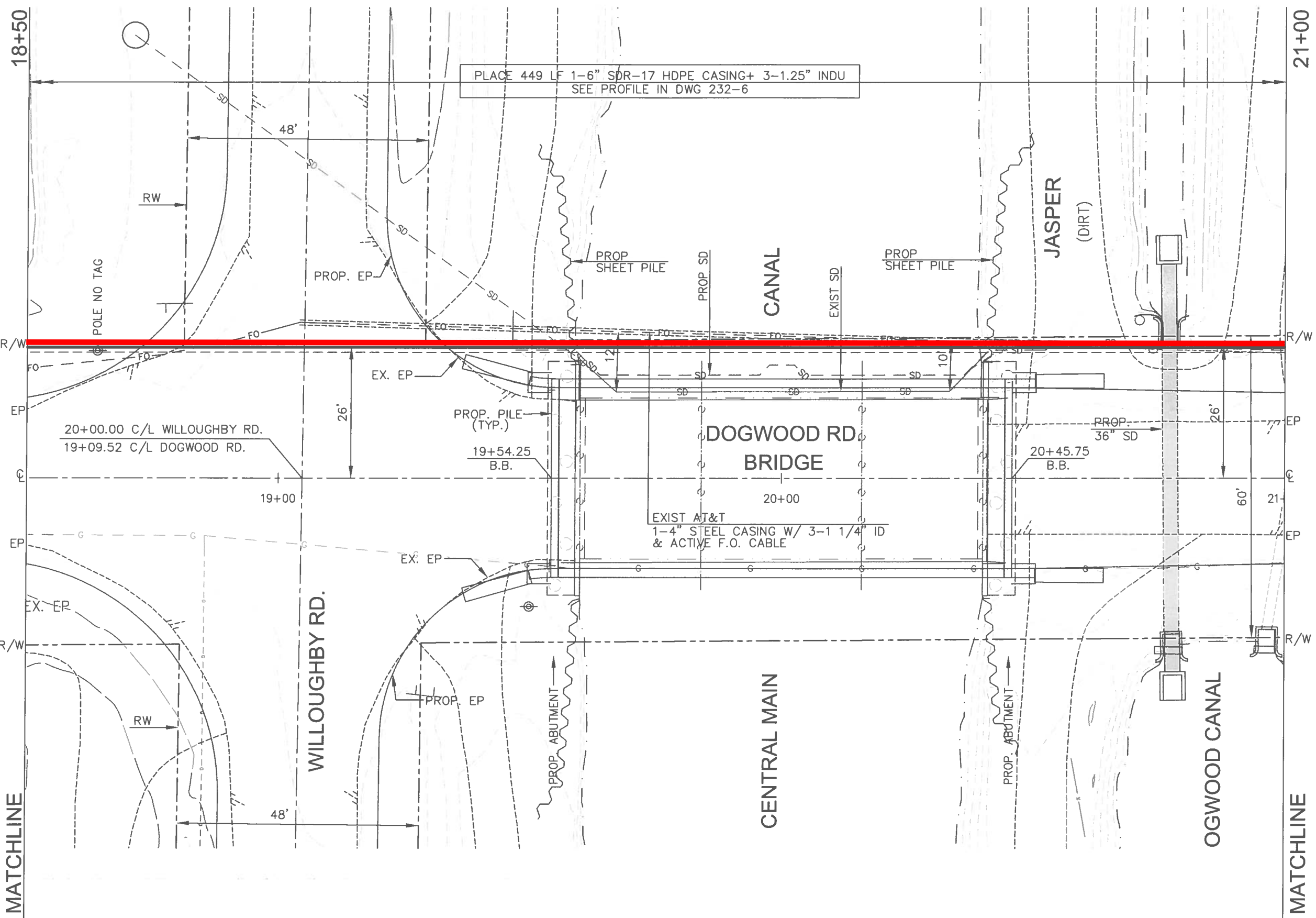
OWNERSHIP: ISD 100%
LINE CODE:
CABLE CLLI: SLTNC AU0010

SCALE: 1" = 20'

SALTON TO
CALEXICO, CA
417 Mb/s
LIGHTGUIDE SYSTEM
SALTON TO
CALEXICO
FTA CABLE

WR 34945-232-3





PLACE 449 LF 1-6" SDR-17 HDPE CASING+ 3-1.25" INDU
SEE PROFILE IN DWG 232-6

EXIST AT&T
1-4" STEEL CASING W/ 3-1 1/4" ID
& ACTIVE F.O. CABLE

REVISIONS:

NOTES:

**BORE PROFILE
SHT 5**

SEE DWG 232-3

SEE DWG 232-5

MATCHLINE

MATCHLINE



PREPARED FOR RECORD
APPROVED FOR TANYA HERNANDEZ
OUTSIDE PLANT ENGINEER DATE
FORKERT ENGINEERING &
SURVEYING, INC.
22311 BROOKHURST ST., SUITE 203
HUNTINGTON BEACH, CA 92646
PHONE: (714) 963-8793

PROPRIETARY
USE PURSUANT TO COMPANY INSTRUCTIONS
SPECIFICATION WR 34945
PROJECT NUMBER

OWNERSHIP: ISD 100%
LINE CODE:
CABLE CLLI: SLTNCAU0010

SCALE: 1" = 20'

SALTON TO
CALEXICO, CA
417 Mb/s
LIGHTGUIDE SYSTEM
SALTON TO
CALEXICO
FTA CABLE

WR 34945-232-4



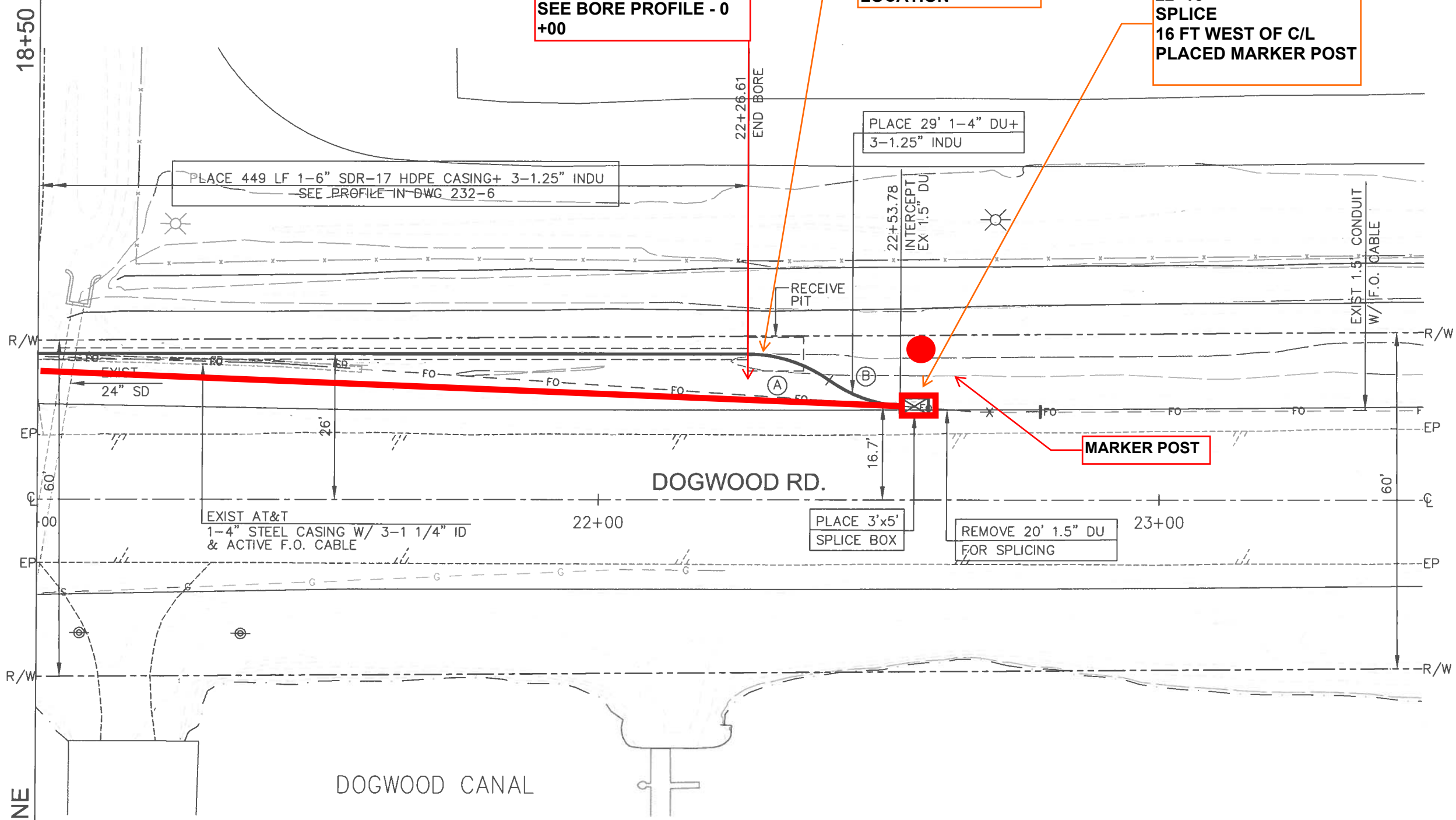
BORE PROFILE

START BORE
0+10 - 5.0
0+20 - 7.1
0+30 - 8.6
0+40 - 11.6
0+50 - 14.8
0+60 - 17.4
0+70 - 20.3
0+80 - 24.2
0+90 - 28.0
1+00 - 31.4
1+10 - 33.3
1+20 - 33.8
1+30 - 36.3
1+40 - 37.7
1+50 - 39.1
1+60 - 41.5
1+70 - 44.2
1+80 - 46.4
1+90 - 48.0
2+00 - 50.8
2+10 - 50.1
2+30 - 50.4
2+40 - 50.7
2+50 - 51.1
2+60 - 49.9
2+70 - 50.2
2+80 - 50.3
2+90 - 50.1
2+90 - 49.0
3+00 - 45.8
3+10 - 40.1
3+20 - 39.7
3+30 - 37.5
3+40 - 35.9
3+50 - 34.7
3+60 - 32.11
3+70 - 30.8
3+80 - 27.10
3+90 - 23.18
4+00 - 19.8
4+10 - 16.2
4+20 - 15.8
4+30 - 11.4
4+40 - 8.1
4+50 - 6.5
4+60 - 5.3
4+66 - 4.5
END OF BORE

**DIRECTIONAL BORE
1 - 2" ORANGE HDPE
DUCT
START / SOUTH
SEE BORE PROFILE - 0
+00**

**TRENCH 50 FT FROM
BORE TO SPLICE
LOCATION**

**3 ft x 5 ft BURIED VAULT
22+16
SPLICE
16 FT WEST OF C/L
PLACED MARKER POST**



PLACE 449 LF 1-6" SDR-17 HDPE CASING+ 3-1.25" INDU
SEE PROFILE IN DWG 232-6

PLACE 29' 1-4" DU+
3-1.25" INDU

22+53.78
INTERCEPT
EX 1.5" DU

EXIST 1.5" CONDUIT
W/ F.O. CABLE

RECEIVE
PIT

MARKER POST

DOGWOOD RD.

EXIST AT&T
1-4" STEEL CASING W/ 3-1 1/4" ID
& ACTIVE F.O. CABLE

PLACE 3'x5'
SPLICE BOX

REMOVE 20' 1.5" DU
FOR SPLICING

SEE DWG 232-4

MATCHLINE

DOGWOOD CANAL

CURVE	RADIUS	DELTA	LENGTH
(A)	25'	35°34'53"	15.53'
(B)	25'	31°10'36"	13.60'



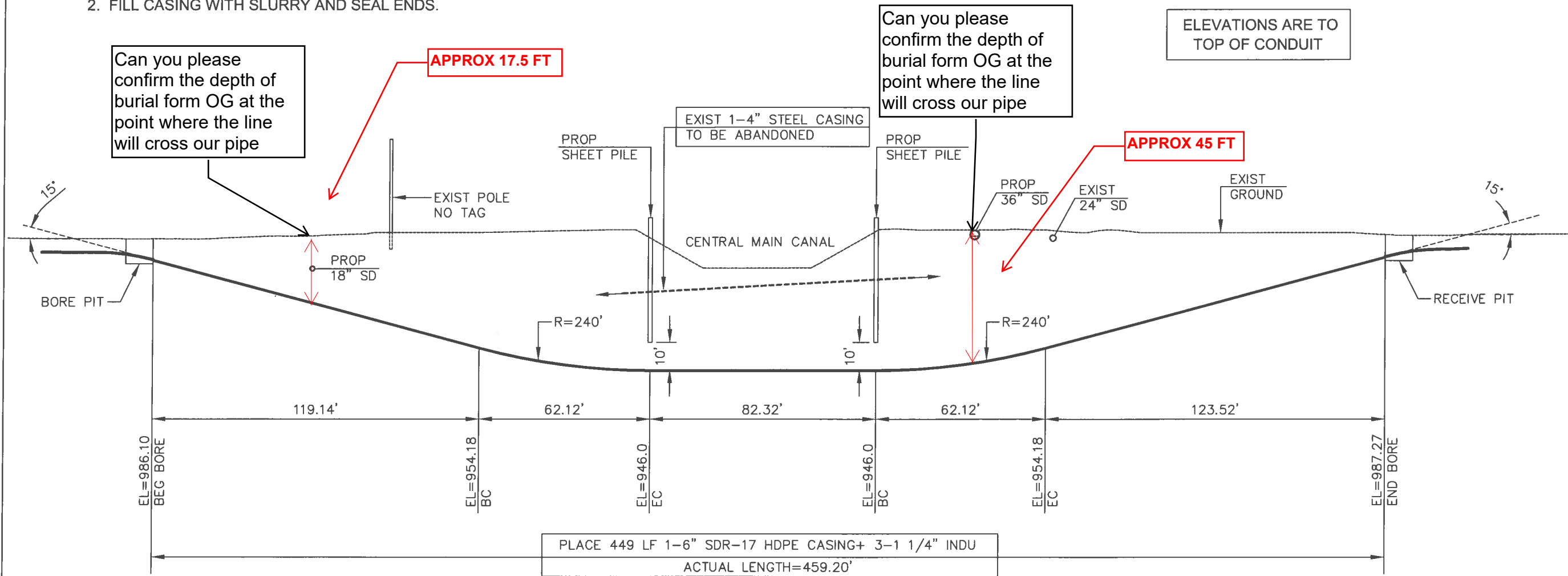
22311 BROOKHURST ST., SUITE 203
HUNTINGTON BEACH, CA 92646
PHONE: (714) 963-8793

PROPRIETARY
USE PURSUANT TO COMPANY INSTRUCTIONS
SPECIFICATION WR 34945
PROJECT NUMBER
OWNERSHIP: ISD 100%
LINE CODE:
CABLE CLLI: SLTNC AU0010

SCALE: 1" = 20'
SALTON TO
CALEXICO, CA
417 Mb/s
LIGHTGUIDE SYSTEM
SALTON TO
CALEXICO
FTA CABLE

BORING NOTES:

1. POTHOLE SUBSTRUCTURES AS REQUIRED DURING BORING OPERATIONS.
2. FILL CASING WITH SLURRY AND SEAL ENDS.



PROFILE

HORZ: 1"=40'
VERT: 1"=40'

REVISIONS:

NOTES:



PREPARED FOR RECORD

APPROVED FOR TANYA HERNANDEZ
OUTSIDE PLANT ENGINEER DATE

FORKERT ENGINEERING & SURVEYING, INC.
22311 BROOKHURST ST., SUITE 203
HUNTINGTON BEACH, CA 92646
PHONE: (714) 963-6793

PROPRIETARY
USE PURSUANT TO COMPANY INSTRUCTIONS
SPECIFICATION WR 34945
PROJECT NUMBER

OWNERSHIP: ISD 100%
LINE CODE:
CABLE CLU: SLTNC AU0010

SCALE: AS SHOWN

SALTON TO CALEXICO, CA
417 Mb/s
LIGHTGUIDE SYSTEM
SALTON TO CALEXICO
FTA CABLE

