



Public Works works for the Public



COUNTY OF
IMPERIAL

DEPARTMENT OF
PUBLIC WORKS

155 S. 11th Street
El Centro, CA
92243

Tel: (442) 265-1818
Fax: (442) 265-1858

Follow Us:



[www.facebook.com/
ImperialCountyDPW/](http://www.facebook.com/ImperialCountyDPW/)



[https://twitter.com/
CountyDpw/](https://twitter.com/CountyDpw/)

COUNTY OF IMPERIAL PUBLIC WORKS

Dogwood Road Bridge Replacement Over Central Main Canal, Br. No. 58C-0226

County of Imperial Project No. 6222

ADDENDUM NO. 4

April 19, 2022

This *ADDENDUM* is hereby made part of the Contract Documents and specifications to the same extent as if originally included therein, and shall be signed by the Bidder and included with the proposal.

1. **Question:** “On sheet S-1 of the plans note 12 – OH line to be relocated by others – will this be done before pile installation is to begin?”

Response: IID Energy Overhead Power Lines will be relocated by IID prior to pile installation. Note that the Optical Ground Wire (OPGW) on the Transmission Power Line is to remain in place during construction of new bridge. The OPGW is not to be relocated along the shoe fly line.

Information on the OPGW (communication cable), approximate location, and clearances are hereby attached and entitled: “Addendum No. 4 – Attachment A”. Note that location and clearances are estimates and are **for bidding purposes only**.

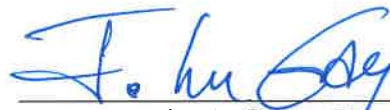
2. **Question:** “Does the County have a site or material available for the import borrow required for the project?”

Response: The existing dirt pile located on the southeast region of the Lack Road Bridge over the New River will be made available to the contractor for imported borrow. However, the County of Imperial does not guarantee the quantity available or the quality of the material. The Contractor is required to test material to ensure it meets the requirements of the Special Provisions and Standard Specifications. Bidder’s attention is directed to Section 6 “Control of Materials” and Section 19 “Earthwork” of the Special Provisions and Standard Specifications. Contractor to submit analytical test results to the Department for review and approval. Do not place material until authorized. Contractor to coordinate with the Department prior to excavation of material for imported borrow.

3. **CLARIFICATION:** Preliminary Valmont Steel Bridge Shop Drawings (Order Number 529039-P1) included in the “Informational Handout” are for **Bidding and Informational Use Only**. A final set of approved shop drawings will be provided to the successful bidder.

The Preliminary Shop Drawings are available at Imperial County Public Works Department’s website under “Projects Out to Bid” at:

<https://publicworks.imperialcounty.org/projects-out-to-bid/>



John A. Gay, P.E.
Director of Public Works

Acknowledgement of Addendum No. 4

The general contractor is responsible for advising any and all subcontractors of this change. Each bidder must acknowledge receipt of this addendum in the noted space below and where indicated on the Bidder’s Proposal Section of the Special Provisions. This Addendum must be attached to the proposal.

License No: _____

Print or Type Company Name: _____

Print or Type Authorized Name: _____

Authorized Signature of Contractor: _____

Date Signed: _____

Dogwood Road Bridge Replacement Over Central Main Canal, Br. No. 58C-0226

County of Imperial Project No. 6222

ATTACHMENTS FOR ADDENDUM NO. 4

ADDENDUM NO. 4 - ATTACHMENT A

INFORMATION ON OPTICAL GROUND WIRE (COMMUNICATION CABLE/WIRE) ON THE IID TRANSMISSION POWER LINE AT DOGWOOD BRIDGE

Imperial Irrigation District (IID) Power, the local power utility company operates an existing Transmission Power Line along the east side of the Dogwood Bridge. IID Power is to relocate the existing 92 KV and 12.5 KV Transmission Power Line (shoe fly along east side) for facilitating construction of new bridge at Dogwood Road over the Central Main Canal.

It is noted that the communication cable/wire called the optical ground wire (OPGW) located on the uppermost position of the Transmission Power Line is to remain in place during construction of new bridge. The OPGW is not to be relocated along the Shoe Fly Transmission Line. The diameter of OPGW is 0.528 inches. The OPGW serves two purposes, it is placed in the topmost position of a transmission line where it "shields" the conductors from lightning; and provides a telecommunications path for internal communications. This wire is not energized.

See attached Exhibit 1 providing the current height of the OPGW from the existing ground level, prior to the relocation of the Transmission Power Line.

Exhibit 2 shows the position/orientation of the OPGW on completion of relocation of the Transmission Power Line. The new power poles installed at each end of the Shoe Fly Transmission Line are to be 80 feet in height instead of existing 70 feet power pole height.

Per the estimate provided by IID Power, the clearance of the OPGW from existing ground level is about 61-feet at mid-span between the two 80 feet power poles (No. 2 and No. 8, see Exhibit 2) with a span of 290 feet. Note this clearance is an estimate provided for bidding purposes only. The actual sag will be calculated once the Shoe Fly Transmission Line is in place. Subsequently the accurate measurement of the clearance to ground from OPGW will be calculated and provided to the successful bidder. The successful bidder is to verify the real clearance to the OPGW prior to commencing piling operations.

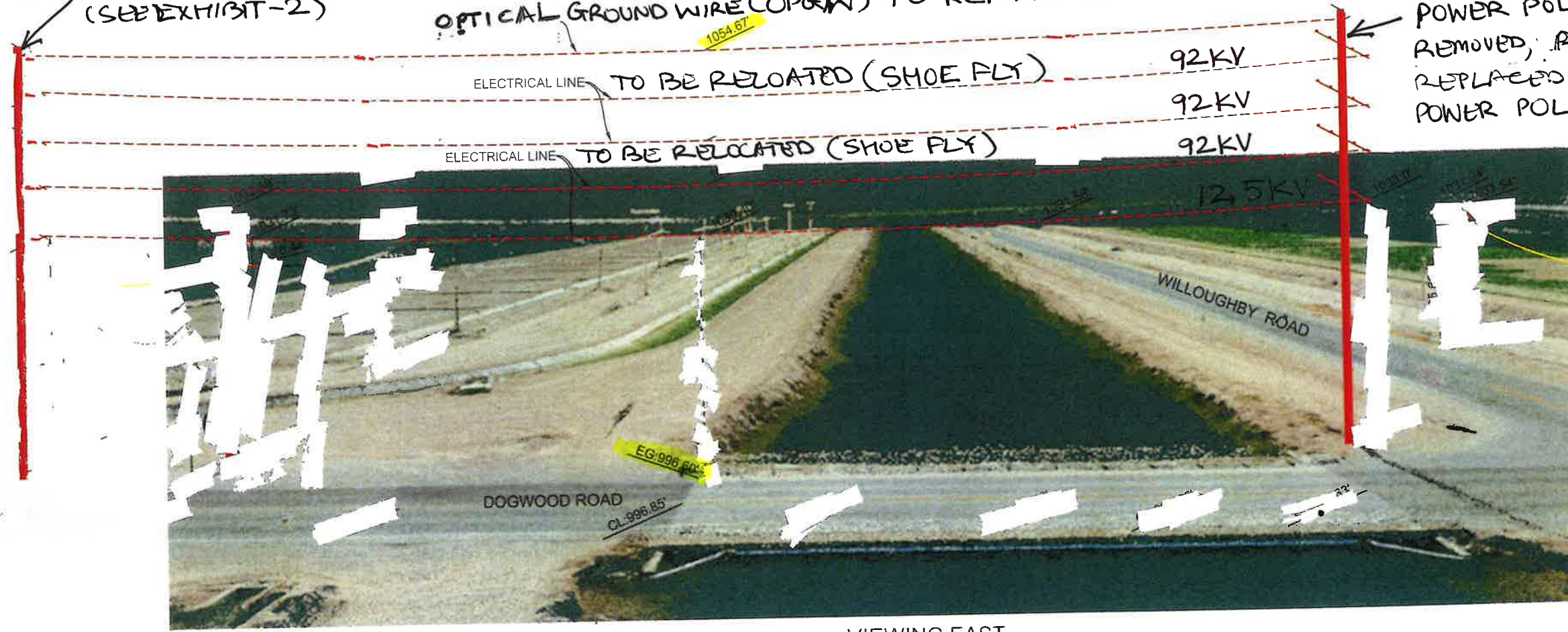
Exhibit 3 provides the location of the OPGW along the Bridge at Dogwood Road.

IID Power is currently working (started week of March 28) on the Shoe Fly Transmission Power Line relocation at the Dogwood Bridge. IID Power is scheduled to be completed the week of May 23.

EXISTING 70-FT POWER POLE TO BE REMOVED + REPLACED WITH 80-FT POWER POLE (SEE EXHIBIT-2)

OPTICAL GROUND WIRE (OPGW) TO REMAIN IN PLACE

EXISTING 70-FT POWER POLE TO BE REMOVED, RELOCATED + REPLACED WITH 80-FT POWER POLE

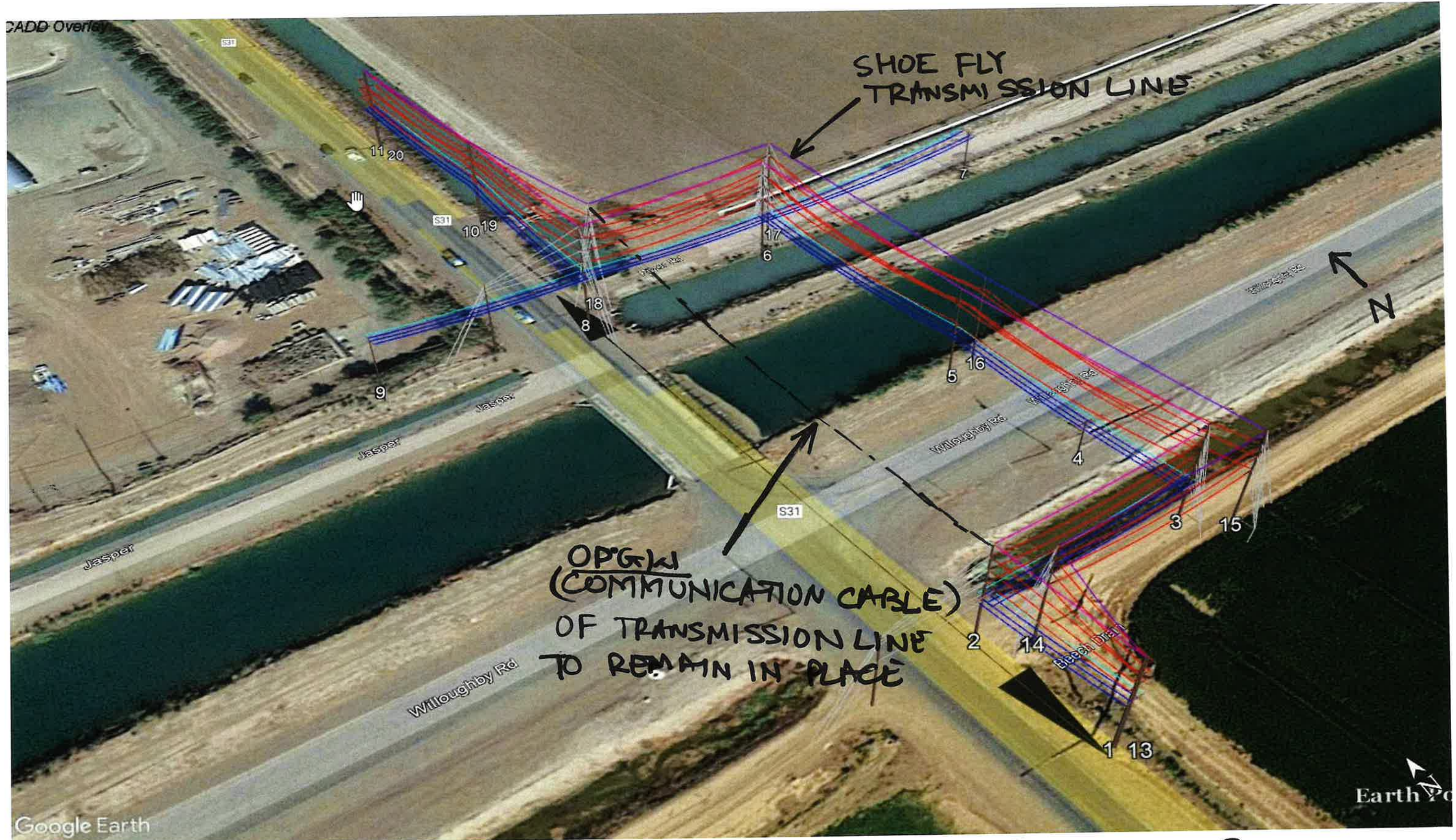


VIEWING EAST

EXHIBIT 1

NTS

DATE OF SURVEY: JUNE 1, 2021

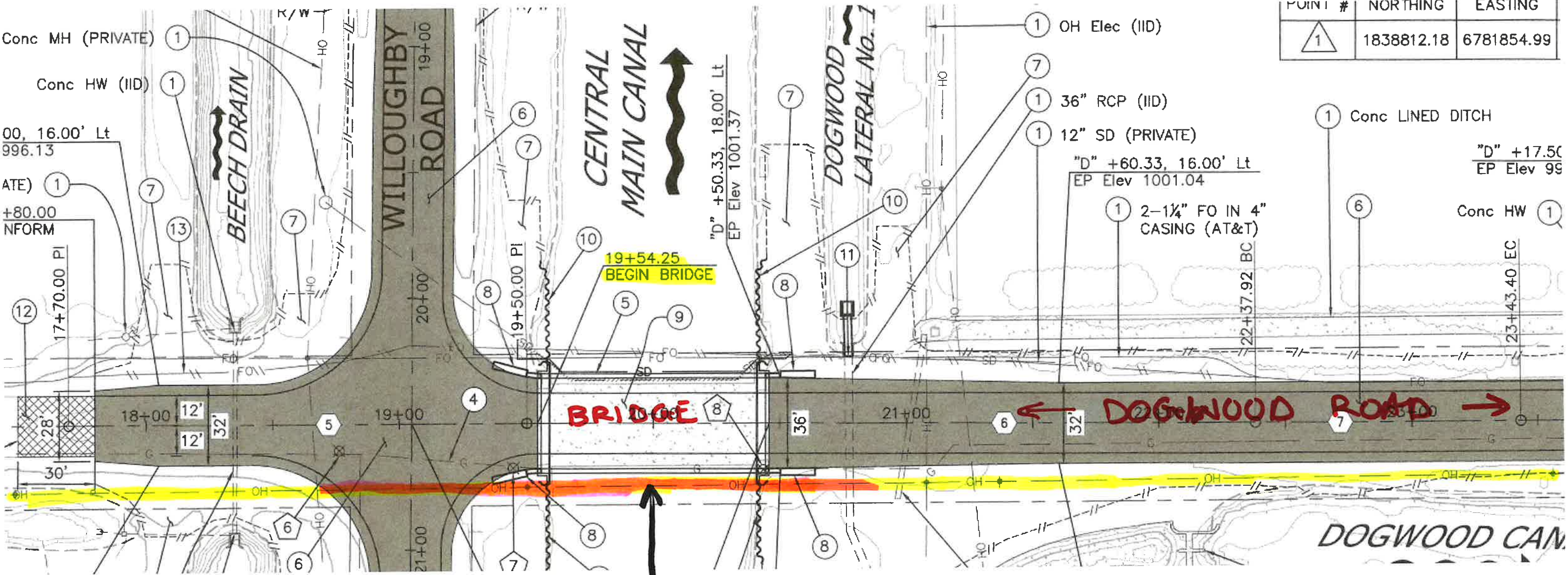


OP'GW
(COMMUNICATION CABLE)
OF TRANSMISSION LINE
TO REMAIN IN PLACE

SHOE FLY
TRANSMISSION LINE

EXHIBIT-2
NTS

POINT #	NORTHING	EASTING
1	1838812.18	6781854.99



LOCATION OF OPGW ON TRANSMISSION POWERLINE

→ N

EXHIBIT-3

NTS