



Public Works works for the Public



COUNTY OF  
IMPERIAL

DEPARTMENT OF  
PUBLIC WORKS

155 S. 11th Street  
El Centro, CA  
92243

Tel: (442) 265-1818  
Fax: (442) 265-1858

Follow Us:



www.facebook.com/  
ImperialCountyDPW/



https://twitter.com/  
CountyDpw/

## COUNTY OF IMPERIAL PUBLIC WORKS

**Dogwood Road Bridge Replacement Over Central Main Canal, Br. No. 58C-0226**

**County of Imperial Project No. 6222**

### ADDENDUM NO. 2

**April 8, 2022**

This *ADDENDUM* is hereby made part of the Contract Documents and specifications to the same extent as if originally included therein, and shall be signed by the Bidder and included with the proposal.

1. **THE PROJECT PLANS HAVE BEEN REVISED.** Bidders are directed to use the new set of plans entitled:

**DOGWOOD ROAD BRIDGE REPLACEMENT OVER CENTRAL MAIN CANAL,  
BR. NO. 58C-0226, COUNTY PROJECT NO. 6222**

The new set of plans are available at Imperial County Public Works Department's website under "Projects Out to Bid" at:

<https://publicworks.imperialcounty.org/projects-out-to-bid/>

It is recommended that original set of plans be destroyed to avoid any confusion.

2. **REMOVE Sheet 8 "Traffic Control / Detour Plan" from the Revised Project Plans.** Bidders are directed to use the new Traffic Control Plan which will be provided in an upcoming addendum.
3. **ADD THE FOLLOWING TO THE "INFORMATIONAL HANDOUT":** As-Built Plans of the Existing Dogwood Road Bridge (Document No. A0006351)

The As-Built Plans are available at Imperial County Public Works Department's website under "Projects Out to Bid" at:

<https://publicworks.imperialcounty.org/projects-out-to-bid/>

4. **ADD THE FOLLOWING TO THE "INFORMATIONAL HANDOUT":** SoCal Gas Proposed Relocation Plans titled, "SL 41-6000-2 Relocation Dogwood Road & Willoughby; City of El Centro, Imperial County; WOA 90850" to the "Informational Handout". Please Note, these are 90 Percent completed plans and are not to be use for construction; **Plans are for Informational Use Only.**

The SoCal Gas Proposed Relocation Plans are available at Imperial County Public Works Department's website under "Projects Out to Bid" at:

<https://publicworks.imperialcounty.org/projects-out-to-bid/>

5. **ADD THE FOLLOWING TO THE "INFORMATIONAL HANDOUT":** AT&T Relocation As-Built Plans titled, "Relocation of Conduits and Cables Dogwood Rd Near Willoughby Rd; County of Imperial, CA (WR 34945)" to the "Informational Handout".

The AT&T Relocation As-Built Plans are available at Imperial County Public Works Department's website under "Projects Out to Bid" at:

<https://publicworks.imperialcounty.org/projects-out-to-bid/>

6. **ADD THE FOLLOWING TO THE "INFORMATIONAL HANDOUT":** IID Energy Transmission Line Shoe Fly Plans titled, "PW/ED 92kV Transmission Line Shoe Fly; Dogwood Road Bridge Construction" to the "Informational Handout".

The IID Energy Transmission Line Shoe Fly Plans are available at Imperial County Public Works Department's website under "Projects Out to Bid" at:

<https://publicworks.imperialcounty.org/projects-out-to-bid/>

7. **Regarding Construction Keynote No. 5 on Plan Sheet 4 (Reference – PP-1)**

The construction keynote stating, "PRIVATE STORM DRAIN LINE TO BE RELOCATED BY OTHERS." shall be deleted and replaced with "RELOCATE PRIVATE STORM DRAIN PIPELINE PER DETAILS." Details of the relocation of the storm drain pipeline is hereby attached and entitled: "Addendum No. 2 – Attachment A".

Full compensation for furnishing all labor, materials, tools, equipment and incidentals, and for doing all the work in the removal and installation of the 6-inch storm drain pipeline, shall be considered as included in the contract price paid per lump sum for "Remove and Install Storm Drain Line" and no separate or additional payment shall be considered therefor.

8. **REPLACE the Bid Item List (Pages 2 and 3 of Notice to Bidders) with the revised Bid Item List hereby attached.**
9. **REPLACE DIVISION XIV – DOCUMENTS TO BE EXECUTED BY BIDDER with attached pages.**
10. **REPLACE Minimum Insurance Amounts (Pages 92 of the Special Provisions) with the revised Minimum Insurance Amounts attached.**

**11. REPLACE SECTION 1-1.01 on Page 11 with the Following SPECIAL PROVISIONS:**

**Add to section 1-1.01:**

The work embraced herein shall be done in accordance with the Standard Specifications dated May 2018 and the Standard Plans dated May 2018, of the Department of Transportation insofar as the same may apply, the project plans and these special provisions. The special provisions shall take precedence over and be used in lieu of the conflicting portions.

Amendments to the Standard Specifications set forth in these special provisions shall be considered as part of the Standard Specifications for the purposes set forth in Section 5-1.02, "Contract Components," of the Standard Specifications. Whenever either the term "Standard Specifications is amended" or the term "Standard Specifications are amended" is used in these special provisions, the indented text or table following the term shall be considered an amendment to the Standard Specifications. In case of conflict between such amendments and the Standard Specifications, the amendments shall take precedence over and be used in lieu of the conflicting portions.

**Bid Items and Applicable Sections**

Item code	Item description	Applicable section
050000A	LAND SURVEYING	5
390132A	ASPHALT CONCRETE PAVEMENT	39
550023A	ERECT PREFABRICATED STEEL BRIDGE	55
820841A	LED SOLAR POWERED FLASHING STOP SIGN SYSTEM	82
839600A	ALTERNATIVE CRASH CUSHION SYSTEM	83
839743A	CONCRETE BARRIER (TYPE 836B MODIFIED)	83

**12. ADD THE FOLLOWING SPECIAL PROVISIONS TO DIVISION VI STRUCTURES, SECTION 55 STEEL STRUCTURES**

**Delete section 55-1.01D(4)**

**13. REPLACE SECTION 55-2 on Page 61 with the Following SPECIAL PROVISIONS:**

**Replace section 55-2 with:**  
**55-2 PREFABRICATED STEEL BRIDGE**

**55-2.01 GENERAL**

**55-2.01A Summary**

Section 55-2 includes specifications for erecting a prefabricated steel bridge.

Erect prefabricated steel bridge includes erecting a prefabricated steel bridge at the job site into final position in the work.

The prefabricated steel bridge is a fully-engineered simple span Valmont U-Beam Bridge System Type U30x131. The Valmont U-Beam Bridge System consists of steel press-brake formed tub girder (PBFTG) elements designed, load rated, and manufactured according to the plans and these special provisions. The PBFTG is produced by the following manufacturer:

Contact	Telephone and e-mail.
VALMONT INDUSTRIES, INC. - NORTH AMERICAN STRUCTURES GUY C. NELSON, P.E., S.E. PRODUCT DEVELOPMENT DIRECTOR	Telephone: (616) 813-8514 E-mail: guy.nelson@valmont.com

The prefabricated steel bridge includes bearing plates and pads, shear studs, metal deck plates, bolts, washers, welding, welding materials, and hardware as required. The manufacturer provides the approved shop drawings, calculations, and load ratings for the prefabricated steel bridge.

**55-2.01B Definitions**

Not Used

**55-2.01C Submittals**

Provide a detailed erection plan and setting sequence.

**55-2.01D Quality Assurance**

Not Used

**55-2.02 MATERIALS**

Not Used

**55-2.03 CONSTRUCTION**

**55-2.03A General**

Install the prefabricated steel bridge according to the approved erection plan and procedures.

Verify all dimensions and geometry of the new structure in the field as necessary for proper fit of the proposed construction.

**55-2.03B Handling and Storing Materials**

Store structural steel material on platforms, skids, or other supports above high-water elevations. Maintain materials free of dirt, oil, or other contaminants and protect from corrosion. Pad structural steel members in storage at points of contact. Pitch trough sections to provide drainage. Support long members at frequent intervals to prevent deflection. Handle, store, and brace members in the erected position to avoid distortion, unless otherwise authorized.

Handle fabricated structural steel members and primary components of main members with clamps or plate hooks that do not leave nicks, gouges, or depressions. Repair damage to main members using approved methods. Use rigging in accordance with the approved shop drawings. Repair damage consistent with the delivery of structural steel in accordance with ASTM A6/A6M and AWS D1.5. Do not use chains or chokers for handling structural steel, unless placing a protective shield (softener) between the chain or choker and the structural steel.

Minimize handling stresses on beams during transportation, storage, and erection. Comply with the rigging requirements in the following table:

Condition	Maximum distance, feet
Overhang for 1-point or 2-point pickup	35
Distance between hooks for 2-point pickup	70

**55-2.03C Shipping**

The manufacturer ships the prefabricated steel bridge. The mode of delivery shall be the option of the manufacturer. Delivery shall be limited to the hours between 8:00 am and 5:00 pm on weekdays only, excluding any holidays, unless otherwise approved by the Engineer. You are responsible for coordination of movement of the prefabricated steel bridge within the contract limits and are responsible for all demurrage charges. At your option and expense, the prefabricated steel bridge may be requested at times other than the stated time.

Provide the manufacturer and Engineer with a schedule for shipping the prefabricated steel bridge to the job site within 30 days after Contract approval. The schedule must include the order items are to be received and their orientation for delivery. You are responsible for receiving, unloading, storing, and protecting the prefabricated steel bridge in accordance with this schedule. If you elect to change the schedule, you are responsible for coordinating the change with the manufacturer and for all costs and time delays associated with such changes.

**55-2.03D Erection**

Before beginning work, obtain approval for proposed equipment and erection methods. Do not erect the prefabricated superstructure units until they are inspected for damage

at the job site by the Engineer. Do not use material intended for the finished structure for erection or temporary purposes, unless otherwise shown.

The Engineer's approval does not relieve you of the responsibility for the safety of the method or equipment.

Position bearing pads with a full, uniform bearing on the substructure concrete. Adjust bearing pad positions to compensate for temperature at the time of erection.

Position beams on the substructure. Shim bearing pads to provide full bearing contact with the bottom of the beam. Rigidly block beams in place before beginning deck and diaphragm forming.

The Engineer inspects the prefabricated superstructure units for damage after being set in place and prior to installing forms for the bridge deck and backwall joints. Repair damage noted by the Engineer.

Fill any formed holes provided in the bridge deck to accommodate rigging used to facilitate lifting the prefabricated bridge substructure units with non-shrink grout. Non-shrink grout must comply with the requirements listed in the shop drawings.

#### **55-2.03E Assembly 55-2.03E(1) General**

Assemble parts according to the plans and approved shop drawings. Do not damage structural steel during erection. Clean rust, loose mill scale, dirt, oil or grease, and other deleterious material from bearing surface and surfaces in permanent contact before assembly.

#### **55-2.03E(2) Bolted Splice Assembly**

Assemble individual spliced members of each PBFTG one time.

A high-strength bolt assembly consists of one high-strength bolt, one heavy hex nut, one hardened circular washer, and one lock washer where required. Provide a high-strength bolt assembly for each hole in the connection of structural joints.

Install a hardened circular washer under the end of the high-strength bolt assembly (head or nut) rotated during tightening. Additionally, install hardened circular washers to cover oversized holes where required in the outer piles of the structural joint.

Bolts used in bottom flange field splices must be positioned with the head on the bottom side of the bottom flange and the nut on the top side of the bottom flange. Likewise, bolts in the fascia member must be positioned with the head on the outside (fascia) of the structure and the nut on the interior side of the structure.

Tighten all permanent bolts using the turn-of-nut (TON) method per Research Council on Structural Connections (RCSC) requirements for slip critical connections.

Provide heavy, semi-finished, hexagonal nuts with one circular washer for each bolt. Lubricate galvanized nuts with a lubricant with a visible dye. Supply two washers for oversized holes, one under each element. Supply 5 percent more high strength steel bolts of each size and length than required.

Protect fasteners from dirt and moisture on the project. Remove only the number of fasteners required to be installed and tightened during a working shift. Lubricant must not be removed from fasteners. Visible corrosion or contamination is a cause for rejection of the fasteners.

#### **55-2.03F Repair of Field Damaged Galvanized Surfaces**

Exposed underlying steel or coating thickness less than 50 percent of the specified thickness or thickness equivalent is considered damage.

Thickness equivalent is 2.3 ounces of zinc per square foot, or 3.9 mils.

Use zinc-rich primer, or zinc metallizing in accordance with ASTM A780/A780M.

#### **55-2.04 PAYMENT**

Full compensation for furnishing all labor, materials, tools, equipment and incidentals, and for doing all the work involved in erecting a prefabricated steel bridge must be considered as included in the contract price paid per lump sum for "Erect Prefabricated Steel Bridge" and no separate or additional payment will be considered therefor.

**14. Question:** "Is a bid bond required to be submitted with bid?"

**Response:** No, a bid bond is not required to be submitted with this bid.

**15. Question:** "Who is responsible for QC/Testing?"

**Response:** This Department will provide QC for materials, soil, piling operations, and bridge fabrication.

**16. Question:** "Please confirm the contractor is to bid 5-day work week at 8 hrs/day and 7-day work week at 12 hrs/day."

**Response:** Confirmed, contractor shall bid for a 5-day work week at 8 hrs/day and 7-day work week at 12 hrs/day.

**17. Question:** "Will the contractor be required to perform a survey for nesting birds, or is the County covering?"

**Response:** Contractor is required to perform a survey for nesting birds and burrowing owl. Pre-construction survey for nesting birds and burrowing owls is to be conducted by a qualified biologist. Please refer to Section 14 "Environmental Stewardship" of the Special Provisions.

**18. Question:** "Bid Item #21 is "Furnish and Install Prefabricated Steel Bridge". Please confirm that the Contractor is only installing the bridge"


**Response:** Bid Item #21 has been revised. Please see revised Bid Item List and Section 55 Steel Structures hereby included in this Addendum. Contractor will accept delivery and ownership of bridge on-site upon delivery.

**19. Question:** "It was mentioned in the pre-bid meeting that the County will have Dynamic Consulting onboard to do surveying throughout the project? If that is the case, what will be required by the Contractor?"

**Response:** Contractor is to provide surveying in accordance to sections 5-1.24 and 5-1.36D of the Special Provisions.

**20. Question:** "Will grind & groove of the bridge deck be required?"

**Response:** Yes, please refer to Section 42 "Groove and Grind Concrete" of Caltrans Standard Specifications, Division V "Surfacings and Pavements".

  
\_\_\_\_\_  
John A. Gay, P.E.  
Director of Public Works

**Acknowledgement of Addendum No. 2**

**The general contractor is responsible for advising any and all subcontractors of this change. Each bidder must acknowledge receipt of this addendum in the noted space below and where indicated on the Bidder's Proposal Section of the Special Provisions. This Addendum must be attached to the proposal.**

License No: \_\_\_\_\_

Print or Type Company Name: \_\_\_\_\_

Print or Type Authorized Name: \_\_\_\_\_

Authorized Signature of Contractor: \_\_\_\_\_

Date Signed: \_\_\_\_\_



**Dogwood Road Bridge Replacement Over Central Main Canal, Br. No. 58C-0226**

**County of Imperial Project No. 6222**

**ATTACHMENTS FOR ADDENDUM NO. 2**

## ADDENDUM NO. 2 - ATTACHMENT A

### **THE DETAILS OF REMOVAL AND INSTALLATION OF 6-INCH STORM DRAIN PIPELINE IS AS UNDER: -**

- I. Dogwood Properties (owner of the 6-inch storm drain pipeline) is to submit an encroachment permit application to IID for the relocation of the 6-inch storm drain pipeline.
  
- II. The contractor for the new bridge will be responsible for the following construction tasks of the 6-inch storm drain pipeline:
  - a. Excavate and expose the existing 6-inch storm drain pipeline (underground) on the north side and south side of the bridge. See attached exhibit and pictures of storm drain pipeline work completed at bridge in 2012.
  - b. Plug the existing storm drain pipeline on both the north and south side of the bridge for the duration of time required for installation of new bridge.
  - c. Remove and dispose of the existing 6-inch storm drain pipeline along the west edge of the existing bridge, as part of the existing bridge's demolition.
  - d. Install new 6-inch storm drain pipeline along the west edge of the new bridge. The new storm drain pipeline shall be C-900 with mechanical joint restraints at every joint, and ductile iron fittings. The new pipe is to be painted before installation. The new pipe is to be anchored along the west edge of the concrete barrier at the bridge per attached bracing details.
  - e. Connect the new 6-inch storm drain pipeline to the existing storm drain pipeline on the north and south side of the new bridge (field fit the new pipe to the existing pipe).
  - f. On completion of installation, the new pipeline section is to be tested for leaks by the contractor, in coordination with the owner (Dogwood Properties), by operating the storm drain pumps.

SUBJECT

JOB NO.

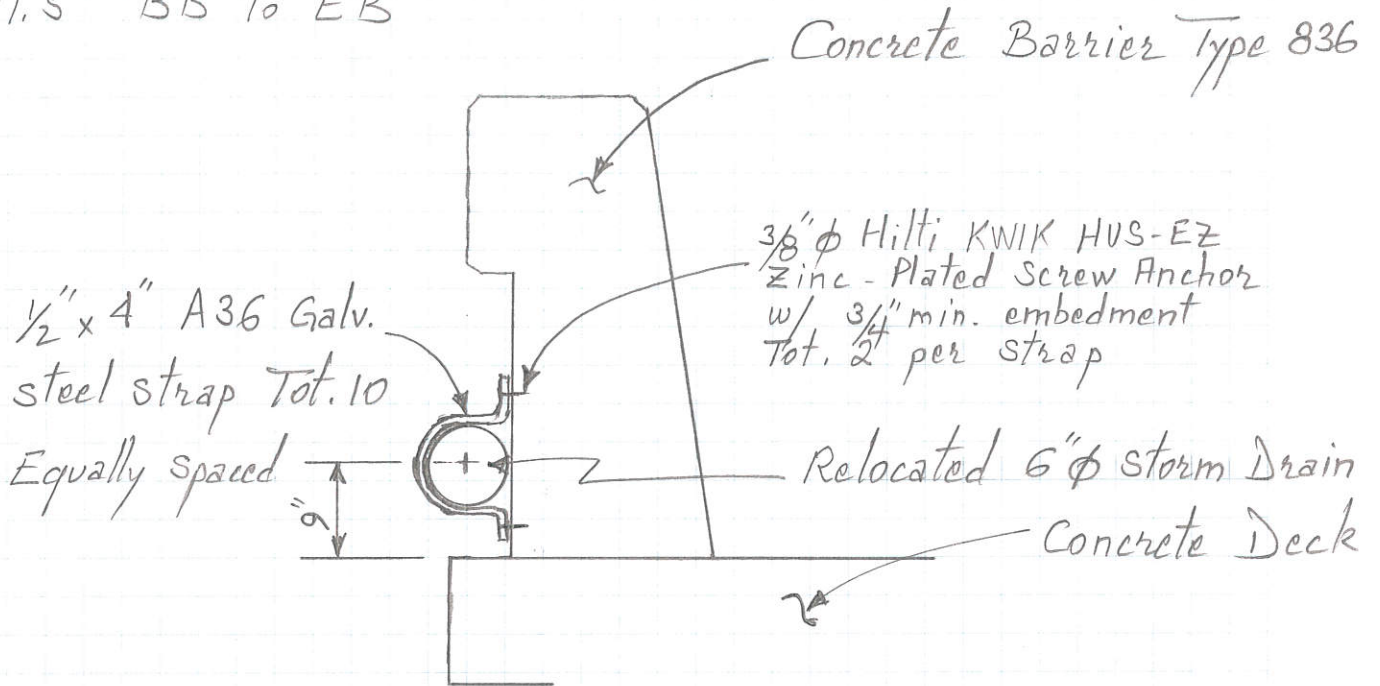
DATE

DESIGNED BY

CHECKED BY

NV5  
BEYOND ENGINEERING

91.5' BB to EB



14+00 15+00 16+00 17+00 18+00 19+00 20+00 21+00 22+00 23+

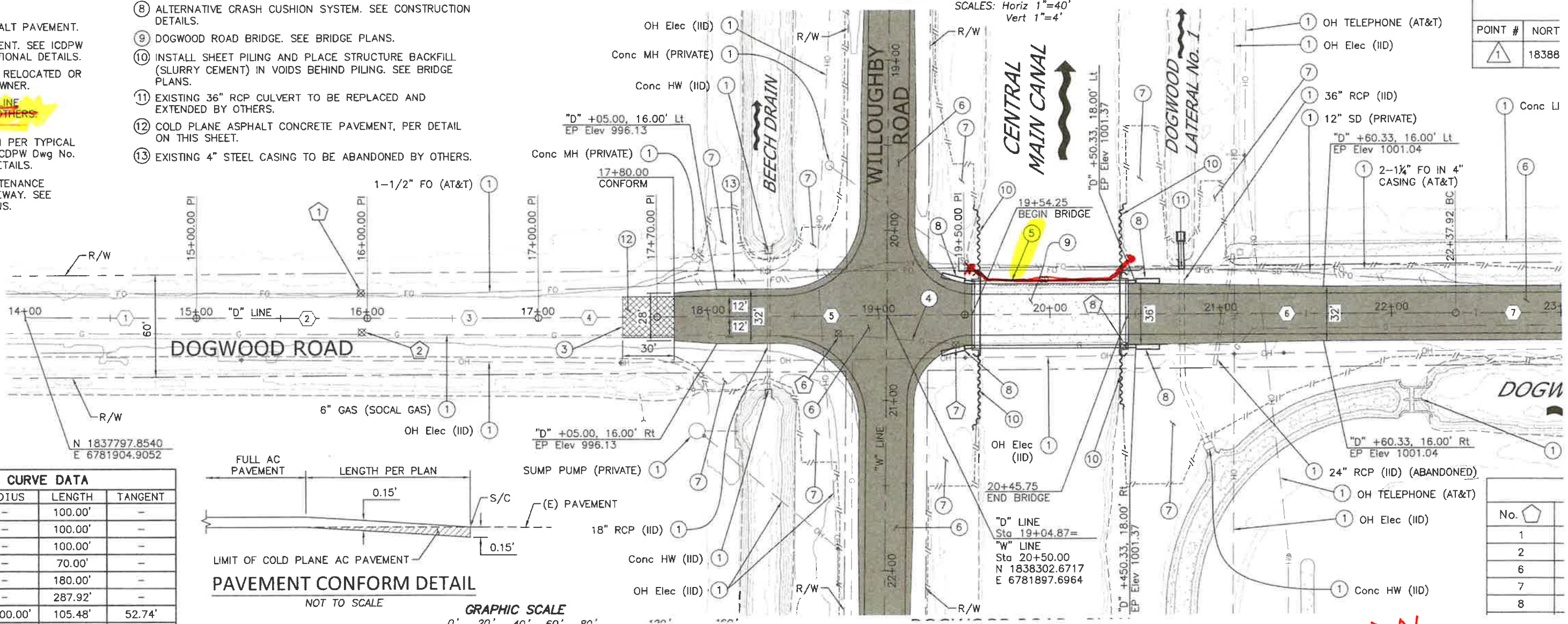
**DOGWOOD ROAD - PROFILE**

SCALES: Horiz 1"=40'  
Vert 1"=4'

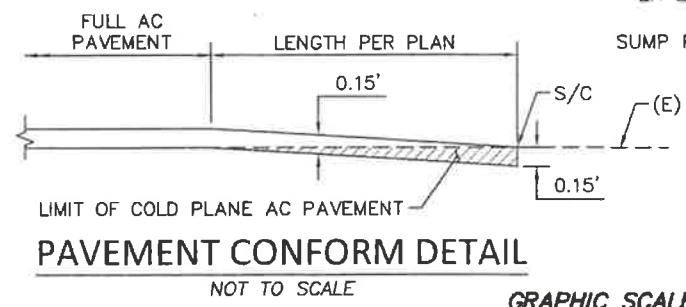
**CONSTRUCTION NOTES**

- 1) PROTECT IN PLACE.
- 2) SAWCUT EXISTING ASPHALT PAVEMENT.
- 3) MATCH EXISTING PAVEMENT. SEE ICDPW Dwg No. 453 FOR ADDITIONAL DETAILS.
- 4) EXISTING UTILITY TO BE RELOCATED OR ADJUSTED BY UTILITY OWNER.
- 5) PRIVATE STORM DRAIN LINE TO BE RELOCATED BY OTHERS.
- 6) NEW PAVEMENT SECTION PER TYPICAL CROSS SECTIONS. SEE ICDPW Dwg No. 440 FOR ADDITIONAL DETAILS.
- 7) GRADED RAMP TO MAINTENANCE ACCESS ROAD OR DRIVEWAY. SEE TYPICAL CROSS SECTIONS.
- 8) ALTERNATIVE CRASH CUSHION SYSTEM. SEE CONSTRUCTION DETAILS.
- 9) DOGWOOD ROAD BRIDGE. SEE BRIDGE PLANS.
- 10) INSTALL SHEET PILING AND PLACE STRUCTURE BACKFILL (SLURRY CEMENT) IN VOIDS BEHIND PILING. SEE BRIDGE PLANS.
- 11) EXISTING 36" RCP CULVERT TO BE REPLACED AND EXTENDED BY OTHERS.
- 12) COLD PLANE ASPHALT CONCRETE PAVEMENT, PER DETAIL ON THIS SHEET.
- 13) EXISTING 4" STEEL CASING TO BE ABANDONED BY OTHERS.

POINT #	NORT
1	18388



LINE AND CURVE DATA				
NO	DELTA/BEARING	RADIUS	LENGTH	TANGENT
1	N 00°28'29" W	-	100.00'	-
2	N 00°38'43" W	-	100.00'	-
3	N 00°49'58" W	-	100.00'	-
4	N 01°09'06" W	-	70.00'	-
5	N 01°01'01" W	-	180.00'	-
6	N 00°47'15" W	-	287.92'	-
7	Δ=00°36'16"	10,000.00'	105.48'	52.74'



**NTS**

**EXHIBIT**  
**STORM-DRAIN PIPELINE RELOCATION**



No.	Symbol
1	Circle with 1
2	Circle with 2
6	Circle with 6
7	Circle with 7
8	Circle with 8



2012/02/27



2012/02/27



2012/02/27



2012/02/27





2012/02/27

**BID ITEM LIST**

Item No.	Item Code	Item Description	Unit of Measure	Estimated Quantity
1	050000A	LAND SURVERYING	LS	1
2	070030	LEAD COMPLIANCE PLAN	LS	1
3	120100 120900 128652	TEMPORARY TRAFFIC CONTROL	LS	1
4	130100 130200 130300 130310 130320 130330	WATER POLLUTION CONTROL	LS	1
5	170103	CLEARING AND GRUBBING (LS)	LS	1
6	190101	ROADWAY EXCAVATION	CY	930
7(F)	192003	STRUCTURE EXCAVATION (BRIDGE)	CY	42
8(F)	193003	STRUCTURE BACKFILL (BRIDGE)	CY	36
9(F)	193006	STRUCTURE BACKFILL (SLURRY CEMENT)	CY	375
10	198010	IMPORTED BORROW (CY)	CY	1,270
11	260203	CLASS 2 AGGREGATE BASE (CY)	CY	2,640
12	390132A	ASPHALT CONCRETE PAVEMENT	TON	1,080
13	398200	COLD PLANE ASPHALT CONCRETE PAVEMENT	SQYD	340
14	490380	SHEET PILING	SQFT	12,590
15	495124	FURNISH 30" CAST-IN-STEEL SHELL CONCRETE PILING	LF	785
16	495125	DRIVE 30" CAST-IN-STEEL SHELL CONCRETE PILE	EA	12
17(F)	510053	STRUCTURAL CONCRETE, BRIDGE	CY	75
18(F)	510054	STRUCTURAL CONCRETE, BRIDGE (POLYMER FIBER)	CY	99
19	519088	JOINT SEAL (MR 1")	LF	79
20(F)	520102	BAR REINFORCING STEEL (BRIDGE)	LB	64,629
21	550203A	ERECT PREFABRICATED STEEL BRIDGE	LS	1
22	600114	BRIDGE REMOVAL (PORTION)	LS	1

Item No.	Item Code	Item Description	Unit of Measure	Estimated Quantity
23(F)	750501	MISCELLANEOUS METAL (BRIDGE)	LB	2,046
24	820610	RELOCATE ROADSIDE SIGN	EA	2
25	820750	FURNISH SINGLE SHEET ALUMINUM SIGN (0.063"-UNFRAMED)	SQFT	23
26	820840	ROADSIDE SIGN - ONE POST	EA	4
27	820841A	LED SOLAR POWERED FLASHING STOP SIGN SYSTEM	EA	2
28	820900	INSTALL ROADSIDE SIGN PANEL ON EXISTING POST	EA	2
29	839600A	ALTERNATIVE CRASH CUSHION SYSTEM	EA	4
30(F)	839741	CONCRETE BARRIER (TYPE 836)	LF	183
31(F)	839743A	CONCRETE BARRIER (TYPE 836B MODIFIED)	LF	24
32	840515	THERMOPLASTIC PAVEMENT MARKING	SQFT	250
33	840656	PAINT TRAFFIC STRIPE (2-COAT)	LF	3,420
34	999990	MOBILIZATION	LS	1
35		JOB HAZARD ANALYSIS AND SAFETY PLAN	LS	1
36		REMOVE AND INSTALL STORM DRAIN LINE	LS	1

Plans, specifications, and proposal forms (bid documents) for bidding this project can be obtained at the office of the Imperial County Department of Public Works; 155 South 11th Street, El Centro, CA 92243. A \$100.00 fee is required (no refund will be made). Mail service is available at an additional cost of \$15.00 per set of documents. Make checks payable to the County of Imperial Department of Public Works.

Alternately, the bid documents can be found on Imperial County Public Works website under “Projects Out to Bid” at [www.co.imperial.ca.us/PublicWorks/Index.htm](http://www.co.imperial.ca.us/PublicWorks/Index.htm).

Only those firms who have purchased the bid documents and the required trade journals will be directly provided any addendums that may be issued for this project prior to the bid opening date. Every attempt will be made to post addendums on the above mentioned Imperial County Public Works website as well.

This contract is subject to state contract nondiscrimination and compliance requirements pursuant to Government Code, Section 12990.

Inquiries or questions based on alleged patent ambiguity of the plans, specifications, or estimate must be communicated as a bidder inquiry prior to bid opening. Any such inquiries or questions, submitted after bid opening, will not be treated as a bid protest.

**DIVISION XIV**  
**DOCUMENTS TO BE EXECUTED BY BIDDER**

(Because some colored inks will not reproduce in copy machines, please use black ink to complete this proposal.)  
(DO NOT DETACH)

**PROPOSAL TO THE COUNTY OF IMPERIAL**

DEPARTMENT OF PUBLIC WORKS  
County Project No. 6222

NAME OF BIDDER \_\_\_\_\_

BUSINESS P.O. BOX \_\_\_\_\_

CITY, STATE, ZIP \_\_\_\_\_

BUSINESS STREET ADDRESS \_\_\_\_\_

*(Please include even if P.O. Box used)*

CITY, STATE, ZIP \_\_\_\_\_

TELEPHONE NO:      AREA CODE (      ) \_\_\_\_\_

FAX NO:              AREA CODE (      ) \_\_\_\_\_

CONTRACTOR LICENSE NO. \_\_\_\_\_

EMAIL ADDRESS \_\_\_\_\_

The work for which this proposal is submitted is for construction in conformance with the special provisions (including the payment of not less than the State general prevailing wage rates or Federal minimum wage rates), the project plans described below, including any addenda thereto, the contract annexed hereto, and also in conformance with the 2018 California Department of Transportation Standard Plans, Standard Specifications, and the Labor Surcharge and Equipment Rental Rates in effect on the date the work is accomplished.

The special provisions for the work to be done are dated March 28<sup>th</sup>, 2022 and are entitled:

**COUNTY OF IMPERIAL  
DEPARTMENT OF PUBLIC WORKS**

**NOTICE TO BIDDERS  
SPECIAL PROVISIONS  
PROPOSAL AND BID BOOK  
FOR**

**DOGWOOD ROAD BRIDGE REPLACEMENT OVER CENTRAL MAIN CANAL  
BR. NO. 58C-0226  
County of Imperial Project No. 6222**

The project plans for the work to be done were adopted: March 28<sup>th</sup>, 2022 and are entitled:

**DOGWOOD ROAD BRIDGE REPLACEMENT OVER CENTRAL MAIN CANAL**

**BR. NO. 58C-0226**

**County of Imperial Project No. 6222**

Bids are to be submitted for the entire work. The amount of the bid for comparison purposes will be the total of all items.

The bidder shall set forth for each unit basis item of work an item price and a total for the item, and for each lump sum item a total for the item, all in clearly legible figures in the respective spaces provided for this purpose. In the case of unit basis items the amount set forth under the "Total" column shall be the extension of the item price bid on the basis of the estimated quantity for the item.

In case of discrepancy between the unit price and the total set forth for a unit basis item, the item price shall prevail, provided in (a) or (b), as follows:

- (a) If the amount set forth as a unit price is unreadable or otherwise unclear, or is omitted, or is the same as the amount of the entry in the item total column, then the amount set forth in the item total column for the item shall prevail and shall be divided by the estimated quantity for the item and the price thus obtained shall be the unit price;
- (b) (Decimal Errors) If the product of the entered unit price and the estimated quantity is exactly off by a factor of ten, one hundred, etc., or one-tenth, or one-hundredth, etc. from the entered total, the discrepancy will be resolved by using the entered unit price or item total, whichever most closely approximates percentage-wise the unit price or item total in the County of Imperial's Final Estimate of cost.

If both the unit price and the item total are unreadable or otherwise unclear, or are omitted, the bid may be deemed irregular. Likewise if the item total for a lump sum item is unreadable or otherwise unclear, or is omitted, the bid may be deemed irregular unless the project being bid has only a single item and a clear, readable total bid is provided.

Symbols such as commas and dollar signs will be ignored and have no mathematical significance in establishing any unit price or item total or lump sums. Written unit prices, item totals and lump sums will be interpreted according to the number of digits and, if applicable, decimal placement. Cents symbols also have no significance in establishing any unit price or item total since all figures are assumed to be expressed in dollars and/or decimal fractions of a dollar. Bids on lump sum items shall be item totals only; if any unit price for a lump sum item is included in a bid and it differs from the item total, the items total shall prevail.

The foregoing provisions for the resolution of specific irregularities cannot be so comprehensive as to cover every omission, inconsistency, error or other irregularity which may occur in a bid. Any situation not specifically provided for will be determined in the discretion of the County of Imperial, and that discretion will be exercised in the manner deemed by the County of Imperial to best protect the public interest in the prompt and economical completion of the work. The decision of the County of Imperial respecting the amount of a bid, or the existence or treatment of an irregularity in a bid, shall be final.

If this proposal shall be accepted and the undersigned shall fail to enter into the contract and furnish the 2 bonds in the sums required by the State Contract Act, with surety satisfactory to the *County of Imperial*, within 8 days, not including Saturdays, Sundays and legal holidays, after the bidder has received notice from the *County of Imperial* that the contract has been awarded, the *County of Imperial* may, at its option, determine that the bidder has abandoned the contract, and thereupon this proposal and the acceptance thereof shall be null and void and the

forfeiture of the security accompanying this proposal shall operate and the same shall be the property of the *County of Imperial*.

The undersigned, as bidder, declares that the only persons or parties interested in this proposal as principals are those named herein; that this proposal is made without collusion with any other person, firm, or corporation; that he has carefully examined the location of the proposed work, the annexed proposed form of contract, and the plans therein referred to; and he proposes, and agrees if this proposal is accepted, that he will contract with the *County of Imperial*, in the form of the copy of the contract annexed hereto, to provide all necessary machinery, tools, apparatus and other means of construction, and to do all the work and furnish all the materials specified in the contract, in the manner and time therein prescribed, and according to the requirements of the Engineer as therein set forth, and that he will take in full payment therefore the following prices, to wit:

**BID ITEM LIST / 5-DAY CONSTRUCTION WORKDAY CALENDAR**

<b>Item No.</b>	<b>Item Code</b>	<b>ITEM DESCRIPTION</b>	<b>Unit of Measure</b>	<b>Estimated Quantity</b>	<b>ITEM PRICE</b>	<b>TOTAL</b>
1	050000A	LAND SURVERYING	LS	1		
2	070030	LEAD COMPLIANCE PLAN	LS	1		
3	120100 120900 128652	TEMPORARY TRAFFIC CONTROL	LS	1		
4	130100 130200 130300 130310 130320 130330	WATER POLLUTION CONTROL	LS	1		
5	170103	CLEARING AND GRUBBING (LS)	LS	1		
6	190101	ROADWAY EXCAVATION	CY	930		
7(F)	192003	STRUCTURE EXCAVATION (BRIDGE)	CY	42		
8(F)	193003	STRUCTURE BACKFILL (BRIDGE)	CY	36		
9(F)	193006	STRUCTURE BACKFILL (SLURRY CEMENT)	CY	375		
10	198010	IMPORTED BORROW (CY)	CY	1,270		
11	260203	CLASS 2 AGGREGATE BASE (CY)	CY	2,640		
12	390132A	ASPHALT CONCRETE PAVEMENT	TON	1,080		
13	398200	COLD PLANE ASPHALT CONCRETE PAVEMENT	SQYD	340		
14	490380	SHEET PILING	SQFT	12,590		
15	495124	FURNISH 30" CAST-IN-STEEL SHELL CONCRETE PILING	LF	785		
16	495125	DRIVE 30" CAST-IN-STEEL SHELL CONCRETE PILE	EA	12		
17(F)	510053	STRUCTURAL CONCRETE, BRIDGE	CY	75		
18(F)	510054	STRUCTURAL CONCRETE, BRIDGE (POLYMER FIBER)	CY	99		
19	519088	JOINT SEAL (MR 1")	LF	79		
20(F)	520102	BAR REINFORCING STEEL (BRIDGE)	LB	64,629		
21	550203A	ERECT PREFABRICATED STEEL BRIDGE	LS	1		
22	600114	BRIDGE REMOVAL (PORTION)	LS	1		
23(F)	750501	MISCELLANEOUS METAL (BRIDGE)	LB	2,046		
24	820610	RELOCATE ROADSIDE SIGN	EA	2		
25	820750	FURNISH SINGLE SHEET ALUMINUM SIGN (0.063"-UNFRAMED)	SQFT	23		
26	820840	ROADSIDE SIGN - ONE POST	EA	4		



<b>Item No.</b>	<b>Item Code</b>	<b>ITEM DESCRIPTION</b>	<b>Unit of Measure</b>	<b>Estimated Quantity</b>	<b>ITEM PRICE</b>	<b>TOTAL</b>
27	820841A	LED SOLAR POWERED FLASHING STOP SIGN SYSTEM	EA	2		
28	820900	INSTALL ROADSIDE SIGN PANEL ON EXISTING POST	EA	2		
29	839600A	ALTERNATIVE CRASH CUSHION SYSTEM	EA	4		
30(F)	839741	CONCRETE BARRIER (TYPE 836)	LF	183		
31(F)	839743A	CONCRETE BARRIER (TYPE 836B MODIFIED)	LF	24		
32	840515	THERMOPLASTIC PAVEMENT MARKING	SQFT	250		
33	840656	PAINT TRAFFIC STRIPE (2-COAT)	LF	3,420		
34	999990	MOBILIZATION	LS	1		
35		JOB HAZARD ANALYSIS AND SAFETY PLAN	LS	1		
36		REMOVE AND INSTALL STORM DRAIN LINE	LS	1		

**Total** \_\_\_\_\_

**BID ITEM LIST / 7-DAY CONSTRUCTION WORKDAY CALENDAR**

<b>Item No.</b>	<b>Item Code</b>	<b>ITEM DESCRIPTION</b>	<b>Unit of Measure</b>	<b>Estimated Quantity</b>	<b>ITEM PRICE</b>	<b>TOTAL</b>
1	050000A	LAND SURVERYING	LS	1		
2	070030	LEAD COMPLIANCE PLAN	LS	1		
3	120100 120900 128652	TEMPORARY TRAFFIC CONTROL	LS	1		
4	130100 130200 130300 130310 130320 130330	WATER POLLUTION CONTROL	LS	1		
5	170103	CLEARING AND GRUBBING (LS)	LS	1		
6	190101	ROADWAY EXCAVATION	CY	930		
7(F)	192003	STRUCTURE EXCAVATION (BRIDGE)	CY	42		
8(F)	193003	STRUCTURE BACKFILL (BRIDGE)	CY	36		
9(F)	193006	STRUCTURE BACKFILL (SLURRY CEMENT)	CY	375		
10	198010	IMPORTED BORROW (CY)	CY	1,270		
11	260203	CLASS 2 AGGREGATE BASE (CY)	CY	2,640		
12	390132A	ASPHALT CONCRETE PAVEMENT	TON	1,080		
13	398200	COLD PLANE ASPHALT CONCRETE PAVEMENT	SQYD	340		
14	490380	SHEET PILING	SQFT	12,590		
15	495124	FURNISH 30" CAST-IN-STEEL SHELL CONCRETE PILING	LF	785		
16	495125	DRIVE 30" CAST-IN-STEEL SHELL CONCRETE PILE	EA	12		
17(F)	510053	STRUCTURAL CONCRETE, BRIDGE	CY	75		
18(F)	510054	STRUCTURAL CONCRETE, BRIDGE (POLYMER FIBER)	CY	99		
19	519088	JOINT SEAL (MR 1")	LF	79		
20(F)	520102	BAR REINFORCING STEEL (BRIDGE)	LB	64,629		
21	550203A	ERECT PREFABRICATED STEEL BRIDGE	LS	1		
22	600114	BRIDGE REMOVAL (PORTION)	LS	1		
23(F)	750501	MISCELLANEOUS METAL (BRIDGE)	LB	2,046		
24	820610	RELOCATE ROADSIDE SIGN	EA	2		
25	820750	FURNISH SINGLE SHEET ALUMINUM SIGN (0.063"-UNFRAMED)	SQFT	23		
26	820840	ROADSIDE SIGN - ONE POST	EA	4		

<b>Item No.</b>	<b>Item Code</b>	<b>ITEM DESCRIPTION</b>	<b>Unit of Measure</b>	<b>Estimated Quantity</b>	<b>ITEM PRICE</b>	<b>TOTAL</b>
27	820841A	LED SOLAR POWERED FLASHING STOP SIGN SYSTEM	EA	2		
28	820900	INSTALL ROADSIDE SIGN PANEL ON EXISTING POST	EA	2		
29	839600A	ALTERNATIVE CRASH CUSHION SYSTEM	EA	4		
30(F)	839741	CONCRETE BARRIER (TYPE 836)	LF	183		
31(F)	839743A	CONCRETE BARRIER (TYPE 836B MODIFIED)	LF	24		
32	840515	THERMOPLASTIC PAVEMENT MARKING	SQFT	250		
33	840656	PAINT TRAFFIC STRIPE (2-COAT)	LF	3,420		
34	999990	MOBILIZATION	LS	1		
35		JOB HAZARD ANALYSIS AND SAFETY PLAN	LS	1		
36		REMOVE AND INSTALL STORM DRAIN LINE	LS	1		

**Total** \_\_\_\_\_

The names of all persons interested in the foregoing proposal as principals are as follows:

**IMPORTANT NOTICE:** *If bidder or other interested person is a corporation, state legal name of corporation, also names of the president, secretary, treasurer, and manager thereof; if a copartnership, state true name of firm, also names of all individual copartners composing firm; if bidder or other interested person is an individual, state first and last names in full.*

---

---

---

Licensed in conformance with an act providing for the registration of Contractors,

License No. \_\_\_\_\_ Classification(s) \_\_\_\_\_

**ADDENDA**

This Proposal is submitted with respect to the changes to the contract included in addenda number/s

\_\_\_\_\_  
*(Fill in addenda numbers if addenda have been received and insert, in this Proposal, any Engineer's Estimate sheets that were received as part of the addenda.)*

By my signature on this proposal I certify, under penalty of perjury under the laws of the State of California, that the foregoing questionnaire and statements of Public Contract Code Sections 10162, 10232 and 10285.1 are true and correct and that the bidder has complied with the requirements of Section 8103 of the Fair Employment and Housing Commission Regulations (Chapter 5, Title 2 of the California Administrative Code). By my signature on this proposal I further certify, under penalty of perjury under the laws of the State of California and the United States of America, that the Noncollusion Affidavit required by Title 23 United States Code, Section 112 and Public Contract Code Section 7106; and the Title 49 Code of Federal Regulations, Part 29 Debarment and Suspension Certification are true and correct.

Date: \_\_\_\_\_



---

---

---

Signature and Title of Bidder

Business Address \_\_\_\_\_

Place of Business \_\_\_\_\_

Place of Residence \_\_\_\_\_

## **PUBLIC CONTRACT CODE**

### **PUBLIC CONTRACT CODE SECTION 10285.1 STATEMENT**

In conformance with Public Contract Code Section 10285.1 (Chapter 376, Stats. 1985), the bidder hereby declares under penalty of perjury under the laws of the State of California that the bidder has \_\_\_ , has not \_\_\_ been convicted within the preceding three years of any offenses referred to in that section, including any charge of fraud, bribery, collusion, conspiracy, or any other act in violation of any state or Federal antitrust law in connection with the bidding upon, award of, or performance of, any public works contract, as defined in Public Contract Code Section 1101, with any public entity, as defined in Public Contract Code Section 1100, including the Regents of the University of California or the Trustees of the California State University. The term "bidder" is understood to include any partner, member, officer, director, responsible managing officer, or responsible managing employee thereof, as referred to in Section 10285.1.

Note: The bidder must place a checkmark after "has" or "has not" in one of the blank spaces provided. The above Statement is part of the Proposal. Signing this Proposal on the signature portion thereof shall also constitute signature of this Statement. Bidders are cautioned that making a false certification may subject the certifier to criminal prosecution.

---

### **PUBLIC CONTRACT CODE SECTION 10162 QUESTIONNAIRE**

In conformance with Public Contract Code Section 10162, the Bidder shall complete, under penalty of perjury, the following questionnaire:

Has the bidder, any officer of the bidder, or any employee of the bidder who has a proprietary interest in the bidder, ever been disqualified, removed, or otherwise prevented from bidding on, or completing a federal, state, or local government project because of a violation of law or a safety regulation?

Yes \_\_\_\_\_ No \_\_\_\_\_

If the answer is yes, explain the circumstances in the following space.

## **PUBLIC CONTRACT CODE 10232 STATEMENT**

In conformance with Public Contract Code Section 10232, the Contractor, hereby states under penalty of perjury, that no more than one final unappealable finding of contempt of court by a federal court has been issued against the Contractor within the immediately preceding two-year period because of the Contractor's failure to comply with an order of a federal court which orders the Contractor to comply with an order of the National Labor Relations Board.

Note: The above Statement and Questionnaire are part of the Proposal. Signing this Proposal on the signature portion thereof shall also constitute signature of this Statement and Questionnaire.  
Bidders are cautioned that making a false certification may subject the certifier to criminal prosecution.

---

**NONCOLLUSION AFFIDAVIT TO BE EXECUTED  
BY BIDDER AND SUBMITTED WITH BID**

(Title 23 United States Code Section 112 and  
Public Contract Code 7106)

**To the County of Imperial  
Department of Public Works**

In conformance with Title 23 United States Code Section 112 and Public Contract Code 7106 the bidder declares that the bid is not made in the interest of, or on behalf of any undisclosed person, partnership, company, association, organization, or corporation; that the bid is genuine and not collusive or sham; that the bidder has not directly or indirectly induced or solicited any other bidder to put in a false or sham bid, and has not directly or indirectly colluded, conspired, connived, or agreed with any bidder or anyone else to put in a sham bid, or that anyone shall refrain from bidding; that the bidder has not in any manner, directly or indirectly, sought by agreement, communication, or conference with anyone to fix the bid price of the bidder or any other bidder, or to fix any overhead, profit, or cost element of the bid price, or of that of any other bidder, or to secure any advantage against the public body awarding the contract of anyone interested in the proposed contract; that all statements contained in the bid are true; and, further, that the bidder has not, directly or indirectly, submitted his or her bid price or any breakdown thereof, or the contents therefor, or divulged information or data relative thereto, or paid, and will not pay, any fee to any corporation, partnership, company association, organization, bid depository, or to any member or agent thereof to effectuate a collusive or sham bid.

Note:           The above Non-collusion Affidavit is part of the Proposal. Signing this Proposal on the signature portion thereof shall also constitute signature of this Non-collusion Affidavit.  
Bidders are cautioned that making a false certification may subject the certifier to criminal prosecution.

The Bidder shall list the name and address, Contractor license number, and description of portion of work subcontracted of each subcontractor to whom the Bidder proposes to subcontract portions of the work, as required by the provisions of the Standard Specifications and of the special provisions.

**LIST OF SUBCONTRACTORS**

Business Name and Location	California Contractor License Number	Description of Portion of Work	Bid Items Numbers	Percentage of Bid Item Subcontracted

*(THE BIDDER'S EXECUTION ON THE SIGNATURE PORTION OF THIS PROPOSAL SHALL ALSO CONSTITUTE AN ENDORSEMENT AND EXECUTION OF THOSE CERTIFICATIONS WHICH ARE A PART OF THIS PROPOSAL)*



## EQUAL EMPLOYMENT OPPORTUNITY CERTIFICATION

The bidder \_\_\_\_\_, proposed subcontractor \_\_\_\_\_, hereby certifies that he has \_\_\_\_\_, has not \_\_\_\_\_, participated in a previous contract or subcontract subject to the equal opportunity clauses, as required by Executive Orders 10925, 11114, or 11246, and that, where required, he has filed with the Joint Reporting Committee, the Director of the Office of Federal Contract Compliance, a Federal Government contracting or administering agency, or the former President's Committee on Equal Employment Opportunity, all reports due under the applicable filing requirements.

**Note:** The above certification is required by the Equal Employment Opportunity Regulations of the Secretary of Labor (41 CFR 60-1.7(b) (1)), and must be submitted by bidders and proposed subcontractors only in connection with contracts and subcontracts which are subject to the equal opportunity clause. Contracts and subcontracts which are exempt from the equal opportunity clause are set forth in 41 CFR 60-1.5. (Generally only contracts or subcontracts of \$10,000 or under are exempt.)

Currently, Standard Form 100 (EEO-1) is the only report required by the Executive Orders or their implementing regulations.

Proposed prime contractors and subcontractors who have participated in a previous contract or subcontract subject to the Executive Orders and have not filed the required reports should note that 41 CFR 60-1.7(b) (1) prevents the award of contracts and subcontracts unless such contractor submits a report covering the delinquent period or such other period specified by the Federal Highway Administration or by the Director, Office of Federal Contract Compliance, U.S. Department of Labor.

---

Signature

## DEBARMENT AND SUSPENSION CERTIFICATION

TITLE 49, CODE OF FEDERAL REGULATIONS, PART 29

The bidder, under penalty of perjury, certifies that, except as noted below, he/she or any other person associated therewith in the capacity of owner, partner, director, officer, manager:

- is not currently under suspension, debarment, voluntary exclusion, or determination of ineligibility by any Federal agency;
- has not been suspended, debarred, voluntarily excluded or determined ineligible by any Federal agency within the past 3 years;
- does not have a proposed debarment pending; and
- has not been indicted, convicted, or had a civil judgment rendered against it by a court of competent jurisdiction in any matter involving fraud or official misconduct within the past 3 years.

If there are any exceptions to this certification, insert the exceptions in the following space.

Exceptions will not necessarily result in denial of award, but will be considered in determining bidder responsibility. For any exception noted above, indicate below to whom it applies, initiating agency, and dates of action.

Notes: Providing false information may result in criminal prosecution or administrative sanctions.  
The above certification is part of the Proposal. Signing this Proposal on the signature portion thereof shall also constitute signature of this Certification.

---



**INSTRUCTIONS FOR COMPLETION OF SF-LLL,  
DISCLOSURE OF LOBBYING ACTIVITIES**

This disclosure form shall be completed by the reporting entity, whether subawardee or prime Federal recipient, at the initiation or receipt of covered Federal action or a material change to previous filing pursuant to title 31 U.S.C. section 1352. The filing of a form is required for such payment or agreement to make payment to lobbying entity for influencing or attempting to influence an officer or employee of any agency, a Member of Congress an officer or employee of Congress or an employee of a Member of Congress in connection with a covered Federal action. Attach a continuation sheet for additional information if the space on the form is inadequate. Complete all items that apply for both the initial filing and material change report. Refer to the implementing guidance published by the Office of Management and Budget for additional information.

1. Identify the type of covered Federal action for which lobbying activity is and/or has been secured to influence, the outcome of a covered Federal action.
2. Identify the status of the covered Federal action.
3. Identify the appropriate classification of this report. If this is a follow-up report caused by a material change to the information previously reported, enter the year and quarter in which the change occurred. Enter the date of the last, previously submitted report by this reporting entity for this covered Federal action.
4. Enter the full name, address, city, state and zip code of the reporting entity. Include Congressional District if known. Check the appropriate classification of the reporting entity that designates if it is or expects to be a prime or subaward recipient. Identify the tier of the subawardee, e.g., the first subawardee of the prime is the first tier. Subawards include but are not limited to subcontracts, subgrants and contract awards under grants.
5. If the organization filing the report in Item 4 checks "Subawardee" then enter the full name, address, city, state and zip code of the prime Federal recipient. Include Congressional District, if known.
6. Enter the name of the Federal agency making the award or loan commitment. Include at least one organization level below agency name, if known. For example, Department of Transportation, United States Coast Guard.
7. Enter the Federal program name or description for the covered Federal action (item 1). If known, enter the full Catalog of Federal Domestic Assistance (CFDA) number for grants, cooperative agreements, loans and loan commitments.
8. Enter the most appropriate Federal identifying number available for the Federal action identification in item 1 (e.g., Request for Proposal (RFP) number, Invitation for Bid (IFB) number, grant announcement number, the contract grant, or loan award number, the application/proposal control number assigned by the Federal agency). Include prefixes, e.g., "RFP-DE-90-001."
9. For a covered Federal action where there has been an award or loan commitment by the Federal agency, enter the Federal amount of the award/loan commitments for the prime entity identified in item 4 or 5.
10. (a) Enter the full name, address, city, state and zip code of the lobbying entity engaged by the reporting entity identified in item 4 to influenced the covered Federal action.  
(b) Enter the full names of the individual(s) performing services and include full address if different from 10 (a). Enter Last Name, First Name and Middle Initial (MI).
11. Enter the amount of compensation paid or reasonably expected to be paid by the reporting entity (item 4) to the lobbying entity (item 10). Indicate whether the payment has been made (actual) or will be made (planned). Check all boxes that apply. If this is a material change report, enter the cumulative amount of payment made or planned to be made.
12. Check the appropriate box. Check all boxes that apply. If payment is made through an in-kind contribution, specify the nature and value of the in-kind payment.
13. Check the appropriate box. Check all boxes that apply. If other, specify nature.
14. Provide a specific and detailed description of the services that the lobbyist has performed or will be expected to perform and the date(s) of any services rendered. Include all preparatory and related activity not just time spent in actual contact with Federal officials. Identify the Federal officer(s) or employee(s) contacted or the officer(s) employee(s) or Member(s) of Congress that were contacted.
15. Check whether or not a continuation sheet(s) is attached.
16. The certifying official shall sign and date the form, print his/her name title and telephone number.

Public reporting burden for this collection of information is estimated to average 30 minutes per response, including time for reviewing instruction, searching existing data sources, gathering and maintaining the data needed, and completing and reviewing the collection of information. Send comments regarding the burden estimate or any other aspect of this collection of information, including suggestions for reducing this burden, to the Office of Management and Budget, Paperwork Reduction Project (0348-0046), Washington, D.C. 20503.

SF-LLL-Instructions Rev. 06-04-90(ENIDF)

**COUNTY OF IMPERIAL  
DEPARTMENT OF PUBLIC WORKS**

**Request for Additional Information from Bidder  
for the  
Dogwood Road Bridge Replacement Over  
Central Main Canal  
Bridge No. 58C-0226  
County of Imperial Project No. 6222**

**Please address the following and include responses as part of this bid proposal:**

1. Please provide the County with two proposed schedules (i.e. Project Gantt Chart Schedule) indicating how the project will be constructed. One schedule will be based on the 7-day construction workday calendar (including legal holidays) and the other schedule will be based on the 5-day construction workday calendar (i.e. no weekends and legal holidays).
2. How long would it take for your firm to procure and deliver steel foundation piles and sheet piles to the project site?
3. Provide a List of Bridge Projects your firm has completed in the last five (5) years.
4. Has your firm, team members, or subcontractors built Steel Bridges in the last 10 years? If so, please provide a list of projects.

## MINIMUM INSURANCE AMOUNTS

Construction contract (Agreement for Services) form and content is included.

### Insurance Minimum Amounts \*

<u>Insurance</u>	<u>Minimum Limit *</u>
Workers Compensation, Coverage A	Statutory
Employers Liability, Coverage B	\$1 million
Comprehensive General Liability (Including Contractual Liability):	
Bodily Injury	\$5 million per occurrence \$10 million aggregate
Property Damage	\$5 million per occurrence \$10 million aggregate
Comprehensive Automobile Liability (Owned, hired & non-owned vehicles)	
Bodily Injury	\$1 million per occurrence
Property Damage	\$1 million per occurrence

An endorsement covering any explosion collapse and underground exposures, "XCU", in the Commercial General Liability policy is required.

\*Minimums subject to additional review after bid opens.