

Sheet No. 22

DIST	COUNTY	ROUTE	SEC
11	IMP	1262	CR
			5-1862 (A)

GENERAL NOTES

SPECIFICATIONS
 DESIGN: AASHTO Dated 1961 With Subsequent Revisions As Supplemented By The Bridge Planning & Design Manual.
 LIVE LOADING: HS 20-44
 UNIT STRESSES
 REINFORCED CONCRETE: $f_s = 20000$ PSI., $N=10$
 $f_c = 1,200$ PSI., $\epsilon = 3000$ PSI.

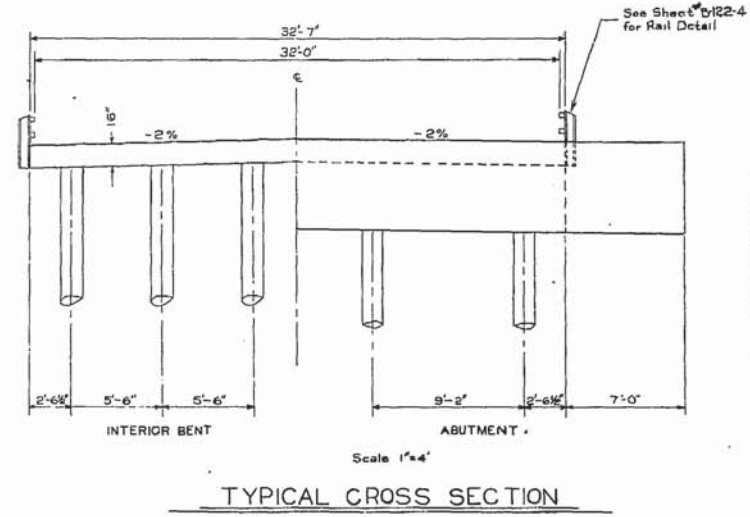
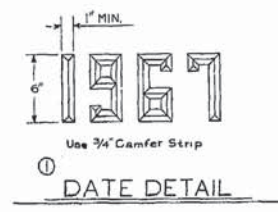
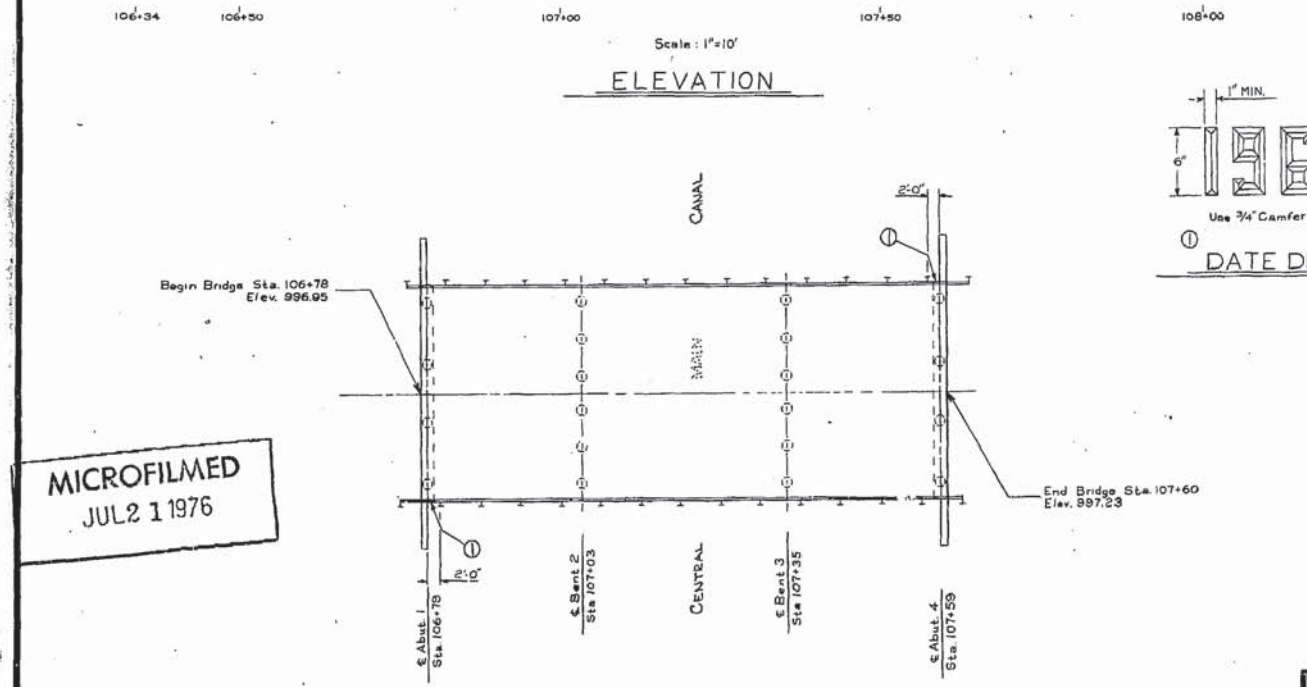
ROAD ENGINEER: *[Signature]*
 CIVIL ENGINE LICENSE NO. 10706
 BRIDGE ENGINEER: *[Signature]*
 CIVIL ENGINE LICENSE NO. 8434
 BRIDGE ENGINEER C.E. 5585

APPROVED: June 26, 1967

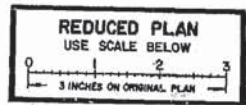
APPROXIMATE QUANTITIES

FURNISH CONCRETE PILINGS, 745 LIN. FT.
 DRIVE CONCRETE PILES, 20
 CLASS "A" CONCRETE (BRIDGE), 160 C.Y.
 BAR REINFORCING STEEL (BRIDGE), 30,000 Lb.
 METAL TUBE RAILING, 176 FT.
 STRUCTURE EXCAVATION, (BRIDGE) 90 C.Y.
 STRUCTURE BACKFILL, (BRIDGE) 30 C.Y.
 * Final By Quantities

	Abutments	Bents
Specified Tip Elev.	9650	9600
Estimated Tip Elev.	9600	9550



MICROFILMED
 JUL 2 1 1976



ROAD DEPARTMENT
 COUNTY OF IMPERIAL
 EL CENTRO, CALIF.

Reinforced Conc. Flat Slab
 Bridge On County Road Dog-
 wood Across
 Central Main Canal
 General Plan

APPROVED: June 26, 1967

11-119804

State Br. No 58C-42

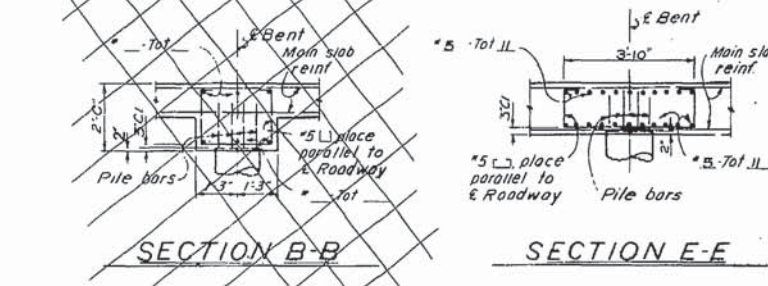
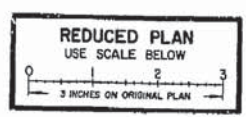
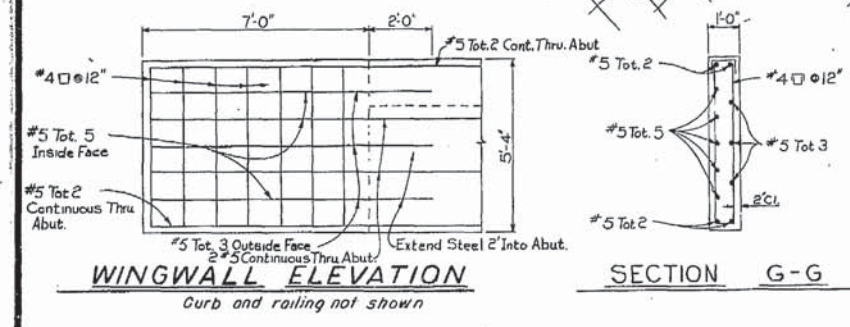
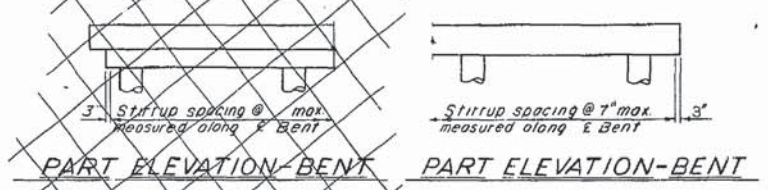
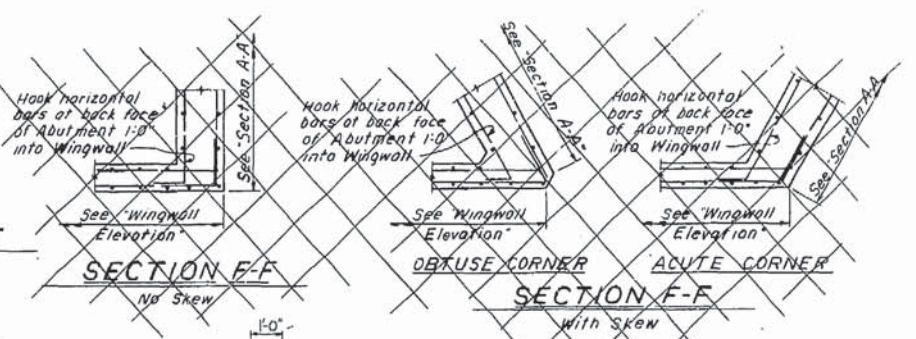
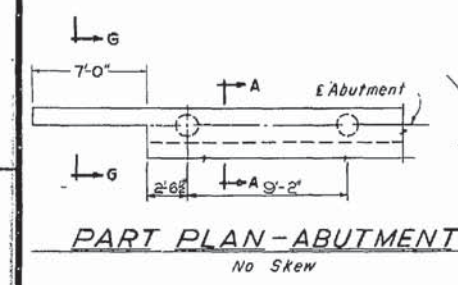
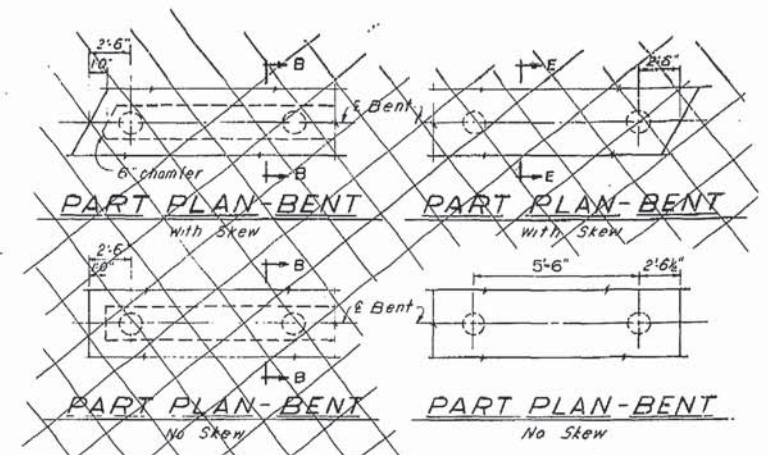
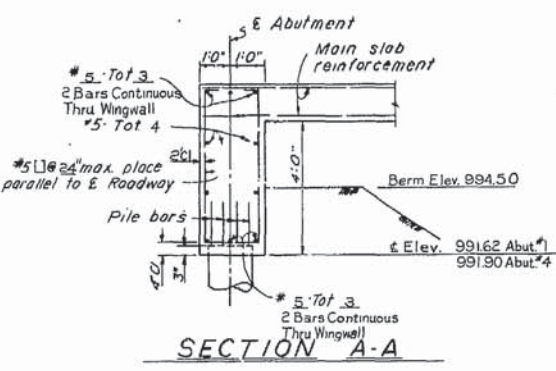
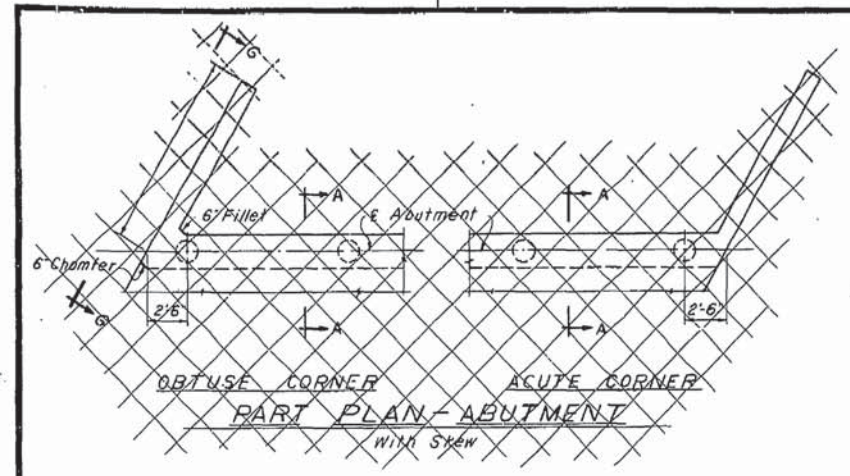
SHEET OF SHEETS B-122-1

AS BUILT PLANS
 Contract No. 11-119804
 Date Completed _____
 Document No. AC056351

I HEREBY CERTIFY THAT THIS IS A TRUE AND ACCURATE COPY OF THE ABOVE DOCUMENT TAKEN UNDER MY DIRECTION AND CONTROL ON THIS DATE IN SACRAMENTO, CALIFORNIA PURSUANT TO AUTHORIZATION BY THE DIRECTOR OF TRANSPORTATION.

DATE: 7/21/76 SIGNATURE: Dale Madawa TITLE: Microfilm Supervisor

DAS-55-78



DIST	COUNTY	ROUTE	SEC
11	IMP	1262	CR
		5-1262	(4)

APPROVED *[Signature]*
DATE June 26, 1962
58C-42

11-119804

COUNTY OF IMPERIAL
DEPARTMENT OF PUBLIC WORKS

Reinforced Conc. Flat Slab Bridge On County Road Dogwood Across The Central Main Canal

ABUTMENT AND BENT DETAILS

SCALE None DRAWING B-122-2

SHEET OF SHEETS B-122-2

MICROFILMED
JUL 2 1 1976

LIVE LOADING: HS 20-44 ONLY

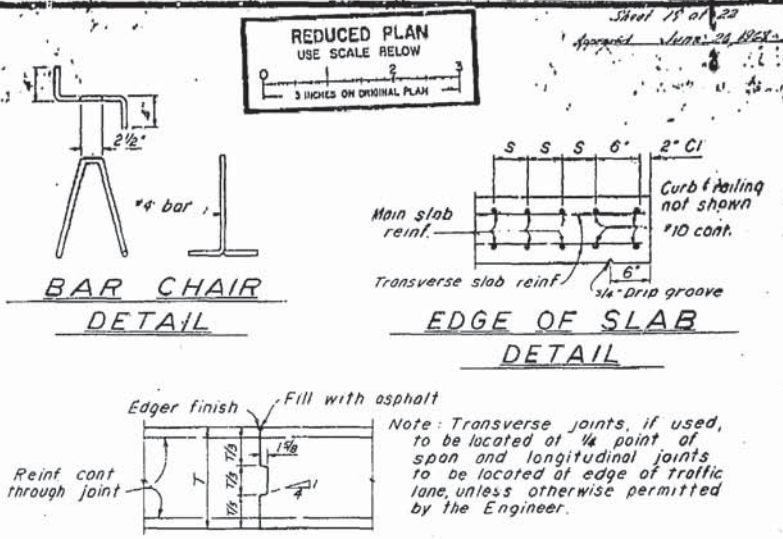
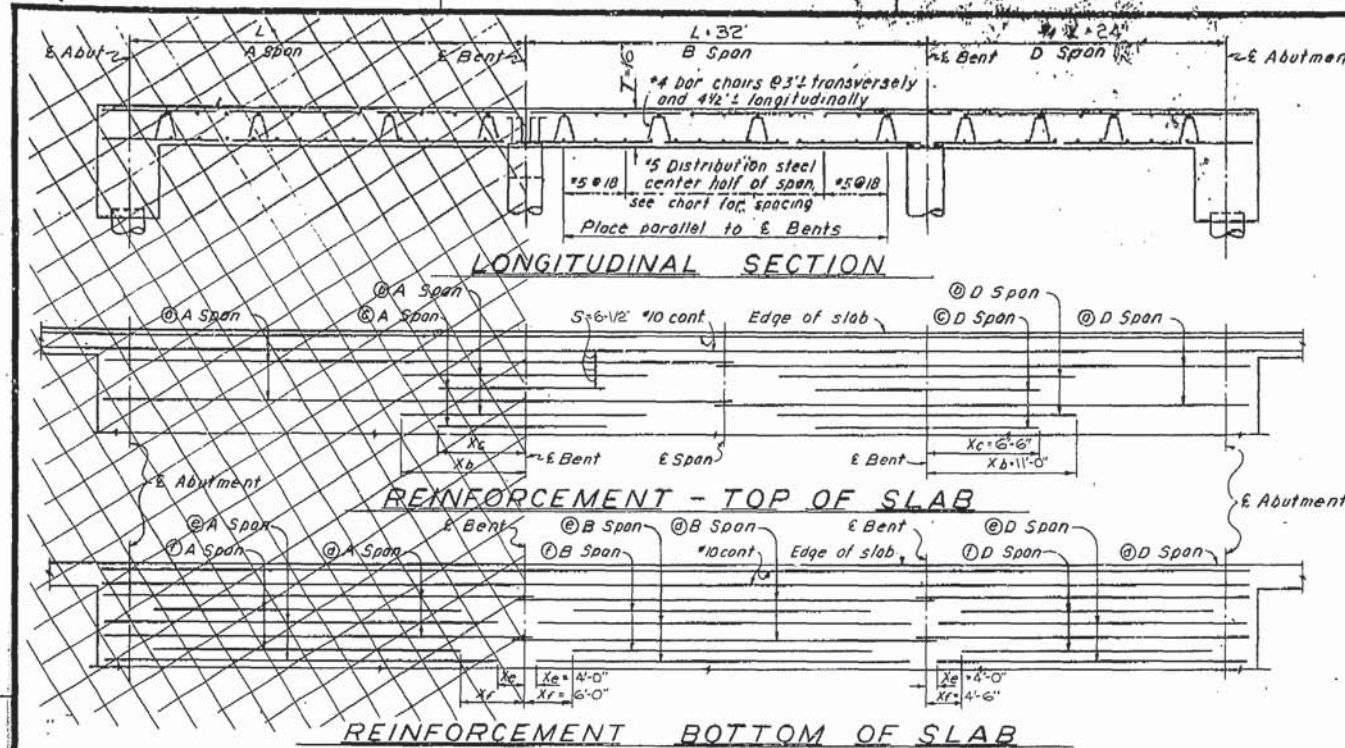
Structural Details
Checked by *[Signature]*
Revised *[Signature]*
Approved *[Signature]*

AS BUILT PLANS
Contract No. 11-119804
Date Completed _____
Document No. AC006351

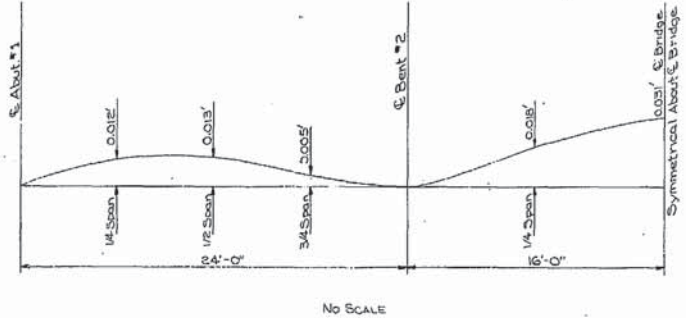
I HEREBY CERTIFY THAT THIS IS A TRUE AND ACCURATE COPY OF THE ABOVE DOCUMENT TAKEN UNDER MY DIRECTION AND CONTROL ON THIS DATE IN SACRAMENTO, CALIFORNIA PURSUANT TO AUTHORIZATION BY THE DIRECTOR OF TRANSPORTATION.

DATE 7/21/76 SIGNATURE *[Signature]* TITLE Microfilm Supervisor

DAS-55-70



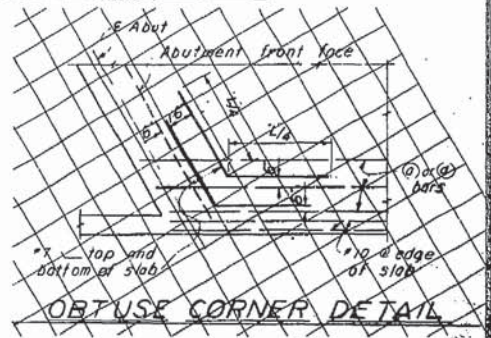
REINFORCEMENT		L- Length of Span 32'	
Type of Span	Size	A	D
Bottom of Slab Top of Slab	#6		
Length	#9	42-3"	
Length	#9	19-0"	
Xb	#11	11'-0"	
Length	#11	12'-6"	
Xc	#6	6'-6"	
Size	#8	47	
Length	#7	33-0"	24'-0"
Size	#7	46	
Length	#10	24'-0"	24'-0"
Xe	#10	4'-0"	4'-0"
Size	#10	10	10
Length	#10	25'-0"	19'-6"
Xf	#6	6'-0"	4'-6"
Dist. Steel Spacing	#13	13"	13"
T- Thickness of Slab		16"	
S- Bar Spacing		6-1/2"	
Clearance to main reinf.		2"	
Quantities per Conc. ft		42.7	33.3
ft of Hwy Width		3.45	2.25
Ultimate dead load deflection @ E Span		0.03	0.01



MICROFILMED
 JUL 2 1976

DIST	COUNTY	ROUTE	SEC
11	IMP	1262	CR
		S-1262	(4)

APPROVED June 26 1962
 BRIDGE ENGINEER



11-119804

DEPT. OF PUBLIC WORKS
 COUNTY OF IMPERIAL
 EL CENTRO, CALIF.

Reinforced Conc. Flat Slab Bridge
 On County Road Logwood Across The
 Central Main Canal

SLAB DETAILS - 3 SPANS

DRAWING B-122-3

LIVE LOADING: HS 20-44 ONLY

58C-42

SHEET OF SHEETS

AS BUILT PLANS
 Contract No. 11-119804
 Date Completed _____
 Document No. A0006351

I HEREBY CERTIFY THAT THIS IS A TRUE AND ACCURATE COPY OF THE ABOVE DOCUMENT TAKEN UNDER MY DIRECTION AND CONTROL ON THIS DATE IN SACRAMENTO, CALIFORNIA PURSUANT TO AUTHORIZATION BY THE DIRECTOR OF TRANSPORTATION.

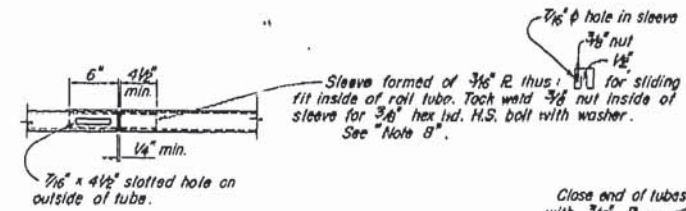
DATE 7/21/76 SIGNATURE Dale Madawane TITLE Microfilm Supervisor

Sheet 20 of 24

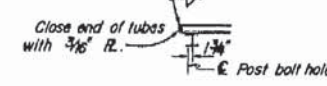
DIST	COUNTY	ROUTE	SEC
11	IMP	1262	CR
		5-1262	4

Wm. M. ...
 CIVIL ENGINEER LICENSE NO. 10704
 ROAD COMMISSIONER
 CIVIL ENGINEER LICENSE NO. 8434
 BRIDGE ENGR. C. E. 5583
 APPROVED *[Signature]* 1062

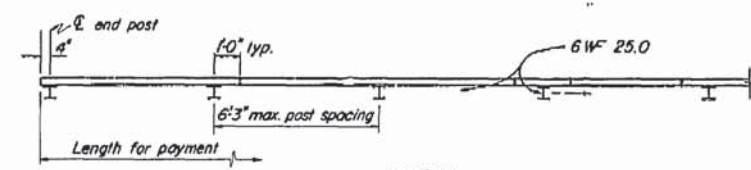
REDUCED PLAN
USE SCALE BELOW
3 INCHES ON ORIGINAL PLAN



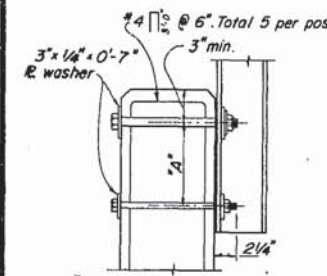
DETAIL A - TUBE SPLICE



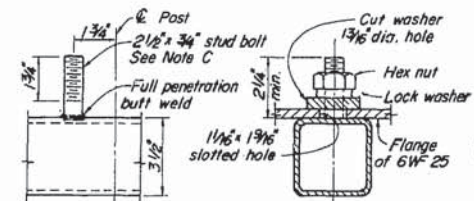
PLAN



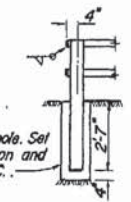
PLAN



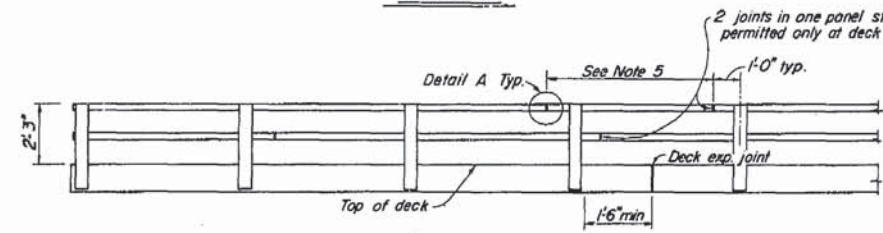
SECTION
RAIL POST ON WALL



DETAIL B - STUD BOLT



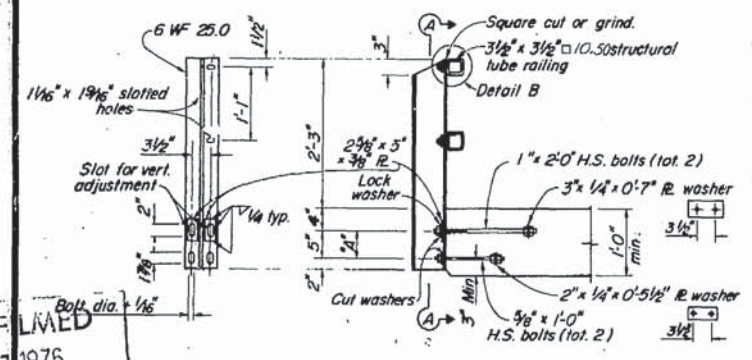
ELEVATION
POST ON SHOULDER



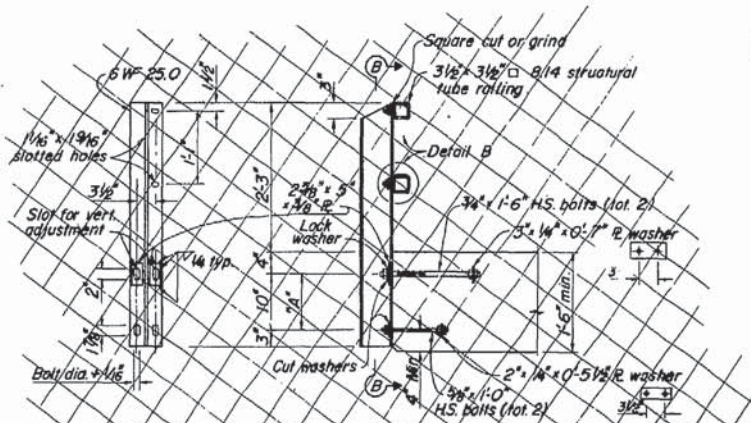
RAIL ELEVATION

NOTES:

- Materials:
- Steel tubing and structural steel shall conform to ASTM Designation A-36.
 - Anchor bolts shall be high strength conforming to ASTM Designation A 325 (Galv).
 - ASTM A 108 stud bolts with H.S. hex nuts. Torque to 175 ft. lbs.
- Fabrication:
- Posts shall be vertical.
 - Tubing shall be bent to fit horizontal curve when curve radius is less than 950'.
 - Tubing shall be parallel to vertical alignment.
 - Contractor to provide metal shims to align posts.
 - Tubing shall be continuous over not less than 2 intermediate posts, with a minimum length of 2 panels except as noted.
 - Galvanize rail assembly after fabrication.
 - Space posts to provide 1'-6" min. clear between expansion joints and E of post.
 - Rail joints in top and bottom tubes at deck expansion joints shall provide allowance for movement equal to width of deck joint with corresponding increase in length of sleeve and slotted hole in tube.
 - Railing on bridge wingwalls to be placed after walls are backfilled.
 - All high strength bolts to have hex nuts.
 - Anchor bolt nuts shall be wrench tight.
 - Use 1'-2" long anchor bolts in 1'-2" wide curbs.



SECTION A-A RAIL POST DETAILS - THIN SLAB



SECTION B-B RAIL POST DETAILS - THICK SLAB

MICROFILMED
JUL 2 1976

20

58C-42

11-119804

7/66

DEPT. OF PUBLIC WORKS
COUNTY OF IMPERIAL
EL CENTRO, CALIF.

Reinforced Conc. Flat Slab Bridge On County Road Dogwood Across The Central Main Canal

METAL TUBE BRIDGE RAILING TYPE 15

DESIGN NO. B-122-4

SHEET OF SHEETS

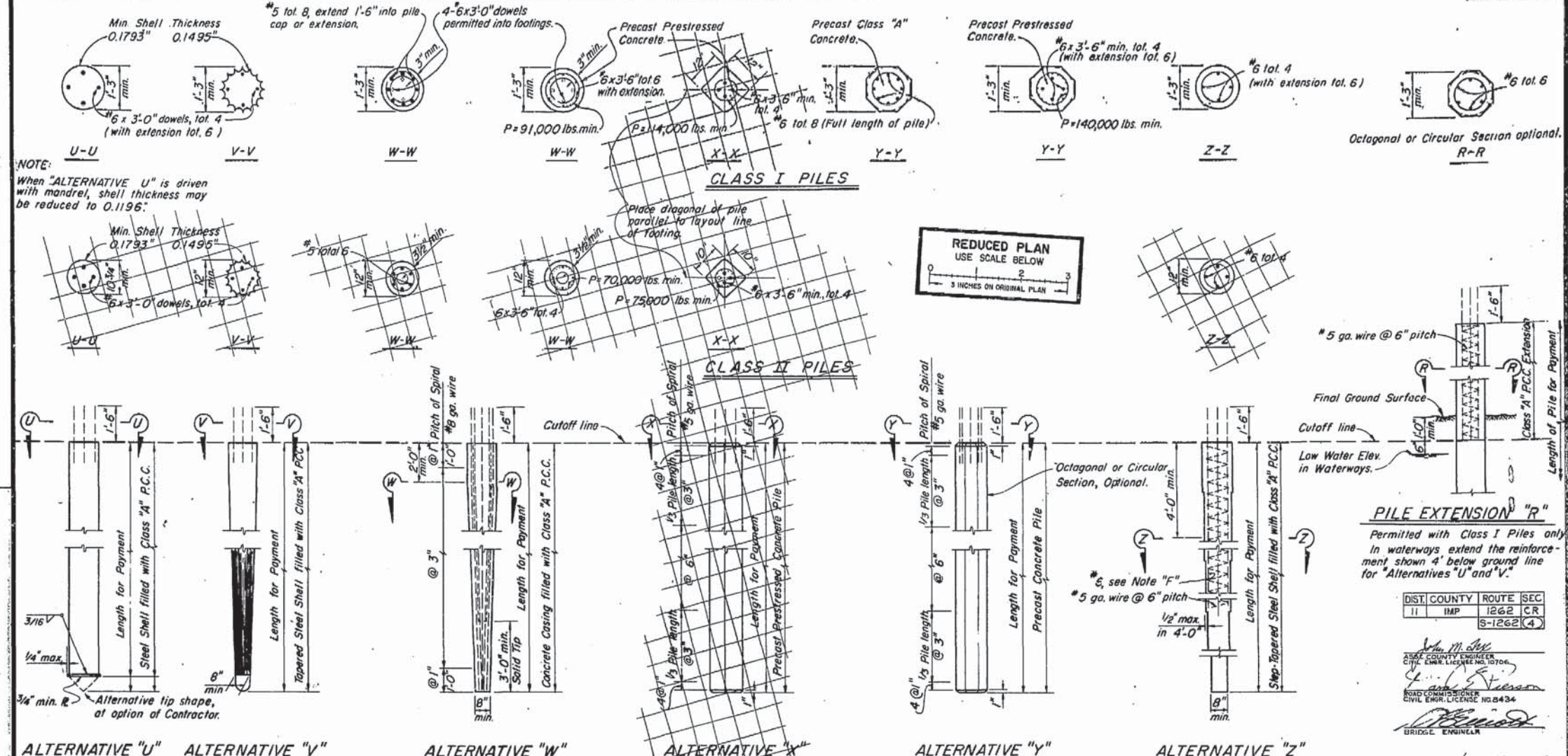
B-122-4

AS BUILT PLANS
Contract No. 11-119804
Date Completed _____
Document No. A0006351

I HEREBY CERTIFY THAT THIS IS A TRUE AND ACCURATE COPY OF THE ABOVE DOCUMENT TAKEN UNDER MY DIRECTION AND CONTROL ON THIS DATE IN SACRAMENTO, CALIFORNIA PURSUANT TO AUTHORIZATION BY THE DIRECTOR OF TRANSPORTATION.

DATE 7/21/76 SIGNATURE Dale Meadows TITLE Microfilm Supervisor

DAS-66-78



NOTE:
When "ALTERNATIVE U" is driven with mandrel, shell thickness may be reduced to 0.1196"

REDUCED PLAN
USE SCALE BELOW
0 1 2 3
3 INCHES ON ORIGINAL PLAN

PILE EXTENSION "R"
Permitted with Class I Piles only in waterways, extend the reinforcement shown 4' below ground line for "Alternatives U and V."

DIST.	COUNTY	ROUTE	SEC.
11	IMP	1262	CR 5-1262(4)

John M. Sullivan
COUNTY ENGINEER
CIVIL ENGINE LICENSE NO. 10706
Carl S. Peterson
ROAD COMMISSIONER
CIVIL ENGINE LICENSE NO. 8434
Richard
BRIDGE ENGINEER

APPROVED June 26, 1967

ALTERNATIVE "U"

ALTERNATIVE "V"

ALTERNATIVE "W"

ALTERNATIVE "X"

ALTERNATIVE "Y"

ALTERNATIVE "Z"

PILE NOTES:

Alternatives "W" and "Y" may be driven full length or may be extended. All exposed piles or pile extensions shall be consistent in cross-section throughout the project.

PRECAST PRESTRESSED PILES:

P = Prestressing Force (After losses)
Concrete Stress: f_c a 28 days = 6,000 p.s.i. (Alternative "X")
4,500 p.s.i. (Alternative "Y")
5,000 p.s.i. (Alternative "W")

Alternative "X" may not extend above ground line nor be used with pile extension "R".

NOTE F:

In Alternative "Z" the No. 6 bars shall extend a minimum of 12' below the lowest of the following:

1. Bottom of footing.
2. Top of final ground surface.
3. Top of original ground surface when piles are driven through fills.

Unless indicated to the contrary all piles shall be Class I piles. Class I piles may be substituted for Class II piles.

A 10" minimum diameter pipe extension (thickness = 0.1793" min.) may be used at the tip of Alternatives "V" or "Z" when taper is 30' or more in length.

All dowels or bars extending into slab or footing having a depth less than 2'-0" shall be hooked.

MICROFILMED
JUL 21 1976

7/65 DPT. OF PUBLIC WORKS COUNTY OF IMPERIAL EL CENTRO, CALIF. XS-10-17
Reinforced Conc. Flat Slab Bridge On County Road Dogwood Across The Central Main Canal
CONCRETE PILE DETAILS
DRAWING NO. B-122-5
B-122-5

58C-42
DESIGN LOADING = 32 TONS

SHEET OF SHEETS

AS BUILT PLANS
Contract No. 11-119804
Date Completed _____
Document No. ADD6351

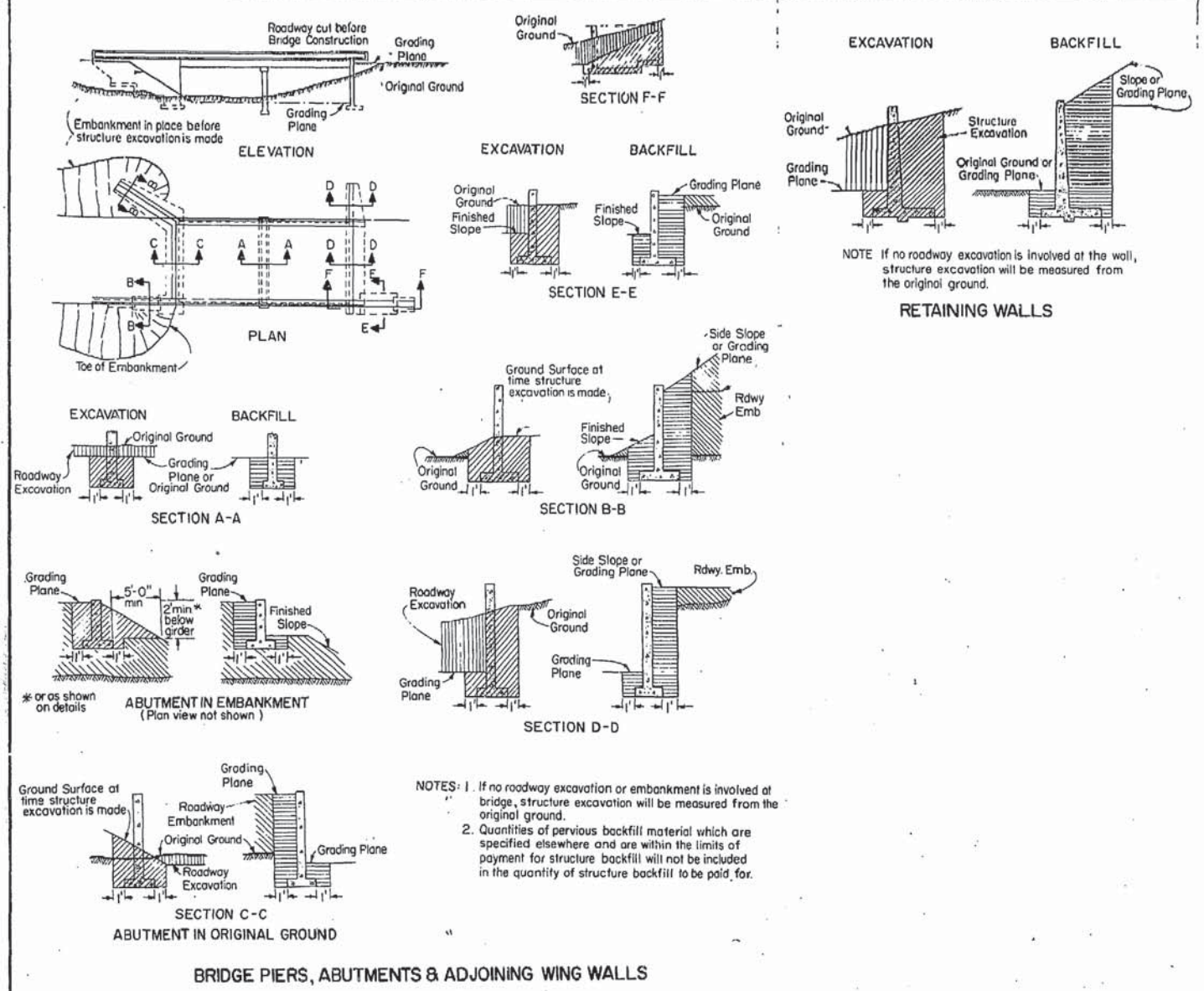
I HEREBY CERTIFY THAT THIS IS A TRUE AND ACCURATE COPY OF THE ABOVE DOCUMENT TAKEN UNDER MY DIRECTION AND CONTROL ON THIS DATE IN SACRAMENTO, CALIFORNIA PURSUANT TO AUTHORIZATION BY THE DIRECTOR OF TRANSPORTATION.

DATE 7/21/76 SIGNATURE Dale Meadows TITLE Microfilm Supervisor
DA8-95-78

Sheet 22 of 22

DIST.	COUNTY	ROUTE	SEC.
11	IMR	1262	CR
		B-122-6	(4)

J. M. [Signature]
 CIVIL ENGR. LICENSE NO. 10706
 ROAD COMMISSIONER
 CIVIL ENGR. LICENSE NO. 8434
 BRIDGE ENGINEER
 APPROVED June 26, 1962



REDUCED PLAN
USE SCALE BELOW

0 1 2 3
3 INCHES ON ORIGINAL PLAN

NOTE: If no roadway excavation is involved at the wall, structure excavation will be measured from the original ground.

NOTES: 1. If no roadway excavation or embankment is involved at bridge, structure excavation will be measured from the original ground.
2. Quantities of pervious backfill material which are specified elsewhere and are within the limits of payment for structure backfill will not be included in the quantity of structure backfill to be paid for.

MICROFILMED
JUL 2 1 1976

11-119804

58C-42

DEPT. OF PUBLIC WORKS
COUNTY OF IMPERIAL

Reinforced Conc. Flat Slab Bridge On County Road Dogwood Across The Central Main Canal

LIMITS OF PAYMENT FOR EXCAVATION AND BACKFILL BRIDGES

B-122-6

SHEET OF SHEETS B-122-6

AS BUILT PLANS
 Contract No. 11-119804
 Date Completed _____
 Document No. 10086351

I HEREBY CERTIFY THAT THIS IS A TRUE AND ACCURATE COPY OF THE ABOVE DOCUMENT TAKEN UNDER MY DIRECTION AND CONTROL ON THIS DATE IN SACRAMENTO, CALIFORNIA PURSUANT TO AUTHORIZATION BY THE DIRECTOR OF TRANSPORTATION.

DATE 7/21/76 SIGNATURE Dale Meadows TITLE Microfilm Supervisor

DAS-58-78